
Thompson Sampling Efficiently Learns to Control Diffusion Processes

Mohamad Kazem Shirani Faradonbeh

Department of Statistics
University of Georgia
Athens, GA 30602
mohamadksf@uga.edu

Mohamad Sadegh Shirani Faradonbeh

Graduate School of Business
Stanford University
Stanford, CA, 94305
sshirani@stanford.edu

Mohsen Bayati

Graduate School of Business
Stanford University
Stanford, CA, 94305
bayati@stanford.edu

Abstract

Diffusion processes that evolve according to linear stochastic differential equations are an important family of continuous-time dynamic decision-making models. Optimal policies are well-studied for them, under full certainty about the drift matrices. However, little is known about data-driven control of diffusion processes with uncertain drift matrices as conventional discrete-time analysis techniques are not applicable. In addition, while the task can be viewed as a reinforcement learning problem involving exploration and exploitation trade-off, ensuring system stability is a fundamental component of designing optimal policies. We establish that the popular Thompson sampling algorithm learns optimal actions fast, incurring only a square-root of time regret, and also stabilizes the system in a short time period. To the best of our knowledge, this is the first such result for Thompson sampling in a diffusion process control problem. We validate our theoretical results through empirical simulations with real matrices. Moreover, we observe that Thompson sampling significantly improves (worst-case) regret, compared to the state-of-the-art algorithms, suggesting Thompson sampling explores in a more guarded fashion. Our theoretical analysis involves characterization of a certain *optimality manifold* that ties the local geometry of the drift parameters to the optimal control of the diffusion process. We expect this technique to be of broader interest.

1 Introduction

One of the most natural reinforcement learning (RL) algorithms for controlling a diffusion process with unknown parameters is based on Thompson sampling (TS) [1]: a Bayesian posterior for the model is calculated based on its time evolution, and a control policy is then designed by treating a sampled model from the posterior as the truth. Despite its simplicity, guaranteeing efficiency and whether sampling the actions from the posterior could lead to unbounded future trajectories is unknown. In fact, the only known such theoretical result for control of a diffusion process is for an epsilon-greedy type policy that randomize the control actions at a certain rate [2].

In this work, we consider a p dimensional state signal $\{\mathbf{x}_t\}_{t \geq 0}$ that obeys the (Ito) stochastic differential equation (SDE)

$$d\mathbf{x}_t = (A_0\mathbf{x}_t + B_0\mathbf{u}_t) dt + d\mathbb{W}_t, \quad (1)$$

where the *drift matrices* A_0 and B_0 are unknown, $\mathbf{u}_t \in \mathbb{R}^q$ is the control action at any time $t \geq 0$, and it is designed based on values of \mathbf{x}_s for $s \in [0, t]$. The matrix $B_0 \in \mathbb{R}^{p \times q}$ models the influence of the control action on the state evolution over time, while $A_0 \in \mathbb{R}^{p \times p}$ is the (open-loop) transition matrix reflecting interactions between the coordinates of the state vector \mathbf{x}_t . The diffusion term in (1) consists of a non-standard Wiener process \mathbb{W}_t that will be defined in the next section. The goal is to study efficient RL policies that can design \mathbf{u}_t to minimize a quadratic cost function, defined in the next section, subject to uncertainties around A_0 and B_0 .

At a first glance, this problem is similar to most RL problems since the optimal policy must balance between the two objectives of learning the unknown matrices A_0 and B_0 (exploration) and optimally selecting the control signals \mathbf{u}_t to minimize the cost (exploitation). However, unlike most RL problems that have finite or bounded-support state space, ensuring *stability*, that \mathbf{x}_t stays bounded, is a crucial part of designing optimal policies. For example, in the discrete-time version of the problem, robust exploration is used to protect against unpredictably unstable trajectories [3–6].

Related literature. The existing literature studies efficiency of TS for learning optimal decisions in finite action spaces [7–12]. In this stream of research, it is shown that, over time, the posterior distribution concentrates around low-cost actions [13–15]. TS is also studied in further discrete-time settings with the environment represented by parameters that belong to a continuum, and Bayesian and frequentist regret bounds are shown for linear-quadratic regulators [16–31]. However, effectiveness of TS in highly noisy environments that are modeled by diffusion processes remains unexplored to date, due to technical challenges that will be described below.

For continuous-time linear time invariant dynamical systems, infinite-time consistency results are shown under a variety of technical assumptions, followed by alternating policies that cause (small) linear regrets [32–36]. From a computational viewpoint, pure exploration algorithms for computing optimal policies based on multiple trajectories of the state and action data are studied as well [37–39], for which a useful survey is available [40]. However, papers that study exploration versus exploitation and provide non-asymptotic estimation rates or regret bounds are limited to a few recent work about offline RL [41–43], with the exception of Randomized-Estimates policies [2] that TS outperforms them, as will be illustrated at the end of this paper.

Contributions. This work, first establishes that TS learns to stabilize the diffusion process (1). Specifically, in Theorem 1 of Section 3, we provide the first theoretical stabilization guarantee for diffusion processes, showing that the probability of preventing the state process from growing unbounded grows to 1, at an exponential rate that depends on square-root of the time length devoted to stabilization. As mentioned above, for RL problems with finite state spaces, the process is by definition stabilized, regardless of the policy. However, for the Euclidean state space of \mathbf{x}_t in (1), stabilization is necessary to ensure that the state and the cost do not grow unbounded.

Then, efficiency of TS in balancing exploration versus exploitation for minimizing a cost function that has a quadratic form of both the state and the control action is shown. Indeed, we establish in Theorem 2 of Section 4 that the regret TS incurs, grows as the *square-root of time*, while the squared estimation error decays with the same rate. It is also shown that both the above quantities grow quadratically with the dimension. To the authors’ knowledge, the presented results are the first theoretical analyses of TS for learning to control diffusion processes.

Additionally, through extensive simulations we illustrate that TS enjoys smaller average regret and substantially lower worst-case regret than the existing policies [2], thanks to its informed exploration.

It is important to highlight that theoretical analysis of RL policies for diffusion processes is highly non-trivial. Specifically, the conventional discrete-time RL technical tools are not applicable, due to uncountable cardinality of the random variables involved in a diffusion process, the unavoidable dependence between them, and the high level of processing and estimation noise. To address these, we make four main contributions. First, non-asymptotic and uniform upper bounds for continuous-time martingales and for Ito integrals are required to quantify the estimation accuracy. For that purpose, we establish concentration inequalities and show sub-exponential tail bounds for *double stochastic integrals*. Second, one needs sharp bounds for the impact of estimation errors on eigenvalues of certain non-linear matrices of the drift parameters that determine actions taken by TS policy. To tackle that, we perform a novel and tight *eigenvalue perturbation-analysis* based on the approximation error, dimension, and spectrum of the matrices. We also establish *Lipschitz continuity* of the control policy

with respect to the drift matrices, by developing new techniques based on matrix-valued curves. Third, to capture evaluation of both immediate and long-term effects of sub-optimal actions, we employ *Ito calculus* to bound the stochastic regret and specify effects of all problem parameters. Finally, to study learning from data trajectories that the condition number of their information matrix grows unbounded, we develop stochastic inequalities for *self-normalized continuous-time martingales*, and *spectral analysis* of non-linear functions of random matrices.

Organization. The organization of the subsequent sections is as follows. We formulate the problem in Section 2, while Algorithm 1 that utilizes TS for learning to stabilize the process and its high-probability performance guarantee are presented in Section 3. Then, in Section 4, TS is considered for learning to minimize a quadratic cost function, and the rates of estimation and regret are established. Next, theoretical analysis are provided in Section 5, followed by real-world numerical results of Section 6. Detailed proofs, auxiliary lemmas, and additional simulations are provided in a longer version of the paper [54].

Notation. The smallest (the largest) eigenvalue of matrix M , in magnitude, is denoted by $\underline{\lambda}(M)$ ($\bar{\lambda}(M)$). For a vector a , $\|a\|$ is the ℓ_2 norm, and for a matrix M , $\|M\|$ is the operator norm that is the supremum of $\|Ma\|$ for a on the unit sphere. $\mathcal{N}(\mu, \Sigma)$ is Gaussian distribution with mean μ and covariance Σ . If μ is a matrix (instead of vector), then $\mathcal{N}(\mu, \Sigma)$ denotes a distribution on matrices of the same dimension as μ , such that all columns are independent and share the covariance matrix Σ . In this paper, transition matrices $A \in \mathbb{R}^{p \times p}$ together with input matrices $B \in \mathbb{R}^{p \times q}$ are jointly denoted by the $(p+q) \times p$ parameter matrix $\theta = [A, B]^\top$. We employ \vee (\wedge) for maximum (minimum). Finally, $a \lesssim b$ expresses that $a \leq \alpha_0 b$, for some fixed constant α_0 .

2 Problem Statement

We study the problem of designing provably efficient reinforcement learning policies for minimizing a quadratic cost function in an uncertain linear diffusion process. To proceed, fix the complete probability space $(\Omega, \{\mathcal{F}_t\}_{t \geq 0}, \mathbb{P})$, where Ω is the sample space, $\{\mathcal{F}_t\}_{t \geq 0}$ is a continuous-time filtration (i.e., increasing sigma-fields), and \mathbb{P} is the probability measure defined on \mathcal{F}_∞ .

The state comprises the diffusion process \mathbf{x}_t in (1), where $\theta_0 = [A_0, B_0]^\top \in \mathbb{R}^{(p+q) \times p}$ is the unknown drift parameter. The diffusion term in (1) follows infinitesimal variations of the p dimensional Wiener process $\{\mathbb{W}_t\}_{t \geq 0}$. That is, $\{\mathbb{W}_t\}_{t \geq 0}$ is a multivariate Gaussian process with independent increments and with the stationary covariance matrix $\Sigma_{\mathbb{W}}$, such that for all $0 \leq s_1 \leq s_2 \leq t_1 \leq t_2$,

$$\begin{bmatrix} \mathbb{W}_{t_2} - \mathbb{W}_{t_1} \\ \mathbb{W}_{s_2} - \mathbb{W}_{s_1} \end{bmatrix} \sim \mathcal{N} \left(\begin{bmatrix} 0_p \\ 0_p \end{bmatrix}, \begin{bmatrix} (t_2 - t_1)\Sigma_{\mathbb{W}} & 0_{p \times p} \\ 0_{p \times p} & (s_2 - s_1)\Sigma_{\mathbb{W}} \end{bmatrix} \right). \quad (2)$$

Existence, construction, continuity, and non-differentiability of Wiener processes are well-known [44]. It is standard to assume that $\Sigma_{\mathbb{W}}$ is positive definite, which is a common condition in learning-based control [40, 41, 2, 42] to ensure accurate estimation over time.

The RL policy designs the action $\{\mathbf{u}_t\}_{t \geq 0}$, based on the observed system state by the time, as well as the previously applied actions, to minimize the long-run average cost

$$\limsup_{T \rightarrow \infty} \frac{1}{T} \int_0^T [\mathbf{x}_t^\top, \mathbf{u}_t^\top] Q \begin{bmatrix} \mathbf{x}_t \\ \mathbf{u}_t \end{bmatrix} dt, \quad \text{for } Q = \begin{bmatrix} Q_x & Q_{xu} \\ Q_{xu}^\top & Q_u \end{bmatrix}. \quad (3)$$

Above, the cost is determined by the positive definite matrix Q , where $Q_x \in \mathbb{R}^{p \times p}$, $Q_u \in \mathbb{R}^{q \times q}$, $Q_{xu} \in \mathbb{R}^{p \times q}$. In fact, Q determines the weights of different coordinates of $\mathbf{x}_t, \mathbf{u}_t$ in the cost function, so that the policy aims to make the states small, by deploying small actions. The cost matrix Q is assumed known to the policy. Formally, the problem is to minimize (3) by the policy

$$\mathbf{u}_t = \hat{\pi} \left(Q, \{\mathbf{x}_s\}_{0 \leq s \leq t}, \{\mathbf{u}_s\}_{0 \leq s < t} \right). \quad (4)$$

Without loss of generality, and for the ease of presentation, we follow the canonical formulation that sets $Q_{xu} = 0$; one can simply convert the case $Q_{xu} \neq 0$ to the canonical form, by employing a rotation to $\mathbf{x}_t, \mathbf{u}_t$ [45–48]. It is well-known that if, hypothetically, the truth θ_0 was known, an optimal

policy π_{opt} could be explicitly found by solving the continuous-time algebraic Riccati equation. That is, for a generic drift matrix $\theta = [A, B]^\top$, finding the symmetric $p \times p$ matrix $P(\theta)$ that satisfies

$$A^\top P(\theta) + P(\theta) A - P(\theta) B Q_u^{-1} B^\top P(\theta) + Q_x = 0. \quad (5)$$

This means, for the true parameter $\theta_0 = [A_0, B_0]^\top$, we can let $P(\theta_0)$ solve the above equation, and define the policy

$$\pi_{\text{opt}} : \quad u_t = -Q_u^{-1} B_0^\top P(\theta_0) x_t, \quad \forall t \geq 0. \quad (6)$$

It is known that the linear time-invariant policy π_{opt} minimizes the average cost in (3) [45–48]. This optimal policy also stabilizes the system such that under π_{opt} , the diffusion process x_t does not grow unbounded with time. Below, we define stabilizability and elaborate these properties.

Definition 1 *The process in (1) is stabilizable, if all eigenvalues of $\bar{A} = A_0 + B_0 K$ have negative real-parts, for a matrix K . Such K, \bar{A} are called a stabilizer and the stable closed-loop matrix.*

We assume that the process (1) with the drift parameter θ_0 is stabilizable. Therefore, $P(\theta_0)$ exists, is unique, and can be computed according to continuous-time Riccati differential equations [45–48]. Furthermore, it is known that real-parts of all eigenvalues of $\bar{A}_0 = A_0 - B_0 Q_u^{-1} B_0^\top P(\theta_0)$ are negative, i.e., the matrix $\exp(\bar{A}_0 t)$ decays exponentially fast as t grows [45–48]. So, under the linear feedback in (6), the closed-loop transition matrix is \bar{A}_0 and the solution of (1) is the Ornstein–Uhlenbeck process $x_t = e^{\bar{A}_0 t} x_0 + \int_0^t e^{\bar{A}_0(t-s)} d\mathbb{W}_s$ [44], which evolves in a stable manner because of $|\bar{\lambda}(\exp(\bar{A}_0 t))| < 1$. In the sequel, we use (5) and refer to the solution $P(\theta)$ for different stabilizable θ . More details about the above optimal feedback policy can be found in the aforementioned references.

In absence of exact knowledge of θ_0 , a policy $\hat{\pi}$ collects data and leverages it to approximate π_{opt} in (6). Therefore, at all (finite) times, there is a gap between the cost of $\hat{\pi}$, compared to that of π_{opt} . The cumulative performance degradation due to this gap is the *regret* of the policy $\hat{\pi}$, that we aim to minimize. Technically, whenever the control action u_t is designed by the policy $\hat{\pi}$ according to (4), concatenate the resulting state and input signals to get the observation $z_t(\hat{\pi}) = [x_t^\top, u_t^\top]^\top$. If it is clear from the context, we drop $\hat{\pi}$. Similarly, $z_t(\pi_{\text{opt}})$ denotes the observation signal of π_{opt} . Now, the regret at time T is defined by:

$$\text{Reg}_{\hat{\pi}}(T) = \int_0^T \left(\|Q^{1/2} z_t(\hat{\pi})\|^2 - \|Q^{1/2} z_t(\pi_{\text{opt}})\|^2 \right) dt.$$

A secondary objective is the learning accuracy of θ_0 from the single trajectory of the data generated by $\hat{\pi}$. Letting $\hat{\theta}_t$ be the parameter estimate at time t , we are interested in scaling of $\|\hat{\theta}_t - \theta_0\|$ with respect to t, p , and q .

3 Stabilizing the Diffusion Process

This section focuses on establishing that Thompson sampling (TS) learns to stabilize the diffusion process (1). First, let us intuitively discuss the problem of stabilizing unknown diffusion processes. Given that the optimal policy in (6) stabilizes the process in (1), a natural candidate to obtain a stable process under uncertainty of the drift matrices A_0, B_0 , is a linear feedback of the form $u_t = K x_t$.

So, letting $\bar{A} = A_0 + B_0 K$, we have $x_t = e^{\bar{A} t} x_0 + \int_0^t e^{\bar{A}(t-s)} d\mathbb{W}_s$ [44]. Thus, if real-part of an eigenvalue of \bar{A} is non-negative, then the magnitude of x_t grows unbounded with t [44]. Therefore, addressing instabilities of this form is important, *prior* to minimizing the cost. Otherwise, the regret grows (super) linearly with time. In particular, if A_0 has some eigenvalue(s) with non-negative real-part(s), then it is necessary to employ feedback to preclude instabilities.

In addition to minimizing the cost, the algebraic Riccati equation in (5) provides a reliable and widely-used framework for stabilization, as discussed after Definition 1. Accordingly, due to

uncertainty about θ_0 , one can solve (5) and find $P(\hat{\theta})$, only for an approximation $\hat{\theta}$ of θ_0 . Then, we expect to stabilize the system in (1) by applying a linear feedback that is designed for the approximate drift matrix $\hat{\theta}$. Technically, we need to ensure that all eigenvalues of $A_0 - B_0 Q_u^{-1} \hat{B}^\top P(\hat{\theta})$ lie in the open left half-plane. To ensure that these requirements are met in a sustainable manner, the main challenges are

- (i) fast and accurate learning of θ_0 so that after a short time period, a small error $\hat{\theta} - \theta_0$ is guaranteed,
- (ii) specifying the effect of the error $\hat{\theta} - \theta_0$, on stability of $A_0 - B_0 Q_u^{-1} \hat{B}^\top P(\hat{\theta})$, and
- (iii) devising a remedy for the case that the stabilization procedure fails.

Note that the last challenge is unavoidable, since learning from finite data can never be perfectly accurate, and so any finite-time stabilization procedure has a (possibly small) positive failure probability.

Algorithm 1 addresses the above challenges by applying additionally randomized control actions, and using them to provide a posterior belief \mathcal{D} about θ_0 . Note that the posterior is *not* concentrated at θ_0 , and a sample $\hat{\theta}$ from \mathcal{D} approximates θ_0 , crudely. Still, the theoretical analysis of Theorem 1 indicates that the failure probability of Algorithm 1 decays exponentially fast with the length of the time interval it is executed. Importantly, this small failure probability can shrink further by repeating the procedure of sampling from \mathcal{D} . So, stabilization under uncertainty is guaranteed, after a limited time of interacting with the environment.

To proceed, let $\{w_n\}_{n=0}^{\kappa}$ be a sequence of independent Gaussian vectors with the distribution $w_n \sim \mathcal{N}(0, \sigma_w^2 I_q)$, for some fixed constant σ_w . Suppose that we aim to devote the time length τ to collect observations for learning to stabilize. Note that since stabilization is performed before moving forward to the main objective of minimizing the cost functions, the stabilization time length τ is desired to be as short as possible. We divide this time interval of length τ into κ sub-intervals of equal length, and randomize an initial linear feedback policy by adding $\{w_n\}_{n=0}^{\kappa}$. That is, for $n = 0, 1, \dots, \kappa - 1$, Algorithm 1 employs the control action

$$\mathbf{u}_t = K\mathbf{x}_t + w_n, \quad \text{for } \frac{n\tau}{\kappa} \leq t < \frac{(n+1)\tau}{\kappa}, \quad (7)$$

where K is an initial stabilizing feedback so that all eigenvalues of $A_0 + B_0 K$ lie in the open left half-plane. In practice, such K is easily found using physical knowledge of the model, e.g., via conservative control sequence for an airplane [49, 50]. However, note that such actions are sub-optimal involving large regrets. Therefore, they are only temporarily applied, for the sake of data collection. Then, the data collected during the time interval $0 \leq t \leq \tau$ will be utilized by the algorithm to determine the posterior belief \mathcal{D}_τ , as follows. Recalling the notation $\mathbf{z}_t^\top = [\mathbf{x}_t^\top, \mathbf{u}_t^\top]$, let $\hat{\mu}_0, \hat{\Sigma}_0$ be the mean and the precision matrix of a prior normal distribution on θ_0 (using the notation defined in Section 1 for random matrices). Such a prior belief can be objectively calculated according to a previously available data or formed by subjective beliefs about the diffusion process under study, and in both cases can be used for speeding up the learning-based control of the system. Nonetheless, if there is no such prior, we simply let $\hat{\mu}_0 = 0_{(p+q) \times p}$ and $\hat{\Sigma}_0 = I_{p+q}$. Then, define

$$\hat{\Sigma}_\tau = \hat{\Sigma}_0 + \int_0^\tau \mathbf{z}_s \mathbf{z}_s^\top ds, \quad \hat{\mu}_\tau = \hat{\Sigma}_\tau^{-1} \left(\hat{\Sigma}_0 \hat{\mu}_0 + \int_0^\tau \mathbf{z}_s d\mathbf{x}_s^\top \right). \quad (8)$$

Using $\hat{\Sigma}_\tau \in \mathbb{R}^{(p+q) \times (p+q)}$ together with the mean matrix $\hat{\mu}_\tau$, Algorithm 1 forms the posterior belief

$$\mathcal{D}_\tau = \mathcal{N}(\hat{\mu}_\tau, \hat{\Sigma}_\tau^{-1}), \quad (9)$$

about the drift parameter θ_0 . So, as defined in the notation, the posterior distribution of every column $i = 1, \dots, p$ of θ_0 , is an independent multivariate normal with the covariance matrix $\hat{\Sigma}_\tau^{-1}$, while the mean is the column i of $\hat{\mu}_\tau$. The final step of Algorithm 1 is to output a sample $\hat{\theta}$ from \mathcal{D}_τ .

Next, to establish performance guarantees for Algorithm 1, let us quantify the *ideal* stability by

$$\zeta_0 = -\log \bar{\lambda}(\exp[A_0 - B_0 Q_u^{-1} B_0^\top P(\theta_0)]). \quad (10)$$

Algorithm 1 : Stabilization under Uncertainty

Inputs: initial feedback K , stabilization time length τ
for $n = 0, 1, \dots, \kappa - 1$ **do**
 while $n\tau\kappa^{-1} \leq t < (n + 1)\tau\kappa^{-1}$ **do**
 Apply control action u_t in (7)
 end while
end for
Calculate $\hat{\Sigma}_\tau, \hat{\mu}_\tau$ according to (8)
Return sample $\hat{\theta}$ from the distribution \mathcal{D}_τ in (9)

By definition, ζ_0 is positive. In fact, it is the smallest distance between the imaginary axis in the complex-plane, and the eigenvalues of the transition matrix $\bar{A}_0 = A_0 - B_0 Q_u^{-1} B_0^\top P(\theta_0)$, under the optimal policy in (6). Since θ_0 is unavailable, it is *not* realistic to expect that after applying a policy based on $\hat{\theta}$ given by Algorithm 1, real-parts of all eigenvalues of the resulting matrix $A_0 - B_0 Q_u^{-1} \hat{B}^\top P(\hat{\theta})$ are at most $-\zeta_0$. However, ζ_0 is crucial in studying stabilization, such that stabilizing controllers for systems with larger ζ_0 can be learned faster. The exact effect of this quantity, as well as those of other properties of the diffusion process, are formally established in the following result. Informally, the failure probability of Algorithm 1 decays exponentially with $\tau^{1/2}$.

Theorem 1 (Stabilization Guarantee) *For the sample $\hat{\theta}$ given by Algorithm 1, let \mathcal{E}_τ be the failure event that $A_0 - B_0 Q_u^{-1} \hat{B}^\top P(\hat{\theta})$ has an eigenvalue in the closed right half-plane. Then, if $\kappa \gtrsim \tau^2$ and $\log(pq\kappa) \lesssim \tau^{1/2}$, we have*

$$\log \mathbb{P}(\mathcal{E}_\tau) \lesssim - \frac{\lambda(\Sigma_{\mathbb{W}}) \wedge \sigma_w^2}{\lambda(\Sigma_{\mathbb{W}}) \vee \sigma_w^2} \frac{1 \wedge \zeta_0^p}{1 \vee \|K\|^3} \sqrt{\frac{\tau}{p^3 q}}. \quad (11)$$

The above result indicates that more heterogeneity in coordinates of the Wiener noise renders stabilization harder. Moreover, using (10), the term $1 \wedge \zeta_0^p$ reflects that less stable diffusion processes with smaller ζ_0 , are significantly harder to stabilize under uncertainty. Also as one can expect, larger dimensions make learning to stabilize harder. This is contributed by higher number of parameters to learn, as well as higher sensitivity of eigenvalues for processes of larger dimensions. Finally, the failure probability decays as $\tau^{1/2}$, mainly because continuous-time martingales have sub-exponential distributions, unlike sub-Gaussianity of discrete-time counterparts [51–53].

4 Thompson Sampling for Efficient Control: Algorithm and Theory

In this section, we proceed towards analysis of Thompson sampling (TS) for minimizing the quadratic cost in (3), and show that it efficiently learns the optimal control actions. That is, TS balances the exploration versus exploitation, such that its regret grows with (nearly) the square-root rate, as time grows. In the sequel, we introduce Algorithm 2 and discuss the conceptual and technical frameworks it relies on. Then, we establish efficiency by showing regret bounds in terms of different problem parameters and provide the rates of estimating the unknown drift matrices.

In Algorithm 2, first the learning-based stabilization Algorithm 1 is run during the time period $0 \leq t < \tau_0$. So, according to Theorem 1, the optimal feedback of $\hat{\theta}_0$ stabilizes the system with a high probability, as long as τ_0 is sufficiently large. Note that if growth of the state vector indicates that Algorithm 1 failed to stabilize, one can repeat sampling from \mathcal{D}_{τ_0} . So, we assume that the evolution of the controlled diffusion process remains stable when Algorithm 2 is being executed. On the other hand, the other benefit of running Algorithm 1 at the beginning is that it performs an initial exploration phase that will be utilized by Algorithm 2 to minimize the regret.

Then, in order to learn the optimal policy π_{opt} with minimal sub-optimality, RL algorithms need to cope with a fundamental challenge, commonly known as the exploration-exploitation dilemma. To see that, first note that an acceptable policy that aims to have sub-linear regret, needs to take near-optimal control actions in a long run; $u_t \approx -Q_u^{-1} B_0^\top P(\theta_0) x_t$. Although such policies exploit well and their control actions are close to that of π_{opt} , their regret grows large since they fail to

explore. Technically, the trajectory of observations $\{z_t\}_{t \geq 0}$ is not rich enough to provide accurate estimations, since in $z_t^\top = [x_t^\top, u_t^\top]$, the signal u_t is (almost) a linear function of the state signal x_t , and so does not contribute towards gathering information about the unknown parameter θ_0 . Conversely, for sufficient explorations, RL policies need to take actions that deviate from those of π_{opt} , which imposes large regret. Accordingly, the above trade-off needs to be delicately balanced; what we show that TS does.

Algorithm 2 is episodic; the parameter estimates $\hat{\theta}_n$ are updated only at the end of the episodes at times $\{\tau_n\}_{n=0}^\infty$, while during every episode, actions are taken as if $\hat{\theta}_n = [\hat{A}_n, \hat{B}_n]^\top$ is the unknown truth θ_0 . That is, for $\tau_{n-1} \leq t < \tau_n$, using $P(\hat{\theta}_n)$ in (5), we let $u_t = -Q_u^{-1} \hat{B}_n^\top P(\hat{\theta}_n) x_t$. Then, for each $n = 1, 2, \dots$, at time τ_n , we use all the observations collected so far, to find $\hat{\Sigma}_{\tau_n}, \hat{\mu}_{\tau_n}$ according to (8). Next, we use them to sample $\hat{\theta}_n$ from the posterior \mathcal{D}_{τ_n} in (9).

The episodes in Algorithm 2 are chosen such that their end points satisfy

$$0 < \underline{\alpha} \leq \inf_{n \geq 0} \frac{\tau_{n+1} - \tau_n}{\tau_n} \leq \sup_{n \geq 0} \frac{\tau_{n+1} - \tau_n}{\tau_n} \leq \bar{\alpha} < \infty, \quad (12)$$

for some fixed constants $\underline{\alpha}, \bar{\alpha}$. Broadly speaking, (12) lets the episode lengths of Algorithm 2 scale properly to avoid unnecessary updates of parameter estimates, while at the same time performing sufficient exploration. To see that, first note that since $\hat{\Sigma}_\tau$ grows with τ , the estimation error $\hat{\theta}_n - \theta_0$ decays (at best polynomially fast) with τ_n . So, until ensuring that updating the posterior yields to significantly better approximations, it will not be beneficial to update it, sample from it, and solve (5). So, the period $\tau_{n+1} - \tau_n$ that the data up to time τ_n is utilized, is set to be as long as $\underline{\alpha} \tau_n$. On the other hand, the above period cannot be too long, since we aim to improve the parameter estimates after collecting enough new observations; $\tau_{n+1} \leq (1 + \bar{\alpha}) \tau_n$. A simple setting is to let $\underline{\alpha} = \bar{\alpha}$, which yields to exponential episodes $\tau_n = \tau_0 (1 + \bar{\alpha})^n$. Note that for TS in continuous time, posterior updates should be limited to sufficiently-apart time points. Otherwise, repetitive updates are computationally impractical, and also can degrade the performance by preventing control actions from having enough time to effectively influence.

Algorithm 2 : Thompson Sampling for Efficient Control of Diffusion Processes

Inputs: stabilization time τ_0
 Calculate sample $\hat{\theta}_0$ by running Algorithm 1 for time τ_0
for $n = 1, 2, \dots$ **do**
 while $\tau_{n-1} \leq t < \tau_n$ **do**
 Apply control action $u_t = -Q_u^{-1} \hat{B}_{n-1}^\top P(\hat{\theta}_{n-1}) x_t$
 end while
 Letting $\hat{\Sigma}_{\tau_n}, \hat{\mu}_{\tau_n}$ be as (8), sample $\hat{\theta}_n$ from \mathcal{D}_{τ_n} given in (9)
end for

We show next that Algorithm 2 addresses the exploration-exploitation trade-off efficiently. To see the intuition, consider the sequence of posteriors \mathcal{D}_{τ_n} . The explorations Algorithm 2 performs by sampling $\hat{\theta}_n$ from \mathcal{D}_{τ_n} , depends on $\hat{\Sigma}_{\tau_n}$. Now, if hypothetically $\underline{\lambda}(\hat{\Sigma}_{\tau_n})$ is not large enough, then \mathcal{D}_{τ_n} does not sufficiently concentrate around $\hat{\mu}_{\tau_n}$ and so $\hat{\theta}_n$ will probably deviate from the previous samples $\{\hat{\theta}_i\}_{i=1}^{n-1}$. So, the algorithm explores more and obtains richer data z_t by diversifying the control signal u_t . This renders the next mean $\hat{\mu}_{\tau_{n+1}}$ a more accurate approximation of θ_0 , and also makes $\underline{\lambda}(\hat{\Sigma}_{\tau_{n+1}})$ grow faster than before. Thus, the next posterior $\mathcal{D}_{\tau_{n+1}}$ provides a better sample with smaller estimation error $\hat{\theta}_{n+1} - \theta_0$. Similarly, if a posterior is excessively concentrated, in a few episodes the posteriors adjust accordingly to the proper level of exploration. Hence, TS eventually balances the exploration versus the exploitation. This is formalized below.

Theorem 2 (Regret and Estimation Rates) *Parameter estimates and regret of Algorithm 2, satisfy*

$$\begin{aligned} \left\| \widehat{\boldsymbol{\theta}}_n - \boldsymbol{\theta}_0 \right\|^2 &\lesssim \frac{\bar{\lambda}(\Sigma_{\mathbb{W}})}{\underline{\lambda}(\Sigma_{\mathbb{W}})} (p+q)p \tau_n^{-1/2} \log \tau_n, \\ \text{Reg}(T) &\lesssim (\bar{\lambda}(\Sigma_{\mathbb{W}}) + \sigma_w^2) \tau_0 + \frac{\bar{\lambda}(\Sigma_{\mathbb{W}})^2 \|P(\boldsymbol{\theta}_0)\|^6}{\underline{\lambda}(\Sigma_{\mathbb{W}}) \underline{\lambda}(Q)^6} (p+q)p T^{1/2} \log T. \end{aligned}$$

In the above regret and estimation rates, and similar to Theorem 1, $\bar{\lambda}(\Sigma_{\mathbb{W}})/\underline{\lambda}(\Sigma_{\mathbb{W}})$ reflects the impact of heterogeneity in coordinates of \mathbb{W}_t on the quality of learning. Also, larger $\log(1 + \bar{\alpha})$ corresponds to longer episodes which compromises the estimation. Further, $p(p+q)$ shows that larger number of parameters linearly worsens the learning accuracy. In the regret bound, $\|P(\boldsymbol{\theta}_0)\|/\underline{\lambda}(Q)$ indicates effect of the true problem parameters $\boldsymbol{\theta}_0, Q$. Finally, $(\bar{\lambda}(\Sigma_{\mathbb{W}}) + \sigma_w^2) \tau_0$ captures the initial phase that Algorithm 1 is run for stabilization, which takes sub-optimal control actions as in (7).

5 Intuition and Summary of the Analysis

The goal of this section is to provide a high-level roadmap of the proofs of Theorems 1 and 2, and convey the main intuition behind the analysis. Complete proofs and the technical lemmas can be found in the longer version of the paper [54].

Summary of the Proof of Theorem 1. The main steps involve analyzing the estimation, studying its effect on the solutions of (5), and characterizing impact of errors in entries of parameter matrices on their eigenvalues. Next, we elaborate on these steps.

We show that the error satisfies $\left\| \widehat{\boldsymbol{\theta}} - \boldsymbol{\theta}_0 \right\| \lesssim p(p+q)^{1/2} \tau^{-1/2}$. More precisely, the error depends mainly on total strength of the observation signals \mathbf{z}_t , which are captured in the precision matrix $\widehat{\Sigma}_{\tau}$, as well as total interactions between the signal \mathbf{z}_t and the noise \mathbb{W}_t in the form of the stochastic integral matrix $\int_0^{\tau} \mathbf{z}_t d\mathbb{W}_t^{\top}$. However, we establish an upper bound $\bar{\lambda}(\widehat{\Sigma}_{\tau}^{-1}) \lesssim \tau^{-1}$, that indicates the concentration rate of the posterior \mathcal{D}_{τ} . Similarly, thanks to the randomization signal w_n , the signals \mathbf{z}_t are diverse enough to effectively explore the set of matrices $\boldsymbol{\theta} = [A, B]^{\top}$, leading to accurate approximation of $\boldsymbol{\theta}_0$ by the posterior mean matrix $\widehat{\boldsymbol{\mu}}_{\tau}$. Then, to bound the error terms caused by the Wiener noise \mathbb{W}_t , we establish the rate $p(p+q)^{1/2} \tau^{1/2}$. Indeed, we show that the entries of this error matrix are continuous-time martingales, and use exponential inequalities for quadratic forms and double stochastic integrals [52, 51] to establish that they have a sub-exponential distribution.

Moreover, the error rate of the feedback satisfies a similar property; $\left\| \widehat{B}^{\top} P(\widehat{\boldsymbol{\theta}}) - B_0^{\top} P(\boldsymbol{\theta}_0) \right\| \lesssim p(p+q)^{1/2} \tau^{-1/2}$. So, letting $\bar{A} = A_0 - B_0 Q_u^{-1} \widehat{B}^{\top} P(\widehat{\boldsymbol{\theta}})$ and $\bar{A}_0 = A_0 - B_0 Q_u^{-1} B_0^{\top} P(\boldsymbol{\theta}_0)$, it holds that $\|\bar{A} - \bar{A}_0\| \lesssim p(p+q)^{1/2} \tau^{-1/2}$. Next, to consider the effect of the errors on the eigenvalues of \bar{A} , we compare them to the eigenvalues of \bar{A}_0 , which are bounded by $-\zeta_0$ in (10). To that end, we establish a novel and tight perturbation analysis for eigenvalues of matrices, with respect to their entries and spectral properties. Using that, we show that the difference between the eigenvalues of \bar{A} and \bar{A}_0 scales as $(1 \vee r^{1/2} \|\bar{A} - \bar{A}_0\|)^{1/r}$, where r is the size of the largest block in the Jordan block-diagonalization of \bar{A}_0 . Therefore, for stability of \bar{A} , we need $\|\bar{A} - \bar{A}_0\| \lesssim p^{-1/2} (1 \wedge \zeta_0^p)$, since $r \leq p$. Note that if \bar{A}_0 is diagonalizable, $r = 1$ implies that we can replace the above upper bound by $1 \wedge \zeta_0$. Putting this stability result together with the estimation error in the previous paragraph, we obtain (11).

Summary of the Proof of Theorem 2. To establish the estimation rates, we develop multiple intermediate lemmas quantifying the exact amount of exploration Algorithm 2 performs. First, we utilize the fact that the bias of the posterior distribution \mathcal{D}_{τ_n} depends on its covariance matrix $\widehat{\Sigma}_{\tau_n}$, as well as a self-normalized continuous-time matrix-valued martingale. For the effect of the former, i.e., $\bar{\lambda}(\widehat{\Sigma}_{\tau_n}^{-1/2})$, we show an upper-bound of the order $\tau_n^{-1/4}$. To that end, the local geometry of the optimality manifolds that contain drift parameters $\boldsymbol{\theta}$ that has the same optimal feedback as that of the

unknown truth θ_0 in (6) are fully specified, and spectral properties of non-linear functions of random matrices are studied. Then, we establish a stochastic inequality for the self-normalized martingale, indicating that its scaling is of the order $p(p+q) \log \tau_n$. Therefore, utilizing the fact that $\hat{\theta}_n - \hat{\mu}_{\tau_n}$ has the same scaling as the bias matrix $\hat{\mu}_{\tau_n} - \theta_0$, we obtain the estimation rates of Theorem 2.

Next, to prove the presented regret bound, we establish a delicate and tight analysis for the dominant effect of the control signal u_t on the regret Algorithm 2 incurs. Technically, by carefully examining the infinitesimal influences of the control actions at every time on the cost, we show that it suffices to integrate the squared deviations $\left\| u_t + Q_u^{-1} \hat{B}_n^\top P(\hat{\theta}_n) x_t \right\|^2$ to obtain $\text{Reg}(T)$. We proceed toward specifying the effect of the exploration Algorithm 2 performs on its exploitation performance by proving the Lipschitz continuity of the solutions of the Riccati equation (5) with respect to the drift parameters: $\left\| P(\hat{\theta}_n) - P(\theta_0) \right\| \lesssim \left\| \hat{\theta}_n - \theta_0 \right\|$. This result is a very important property of (5) that lets the rates of deviations from the optimal action scale the same as the estimation error, and is proven by careful analysis of integration along matrix-valued curves in the space of drift matrices, as well as spectral analysis for approximate solutions of a Lyapunov equation. Thus, the regret bound is achieved, using the estimation error result in Theorem 2.

6 Numerical Analysis

We empirically evaluate the theoretical results of Theorems 1 and 2 for the flight control of X-29A airplane at 2000 ft [49]. Further numerical results for Boeing 747 airplanes [50] and for blood glucose control [55], can be found in the longer version of the paper [54]. The true drift matrices of the X-29A airplane are

$$A_0 = \begin{bmatrix} -0.16 & 0.07 & -1.00 & 0.04 \\ -15.20 & -2.60 & 1.11 & 0.00 \\ 6.84 & -0.10 & -0.06 & 0.00 \\ 0.00 & 1.00 & 0.07 & 0.00 \end{bmatrix}, \quad B_0 = \begin{bmatrix} -0.0006 & 0.0007 \\ 1.3430 & 0.2345 \\ 0.0897 & -0.0710 \\ 0.0000 & 0.0000 \end{bmatrix}.$$

Further, we let $\Sigma_w = 0.25 I_p$, $Q_x = I_p$, and $Q_u = 0.1 I_q$ where I_n is the n by n identity matrix. To update the diffusion process x_t in (1), time-steps of length 10^{-3} are employed. Then, in Algorithm 1, we let $\sigma_w = 5$, $\kappa = \lfloor \tau^{3/2} \rfloor$, while τ varies from 4 to 20 seconds. The initial feedback K is generated randomly. The results for 1000 repetitions are depicted on the left plot of Figure 1, confirming Theorem 1 that the failure probability of stabilization, decreases exponentially in τ .

On the right hand side of Figure 1, Algorithm 2 is executed for 600 second, for $\tau_n = 20 \times 1.1^n$. We compare TS with the *Randomized Estimate* algorithm [2] for 100 different repetitions. Average- and worst-case values of the estimation error and the regret are reported, both normalized by their scaling with time and dimension, as in Theorem 2. The graphs show that (especially the worst-case) regret of TS substantially outperforms, suggesting that TS explores in a more robust fashion.

7 Concluding Remarks and Future Work

We studied Thompson sampling (TS) reinforcement learning policies to control a diffusion process with unknown drift matrices. First, we proposed a stabilization algorithm for linear diffusion processes, and established that its failure probability decays exponentially with time. Furthermore, efficiency of TS in balancing exploration versus exploitation for minimizing a quadratic cost function is shown. More precisely, regret bounds growing as square-root of time and square of dimensions are established for Algorithm 2. Empirical studies showcasing superiority of TS over state-of-the-art, are provided as well.

As the first theoretical analysis of TS for control of a continuous-time model, this work implies multiple important future directions. Establishing minimax regret lower-bounds for diffusion process control problem is yet unanswered. Moreover, studying the performance of TS for robust control of the diffusion processes aiming to simultaneously minimize the cost function for a family of drift matrices, is also an interesting direction for further investigation. Another problem of interest is efficiency of TS for learning to control under partial observation where the state is not observed and instead a noisy linear function of the state is available as the output signal.

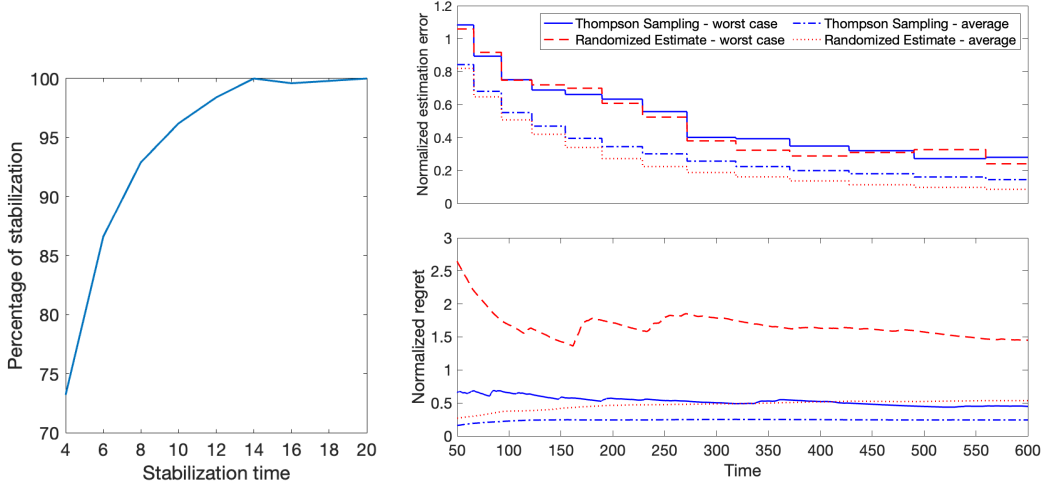


Figure 1: For the X-29A flight control problem, percentage of stabilization for 1000 runs of Algorithm 1 is plotted on the left. The graphs on the right depict the performance of Algorithm 2 (blue) compared to Randomized Estimate policy (red) [2]. The top graph plots the normalized squared estimation error, $\left\| \hat{\theta}_n - \theta_0 \right\|^2$ divided by $p(p+q)\tau_n^{-1/2} \log \tau_n$, versus time, while the lower one showcases the regret $\text{Reg}(T)$, normalized by $p(p+q)T^{1/2} \log T$. Curves for the worst-case among 100 replications are provided for both quantities, as well as for the averages over all replicates.

References

- [1] W. R. Thompson, “On the likelihood that one unknown probability exceeds another in view of the evidence of two samples,” *Biometrika*, vol. 25, no. 3/4, pp. 285–294, 1933.
- [2] M. K. S. Faradonbeh and M. S. S. Faradonbeh, “Efficient estimation and control of unknown stochastic differential equations,” *arXiv preprint arXiv:2109.07630*, 2021.
- [3] P. A. Ioannou and J. Sun, *Robust adaptive control*. PTR Prentice-Hall Upper Saddle River, NJ, 1996, vol. 1.
- [4] F. L. Lewis, L. Xie, and D. Popa, *Optimal and robust estimation: with an introduction to stochastic control theory*. CRC press, 2017.
- [5] A. Subrahmanyam and G. P. Rao, *Identification of Continuous-time Systems: Linear and Robust Parameter Estimation*. CRC Press, 2019.
- [6] J. Umenberger, M. Ferizbegovic, T. B. Schön, and H. Hjalmarsson, “Robust exploration in linear quadratic reinforcement learning,” *Advances in Neural Information Processing Systems*, vol. 32, 2019.
- [7] S. Agrawal and N. Goyal, “Analysis of thompson sampling for the multi-armed bandit problem,” in *Conference on learning theory*. JMLR Workshop and Conference Proceedings, 2012, pp. 39–1.
- [8] —, “Further optimal regret bounds for thompson sampling,” in *Artificial intelligence and statistics*. PMLR, 2013, pp. 99–107.
- [9] A. Gopalan and S. Mannor, “Thompson sampling for learning parameterized markov decision processes,” in *Conference on Learning Theory*. PMLR, 2015, pp. 861–898.
- [10] M. J. Kim, “Thompson sampling for stochastic control: The finite parameter case,” *IEEE Transactions on Automatic Control*, vol. 62, no. 12, pp. 6415–6422, 2017.

- [11] M. Abeille and A. Lazaric, “Linear thompson sampling revisited,” in *Artificial Intelligence and Statistics*. PMLR, 2017, pp. 176–184.
- [12] N. Hamidi and M. Bayati, “On worst-case regret of linear thompson sampling,” *arXiv preprint arXiv:2006.06790*, 2020.
- [13] D. Russo and B. Van Roy, “Learning to optimize via posterior sampling,” *Mathematics of Operations Research*, vol. 39, no. 4, pp. 1221–1243, 2014.
- [14] —, “An information-theoretic analysis of thompson sampling,” *The Journal of Machine Learning Research*, vol. 17, no. 1, pp. 2442–2471, 2016.
- [15] D. Russo, B. Van Roy, A. Kazerouni, I. Osband, and Z. Wen, “A tutorial on thompson sampling,” *arXiv preprint arXiv:1707.02038*, 2017.
- [16] A. A. Feldbaum, “Dual control theory. i,” *Avtomatika i Telemekhanika*, vol. 21, no. 9, pp. 1240–1249, 1960.
- [17] J. Florentin, “Optimal, probing, adaptive control of a simple bayesian system,” *International Journal of Electronics*, vol. 13, no. 2, pp. 165–177, 1962.
- [18] E. Tse and Y. Bar-Shalom, “An actively adaptive control for linear systems with random parameters via the dual control approach,” *IEEE Transactions on Automatic Control*, vol. 18, no. 2, pp. 109–117, 1973.
- [19] J. Sternby, “A simple dual control problem with an analytical solution,” *IEEE Transactions on Automatic Control*, vol. 21, no. 6, pp. 840–844, 1976.
- [20] R. F. Stengel, *Optimal control and estimation*. Courier Corporation, 1994.
- [21] B. Wittenmark, “Adaptive dual control methods: An overview,” *Adaptive Systems in Control and Signal Processing 1995*, pp. 67–72, 1995.
- [22] E. D. Klenske and P. Hennig, “Dual control for approximate bayesian reinforcement learning,” *The Journal of Machine Learning Research*, vol. 17, no. 1, pp. 4354–4383, 2016.
- [23] M. Abeille and A. Lazaric, “Improved regret bounds for thompson sampling in linear quadratic control problems,” in *International Conference on Machine Learning*. PMLR, 2018, pp. 1–9.
- [24] Y. Ouyang, M. Gagrani, and R. Jain, “Posterior sampling-based reinforcement learning for control of unknown linear systems,” *IEEE Transactions on Automatic Control*, vol. 65, no. 8, pp. 3600–3607, 2019.
- [25] M. K. S. Faradonbeh, A. Tewari, and G. Michailidis, “Finite-time adaptive stabilization of linear systems,” *IEEE Transactions on Automatic Control*, vol. 64, no. 8, pp. 3498–3505, 2018.
- [26] —, “Randomized algorithms for data-driven stabilization of stochastic linear systems,” in *2019 IEEE Data Science Workshop (DSW)*. IEEE, 2019, pp. 170–174.
- [27] —, “On applications of bootstrap in continuous space reinforcement learning,” in *2019 IEEE 58th Conference on Decision and Control (CDC)*. IEEE, 2019, pp. 1977–1984.
- [28] —, “On adaptive linear–quadratic regulators,” *Automatica*, vol. 117, p. 108982, 2020.
- [29] —, “Input perturbations for adaptive control and learning,” *Automatica*, vol. 117, p. 108950, 2020.
- [30] —, “Optimism-based adaptive regulation of linear-quadratic systems,” *IEEE Transactions on Automatic Control*, vol. 66, no. 4, pp. 1802–1808, 2020.
- [31] S. Sudhakara, A. Mahajan, A. Nayyar, and Y. Ouyang, “Scalable regret for learning to control network-coupled subsystems with unknown dynamics,” *arXiv preprint arXiv:2108.07970*, 2021.
- [32] P. Mandl, “Consistency of estimators in controlled systems,” in *Stochastic Differential Systems*. Springer, 1989, pp. 227–234.

- [33] T. E. Duncan and B. Pasik-Duncan, “Adaptive control of continuous-time linear stochastic systems,” *Mathematics of Control, signals and systems*, vol. 3, no. 1, pp. 45–60, 1990.
- [34] P. Caines, “Continuous time stochastic adaptive control: non-explosion, ε -consistency and stability,” *Systems & control letters*, vol. 19, no. 3, pp. 169–176, 1992.
- [35] T. E. Duncan, L. Guo, and B. Pasik-Duncan, “Adaptive continuous-time linear quadratic gaussian control,” *IEEE Transactions on automatic control*, vol. 44, no. 9, pp. 1653–1662, 1999.
- [36] P. E. Caines and D. Levanony, “Stochastic ε -optimal linear quadratic adaptation: An alternating controls policy,” *SIAM Journal on Control and Optimization*, vol. 57, no. 2, pp. 1094–1126, 2019.
- [37] S. A. A. Rizvi and Z. Lin, “Output feedback reinforcement learning control for the continuous-time linear quadratic regulator problem,” in *2018 Annual American Control Conference (ACC)*. IEEE, 2018, pp. 3417–3422.
- [38] K. Doya, “Reinforcement learning in continuous time and space,” *Neural computation*, vol. 12, no. 1, pp. 219–245, 2000.
- [39] H. Wang, T. Zariphopoulou, and X. Y. Zhou, “Reinforcement learning in continuous time and space: A stochastic control approach.” *J. Mach. Learn. Res.*, vol. 21, pp. 198–1, 2020.
- [40] Z.-P. Jiang, T. Bian, and W. Gao, “Learning-based control: A tutorial and some recent results,” *Foundations and Trends® in Systems and Control*, vol. 8, no. 3, 2020.
- [41] M. Basei, X. Guo, A. Hu, and Y. Zhang, “Logarithmic regret for episodic continuous-time linear-quadratic reinforcement learning over a finite-time horizon,” *Available at SSRN 3848428*, 2021.
- [42] L. Szpruch, T. Treetanhiplout, and Y. Zhang, “Exploration-exploitation trade-off for continuous-time episodic reinforcement learning with linear-convex models,” *arXiv preprint arXiv:2112.10264*, 2021.
- [43] M. K. S. Faradonbeh and M. S. S. Faradonbeh, “Bayesian algorithms learn to stabilize unknown continuous-time systems,” *arXiv preprint arXiv:2112.15094*, 2021.
- [44] I. Karatzas and S. Shreve, *Brownian motion and stochastic calculus*. Springer Science & Business Media, 2012, vol. 113.
- [45] G. Chen, G. Chen, and S.-H. Hsu, *Linear stochastic control systems*. CRC press, 1995, vol. 3.
- [46] J. Yong and X. Y. Zhou, *Stochastic controls: Hamiltonian systems and HJB equations*. Springer Science & Business Media, 1999, vol. 43.
- [47] H. Pham, *Continuous-time stochastic control and optimization with financial applications*. Springer Science & Business Media, 2009, vol. 61.
- [48] S. P. Bhattacharyya and L. H. Keel, *Linear Multivariable Control Systems*. Cambridge University Press, 2022.
- [49] J. T. Bosworth, *Linearized aerodynamic and control law models of the X-29A airplane and comparison with flight data*. National Aeronautics and Space Administration, Office of Management . . . , 1992, vol. 4356.
- [50] T. Ishihara, H.-J. Guo, and H. Takeda, “A design of discrete-time integral controllers with computation delays via loop transfer recovery,” *Automatica*, vol. 28, no. 3, pp. 599–603, 1992.
- [51] P. Cheridito, H. M. Soner, and N. Touzi, “Small time path behavior of double stochastic integrals and applications to stochastic control,” *The Annals of Applied Probability*, vol. 15, no. 4, pp. 2472–2495, 2005.
- [52] B. Laurent and P. Massart, “Adaptive estimation of a quadratic functional by model selection,” *Annals of Statistics*, pp. 1302–1338, 2000.

- [53] J. A. Tropp, “User-friendly tail bounds for sums of random matrices,” *Foundations of computational mathematics*, vol. 12, no. 4, pp. 389–434, 2012.
- [54] M. K. S. Faradonbeh, M. S. S. Faradonbeh, and M. Bayati, “Thompson sampling efficiently learns to control diffusion processes,” *arXiv preprint arXiv:2206.09977*, 2022.
- [55] T. Zhou, J. L. Dickson, and J. Geoffrey Chase, “Autoregressive modeling of drift and random error to characterize a continuous intravascular glucose monitoring sensor,” *Journal of Diabetes Science and Technology*, vol. 12, no. 1, pp. 90–104, 2018.

Checklist

1. For all authors...
 - (a) Do the main claims made in the abstract and introduction accurately reflect the paper's contributions and scope? [Yes]
 - (b) Did you describe the limitations of your work? [Yes] ; See Sections 3 and 4.
 - (c) Did you discuss any potential negative societal impacts of your work? [N/A]
 - (d) Have you read the ethics review guidelines and ensured that your paper conforms to them? [Yes]
2. If you are including theoretical results...
 - (a) Did you state the full set of assumptions of all theoretical results? [Yes] ; See Theorems 1 and 2, as well as their discussions.
 - (b) Did you include complete proofs of all theoretical results? [Yes] ; Proofs are provided in the longer version of the paper [54].
3. If you ran experiments...
 - (a) Did you include the code, data, and instructions needed to reproduce the main experimental results (either in the supplemental material or as a URL)? [Yes] ; See Section 6
 - (b) Did you specify all the training details (e.g., data splits, hyperparameters, how they were chosen)? [N/A]
 - (c) Did you report error bars (e.g., with respect to the random seed after running experiments multiple times)? [N/A] ; The reported curves reflect the worst-case analysis and so no error bars are needed.
 - (d) Did you include the total amount of compute and the type of resources used (e.g., type of GPUs, internal cluster, or cloud provider)? [No] .
4. If you are using existing assets (e.g., code, data, models) or curating/releasing new assets...
 - (a) If your work uses existing assets, did you cite the creators? [N/A]
 - (b) Did you mention the license of the assets? [N/A]
 - (c) Did you include any new assets either in the supplemental material or as a URL? [N/A]
 - (d) Did you discuss whether and how consent was obtained from people whose data you're using/curating? [N/A]
 - (e) Did you discuss whether the data you are using/curating contains personally identifiable information or offensive content? [N/A]
5. If you used crowdsourcing or conducted research with human subjects...
 - (a) Did you include the full text of instructions given to participants and screenshots, if applicable? [N/A]
 - (b) Did you describe any potential participant risks, with links to Institutional Review Board (IRB) approvals, if applicable? [N/A]
 - (c) Did you include the estimated hourly wage paid to participants and the total amount spent on participant compensation? [N/A]