

SKILL-BASED META-REINFORCEMENT LEARNING

Taewook Nam¹, Shao-Hua Sun², Karl Pertsch², Sung Ju Hwang^{1,3}, Joseph J. Lim²

Korea Advanced Institute of Science and Technology¹

University of Southern California², AITRICS³

namsan@kaist.ac.kr, {shaohuas, pertsch}@usc.edu,

sjhwang82@kaist.ac.kr, limjj@usc.edu

ABSTRACT

While deep reinforcement learning methods have shown impressive results in robot learning, their sample inefficiency makes the learning of complex, long-horizon behaviors with real robot systems infeasible. To mitigate this issue, meta-reinforcement learning methods aim to enable fast learning on novel tasks by learning how to learn. Yet, the application has been limited to short-horizon tasks with dense rewards. To enable learning long-horizon behaviors, recent works have explored leveraging prior experience in the form of offline datasets without reward or task annotations. While these approaches yield improved sample efficiency, millions of interactions with environments are still required to solve complex tasks. In this work, we devise a method that enables meta-learning on long-horizon, sparse-reward tasks, allowing us to solve unseen target tasks with orders of magnitude fewer environment interactions. Our core idea is to leverage prior experience extracted from offline datasets during meta-learning. Specifically, we propose to (1) extract reusable skills and a skill prior from offline datasets, (2) meta-train a high-level policy that learns to efficiently compose learned skills into long-horizon behaviors, and (3) rapidly adapt the meta-trained policy to solve an unseen target task. Experimental results on continuous control tasks in navigation and manipulation demonstrate that the proposed method can efficiently solve long-horizon novel target tasks by combining the strengths of meta-learning and the usage of offline datasets, while prior approaches in RL, meta-RL, and multi-task RL require substantially more environment interactions to solve the tasks.

1 INTRODUCTION

In recent years, deep reinforcement learning methods have achieved impressive results in robot learning (Gu et al., 2017; Andrychowicz et al., 2020; Kalashnikov et al., 2021). Yet, existing approaches are sample inefficient, thus rendering the learning of complex behaviors through trial and error learning infeasible, especially on real robot systems. In contrast, humans are capable of effectively learning a variety of complex skills in only a few trials. This can be greatly attributed to our ability to learn how to learn new tasks quickly by efficiently utilizing previously acquired skills.

Can machines likewise learn to how to learn by efficiently utilizing learned skills like humans? Meta-reinforcement learning (meta-RL) holds the promise of allowing RL agents to acquire novel tasks with improved efficiency by learning to learn from a distribution of tasks (Finn et al., 2017; Rakelly et al., 2019). In spite of recent advances in the field, most existing meta-RL algorithms are restricted to short-horizon, dense-reward tasks. To facilitate efficient learning on long-horizon, sparse-reward tasks, recent works aim to leverage experience from prior tasks in the form of offline datasets without additional reward and task annotations (Lynch et al., 2020;

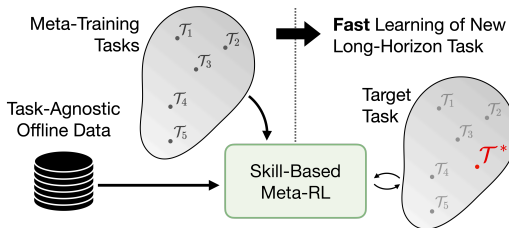


Figure 1: We propose a method that jointly leverages (1) a large offline dataset of prior experience collected across many tasks without reward or task annotations and (2) a set of meta-training tasks to learn how to quickly solve unseen long-horizon tasks. Our method extracts reusable skills from the offline dataset and meta-learn a policy to quickly use them for solving new tasks.

Pertsch et al., 2020; Chebotar et al., 2021). While these methods can solve complex tasks with substantially improved sample efficiency over methods learning from scratch, millions of interactions with environments are still required to acquire long-horizon skills.

In this work, we aim to take a step towards combining the capabilities of *both* learning how to quickly learn new tasks while *also* leveraging prior experience in the form of unannotated offline data (see Figure 1). Specifically, we aim to devise a method that enables meta-learning on complex, long-horizon tasks and can solve unseen target tasks with orders of magnitude fewer environment interactions than prior works.

We propose to leverage the offline experience by extracting reusable *skills* – short-term behaviors that can be composed to solve unseen long-horizon tasks. We employ a hierarchical meta-learning scheme in which we meta-train a high-level policy to learn how to quickly reuse the extracted skills. To efficiently explore the learned skill space during meta-training, the high-level policy is guided by a skill prior which is also acquired from the offline experience data.

We evaluate our method and prior approaches in deep RL, skill-based RL, meta-RL, and multi-task RL on two challenging continuous control environments: maze navigation and kitchen manipulation, which require long-horizon control and only provides sparse rewards. Experimental results show that our method can efficiently solve unseen tasks by exploiting meta-learning tasks and offline datasets, while prior approaches require substantially more samples or fail to solve the tasks.

In summary, the main contributions of this paper are threefold:

- To the best of our knowledge, this is the first work to combine meta-reinforcement learning algorithms with task-agnostic offline datasets that do not contain reward or task annotations.
- We propose a method that combines meta-learning with offline data by extracting learned skills and a skill prior as well as meta-learning a hierarchical skill policy regularized by the skill prior.
- We empirically show that our method is significantly more efficient at learning long-horizon sparse-reward tasks compared to prior methods in deep RL, skill-based RL, meta-RL, and multi-task RL.

2 RELATED WORK

Meta-Reinforcement Learning. Meta-RL approaches (Duan et al., 2016; Wang et al., 2017; Finn et al., 2017; Yu et al., 2018; Rothfuss et al., 2019; Gupta et al., 2018; Vuorio et al., 2018; Nagabandi et al., 2019; Clavera et al., 2019; 2018; Rakelly et al., 2019; Vuorio et al., 2019; Yang et al., 2019; Zintgraf et al., 2019; Humplik et al., 2019; Zintgraf et al., 2020; Liu et al., 2021) hold the promise of allowing learning agents to quickly adapt to novel tasks by learning to learn from a distribution of tasks. Despite the recent advances in the field, most existing meta-RL algorithms are limited to short-horizon and dense-reward tasks. In contrast, we aim to develop a method that can meta-learn to solve long-horizon tasks with sparse rewards by leveraging offline datasets.

Offline datasets. Recently, many works have investigated the usage of offline datasets for agent training. In particular, the field of *offline reinforcement learning* (Levine et al., 2020; Siegel et al., 2020; Kumar et al., 2020; Yu et al., 2021) aims to devise methods that can perform RL fully offline from pre-collected data, without the need for environment interactions. However, these methods require target task reward annotations on the offline data for every new tasks that should be learned. These reward annotations can be challenging to obtain, especially if the offline data is collected from a diverse set of prior tasks. In contrast, our method is able to leverage offline datasets without any reward annotations.

Offline Meta-RL. Another recent line of research aims to *meta-learn* from static, pre-collected datasets including reward annotations (Mitchell et al., 2021; Pong et al., 2021; Dorfman et al., 2021). After meta-training with the offline datasets, these works aim to quickly adapt to a new task with only a small amount of data from that new task. In contrast to the aforementioned offline RL methods these works aim to adapt to *unseen* tasks and assume access to only *limited data* from the new tasks. However, in addition to reward annotations, these approaches often require that the offline training data is split into separate datasets for each training tasks, further limiting the scalability.

Skill-based Learning. An alternative approach for leveraging offline data that does not require reward or task annotations is through the extraction of skills – reusable short-horizon behaviors. Methods for skill-based learning recombine these skills for learning unseen target tasks and converge substantially faster than methods that learn from scratch (Lee et al., 2018; Hausman et al., 2018; Sharma et al., 2020). When trained from diverse datasets these approaches can extract a wide repertoire of skills and learn complex, long-horizon tasks (Merel et al., 2020; Lynch et al., 2020; Pertsch et al., 2020; Ajay et al., 2021; Chebotar et al., 2021; Pertsch et al., 2021). Yet, although they are more efficient than training from scratch, they still require a large number of environment interactions to learn a new task. Our method instead combines skills extracted from offline data with meta-learning, leading to significantly improved sample efficiency.

3 PROBLEM FORMULATION AND PRELIMINARIES

Our approach builds on prior work for meta-learning and learning from offline datasets and aims to combine the best of both worlds. In the following we will formalize our problem setup and briefly summarize relevant prior work.

Problem Formulation. Following prior work on learning from large offline datasets (Lynch et al., 2020; Pertsch et al., 2020; 2021), we assume access to a dataset of state-action trajectories $\mathbf{D} = \{s_t, a_t, \dots\}$ which is collected either across a wide variety of tasks or as “play data” with no particular task in mind. We thus refer to this dataset as *task-agnostic*. With a large number of data collection tasks, the dataset covers a wide variety of behaviors and can be used to accelerate learning on diverse tasks. Such data can be collected at scale, *e.g.* through autonomous exploration (Hausman et al., 2018; Sharma et al., 2020; Dasari et al., 2019), human teleoperation (Schaal et al., 2005; Gupta et al., 2019; Mandlekar et al., 2018; Lynch et al., 2020), or from previously trained agents (Fu et al., 2020; Gulcehre et al., 2020). We additionally assume access to a set of meta-training tasks $\mathbf{T} = \{\mathcal{T}_1, \dots, \mathcal{T}_N\}$, where each task is represented as a Markov decision process (MDP) defined by a tuple $\{\mathcal{S}, \mathcal{A}, \mathcal{P}, r, \rho, \gamma\}$ of states, actions, transition probability, reward, initial state distribution, and discount factor.

Our goal is to leverage both, the offline dataset \mathbf{D} and the meta-training tasks \mathbf{T} , to accelerate the training of a policy $\pi(a|s)$ on a target task \mathcal{T}^* which is also represented as an MDP. Crucially, we do not assume that \mathcal{T}^* is a part of the set of training tasks \mathbf{T} , nor that \mathbf{D} contains demonstrations for solving \mathcal{T}^* . Thus, we aim to design an algorithm that can leverage offline data and meta-training tasks for learning how to quickly compose known skills for solving an unseen target task. Next, we will describe existing approaches that *either* leverage offline data *or* meta-training tasks to accelerate target task learning. Then, we describe how our approach takes advantage of the best of both worlds.

Skill-based RL. One successful approach for leveraging task-agnostic datasets for accelerating the learning of unseen tasks is through the transfer of reusable *skills*, *i.e.* short-horizon behaviors that can be composed to solve long-horizon tasks. Prior work in skill-based RL called Skill-Prior RL (SPiRL, Pertsch et al. (2020)) proposes an effective way to implement this idea. Specifically, SPiRL uses a task-agnostic dataset to learn two models: (1) a skill policy $\pi(a|s, z)$ that decodes a latent skill representation z into a sequence of executable actions and (2) a prior over latent skill variables $p(z|s)$ which can be leveraged to guide exploration in skill space. SPiRL uses these skills for learning new tasks efficiently by training a high-level skill policy $\pi(z|s)$ that acts over the space of learned skills instead of primitive actions. The target task RL objective extends Soft Actor Critic (SAC, Haarnoja et al. (2018)), a popular off-policy RL algorithm, by guiding the high-level policy with the learned skill prior:

$$\max_{\pi} \sum_t \mathbb{E}_{(s_t, z_t) \sim \rho_{\pi}} [r(s_t, z_t) - \alpha D_{\text{KL}}(\pi(z|s_t), p(z|s_t))]. \quad (1)$$

Here D_{KL} denotes the Kullback-Leibler divergence between the policy and skill prior, and α is a weighting coefficient.

Off-Policy Meta-RL. Rakelly et al. (2019) introduced an off-policy meta-RL algorithm called probabilistic embeddings for actor-critic RL (PEARL) that leverages a set of training tasks \mathbf{T} to enable quick learning of new tasks. Specifically, PEARL leverages the meta-training tasks for learning a task encoder $q(e|c)$. This encoder takes in a small set of state-action-reward transitions c and produces a task embedding e . This embedding is used to condition the actor $\pi(a|s, z)$ and critic $Q(s, a, e)$. In PEARL, actor, critic and task encoder are trained by jointly maximizing the obtained

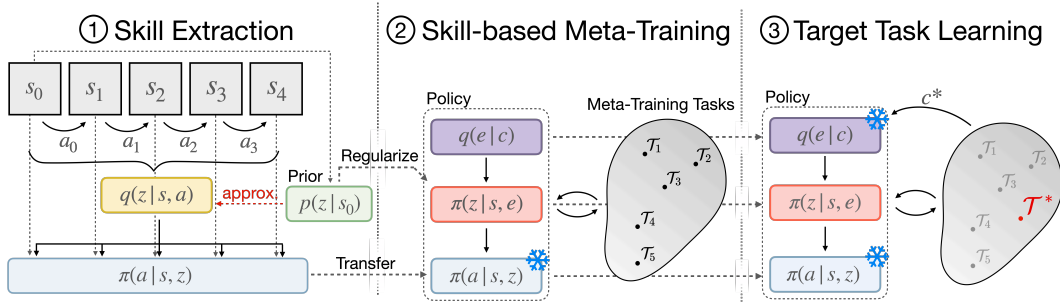


Figure 2: **Method Overview.** Our proposed skill-based meta-RL method has three phases. **(1) Skill Extraction:** learns reusable skills from snippets of task-agnostic offline data through a skill extractor (yellow) and low-level skill policy (blue). Also trains a prior distribution over skill embeddings (green). **(2) Skill-based Meta-training:** Meta-trains a high-level skill policy (red) and task encoder (purple) while using the pre-trained low-level policy. The pre-trained skill prior is used to regularize the high-level policy during meta-training and guide exploration. **(3) Target Task Learning:** Leverages the meta-trained hierarchical policy for quick learning of an unseen target task. After conditioning the policy by encoding a few transitions c^* from the target task \mathcal{T}^* , we continue fine-tuning the high-level skill policy on the target task while regularizing it with the pre-trained skill prior.

reward and the policy’s entropy \mathcal{H} (Haarnoja et al., 2018):

$$\max_{\pi} \mathbb{E}_{\mathcal{T} \sim p_{\mathcal{T}}, e \sim q(\cdot | c_{\mathcal{T}})} \left[\sum_t \mathbb{E}_{(s_t, a_t) \sim \rho_{\pi|e}} [r_{\mathcal{T}}(s_t, a_t) + \alpha \mathcal{H}(\pi(a|s_t, e))] \right]. \quad (2)$$

Additionally, the task embedding output of the task encoder is regularized towards a constant prior distribution $p(e)$.

4 APPROACH

We propose **Skill-based Meta-Policy Learning (SiMPL)**, an algorithm for jointly leveraging offline data as well as a set of meta-training tasks to accelerate the learning of unseen target tasks. Our method has three phases: **(1) skill extraction:** we extract reusable skills and a skill prior from the offline data (Section 4.1), **(2) skill-based meta-training:** we utilize the meta-training tasks to learn how to leverage the extracted skills and skill prior to efficiently solve new tasks (Section 4.2), **(3) target task learning:** we fine-tune the meta-trained policy to rapidly adapt to solve an unseen target task (Section 4.3). An illustration of the proposed method is shown in Figure 2.

4.1 SKILL EXTRACTION

To acquire a set of reusable skills from the offline dataset \mathbf{D} , we leverage the skill extraction approach proposed in Pertsch et al. (2020). Concretely, we jointly train (1) a skill encoder $q(z|s_{0:K}, a_{0:K-1})$ that embeds an K -steps trajectory randomly cropped from the sequences in \mathbf{D} into a low-dimensional skill embedding z , and (2) a low-level skill policy $\pi(a_t|s_t, z)$ that is trained with behavioral cloning to reproduce the action sequence $a_{0:K-1}$ given the skill embedding. To learn a smooth skill representation, we regularize the output of the skill encoder with a unit Gaussian prior distribution, and weight this regularization by a coefficient β (Higgins et al., 2017):

$$\max_{q, \pi} \mathbb{E}_{z \sim q} \left[\underbrace{\prod_{t=0}^{K-1} \log \pi(a_t | s_t, z)}_{\text{behavioral cloning}} - \beta \underbrace{D_{\text{KL}}(q(z|s_{0:K}, a_{0:K-1}), \mathcal{N}(0, I))}_{\text{embedding regularization}} \right]. \quad (3)$$

Additionally, we follow Pertsch et al. (2020) and learn a skill prior $p(z|s)$ that captures the distribution of skills likely to be executed in a given state under the training data distribution. The prior is trained to match the output of the skill encoder: $\min_p D_{\text{KL}}([q(z|s_{0:K}, a_{0:K-1})], p(z|s_0))$. Here $[\cdot]$ indicates that gradient flow is stopped into the skill encoder for training the skill prior.

4.2 SKILL-BASED META-TRAINING

We aim to learn a policy that can quickly learn to leverage the extracted skills to solve new tasks. We leverage off-policy meta-RL (see Section 3) to learn such a policy using our set of meta-training tasks \mathcal{T} . Similar to PEARL (Rakelly et al., 2019), we train a task-encoder that takes in a set of sampled transitions and produces a task embedding e . Crucially, we leverage our learned skills by training a task-embedding-conditioned policy over *skills* instead of primitive actions: $\pi(z|s, e)$, thus equipping the policy with a set of useful pre-trained behaviors and reducing the meta-training task to learning how to combine these behaviors instead of learning them from scratch. We find that this usage of offline data through learned skills is crucial for enabling meta-training on complex, long-horizon tasks (see Section 5).

Prior work has shown that the efficiency of RL on learned skill spaces can be substantially improved by guiding the policy with a learned skill prior (Pertsch et al., 2020; Ajay et al., 2021). Thus, instead of regularizing with a maximum entropy objective as done in prior work on off-policy meta-RL (Rakelly et al., 2019), we propose to regularize the meta-training policy with our pre-trained skill prior, leading to the following meta-training objective:

$$\max_{\pi} \mathbb{E}_{\mathcal{T} \sim p_{\mathcal{T}}, e \sim q(\cdot|c^{\mathcal{T}})} \left[\sum_t \mathbb{E}_{(s_t, z_t) \sim \rho_{\pi|e}} [r_{\mathcal{T}}(s_t, z_t) - \alpha D_{\text{KL}}(\pi(z|s_t, e), p(z|s_t))] \right]. \quad (4)$$

where α determines the strength of the prior regularization. We automatically tune α via dual gradient descent by choosing a target divergence δ between policy and prior (Pertsch et al., 2020).

To compute the task embedding e , we used multiple different sizes of c . We found that we can increase training stability by adjusting the strength of the prior regularization to the size of the conditioning set. Intuitively, when the high-level policy is conditioned on only a few transitions, i.e. when the set c is small, it has only little information about the task at hand and should thus be regularized stronger towards the task-agnostic skill prior. Conversely, when c is large, the policy likely has more information about the target task and thus should be allowed to deviate from the skill prior more to solve the task, i.e. have a weaker regularization strength.

To implement this intuition, we employ a simple approach: we define *two* target divergences δ_1 and δ_2 and associated auto-tuned coefficients α_1 and α_2 with $\delta_1 < \delta_2$. We regularize the policy using the larger coefficient α_1 with small conditioning transition set and otherwise we regularize using the smaller coefficient α_2 . We found this technique simple yet sufficient in our experiments and leave the investigation of more sophisticated regularization approaches for future work.

4.3 TARGET TASK LEARNING

When a target task is given, we aim to leverage the meta-trained policy for quickly learning how to solve it. Intuitively, the policy should first explore different skill options to learn about the task at hand and then rapidly narrow its output distribution to those skills that solve the task. We implement this intuition by first collecting a small set of conditioning transitions c^* from the target task by exploring with the meta-trained policy. Since we have no information about the target task at this stage, we explore the environment by conditioning our pre-trained policy with task embeddings sampled from the task prior $p(e)$. Then, we encode this set of transitions into a target task embedding $e^* \sim q(e|c^*)$. By conditioning our meta-trained high-level policy on this encoding, we can rapidly narrow its skill distribution to skills that solve the given target task: $\pi(z|s, e^*)$.

Empirically, we find that this policy is often already able to achieve high success rates on the target task. Note that only very few interactions with the environment for collecting c^* are required for learning a complex, long-horizon and unseen target task with sparse reward. This is substantially more efficient than prior approaches such as SPiRL that require orders of magnitude more target task interactions for achieving comparable performance.

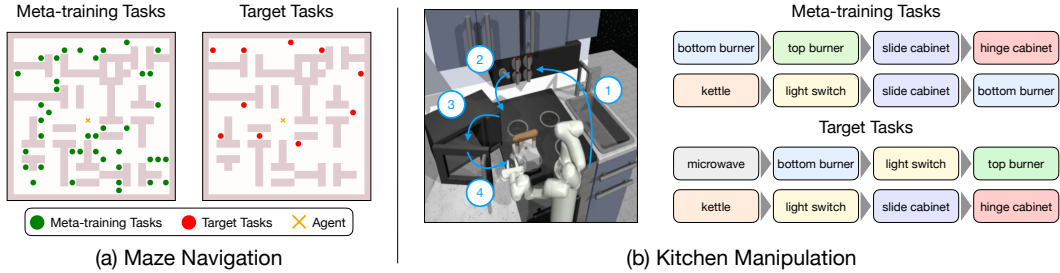


Figure 3: **Environments.** We evaluate our proposed framework in two domains that require the learning of complex, long-horizon behaviors from sparse rewards. These environments are substantially more complex than those typically used to evaluate meta-RL algorithms. (a) **Maze Navigation:** The agent needs to navigate for hundreds of steps to reach unseen target goals and only receives a binary reward upon task success. (b) **Kitchen Manipulation:** The 7DoF agent needs to execute an unseen sequence of four subtasks, spanning hundreds of time steps, and only receives a sparse reward upon completion of each subtask.

To further improve the performance on the target task, we fine-tune the conditioned policy with target task rewards while guiding its exploration with the pre-trained skill prior¹:

$$\max_{\pi} \mathbb{E}_{e^* \sim q(\cdot|e^*)} \left[\sum_t \mathbb{E}_{(s_t, z_t) \sim \rho_{\pi|e^*}} [r_{\mathcal{T}^*}(s_t, z_t) - \alpha D_{\text{KL}}(\pi(z|s_t, e^*), p(z|s_t))] \right]. \quad (5)$$

More implementation details on our method can be found in Section A.

5 EXPERIMENTS

Our experiments aim to answer the following questions: (1) Can our proposed method learn to efficiently solve long-horizon, sparse reward tasks? (2) Is it crucial to utilize offline datasets to achieve this? (3) How can we best leverage the training tasks for efficient learning of target tasks? (4) How does the training task distribution affect the target task learning?

5.1 EXPERIMENTAL SETUP

We evaluate our approach in two challenging continuous control environments: maze navigation and kitchen manipulation environment, as illustrated in Figure 3. While meta-RL algorithms are typically evaluated on tasks that span only a few dozen time steps and provide dense rewards (Finn et al., 2017; Rothfuss et al., 2019; Rakelly et al., 2019; Zintgraf et al., 2020), our tasks require to learn long-horizon behaviors over hundreds of time steps from sparse reward feedback and thus pose a new challenge to meta-learning algorithms.

5.1.1 MAZE NAVIGATION

Environment. This 2D maze navigation domain based on the maze navigation problem in Fu et al. (2020) requires long-horizon control with hundreds of steps for a successful episode and only provides sparse reward feedback upon reaching the goal. The observation space of the agent consists of its 2D position and velocity and it acts via planar, continuous velocity commands.

Offline Dataset & Meta-training / Target Tasks. Following Fu et al. (2020) we collect a task-agnostic offline dataset by randomly sampling start-goal locations in the maze and using a planner to generate a trajectory that reaches from start to goal. Note that the trajectories are not annotated with any reward or task labels (*i.e.* which start-goal location is used for producing each trajectory). To generate a set of meta-training and target tasks, we fix the agent’s initial position in the center of the maze and sample 40 random goal locations for meta-training and another set of 10 goals for target

¹Other regularization distributions are possible during fine-tuning, e.g. the high-level policy conditioned on task prior samples $p(z|s, e \sim p(e))$ or the target task embedding conditioned policy $p(z|s, e^*)$ before finetuning. Yet, we found the regularization with the pre-trained task-agnostic skill prior to work best in our experiments.

tasks. All meta-training and target tasks use the same sparse reward formulation. More details can be found in Section C.1.

5.1.2 KITCHEN MANIPULATION

Environment. The FrankaKitchen environment of Gupta et al. (2019) requires the agent to control a 7-DoF robot arm via continuous joint velocity commands and complete a sequence of manipulation tasks like opening the microwave or turning on the stove. Successful episodes span 300-500 steps and the agent is only provided a sparse reward signal upon successful completion of a subtask.

Offline Dataset & Meta-training / Target Tasks. We leverage a dataset of 600 human-teleoperated manipulation sequences of Gupta et al. (2019) for offline pre-training. In each trajectory, the robot executes a sequence of four subtasks. We then define a set of 23 meta-training tasks and 10 target tasks that in turn require the consecutive execution of four subtasks (see Figure 3 for examples). Note that each task consists of a unique combination of subtasks. More details can be found in Section C.2.

5.2 BASELINES

We compare SiMPL to prior approaches in RL, skill-based RL, meta-RL, and multi-task RL.

- **SAC** (Haarnoja et al., 2018) is a state of the art deep RL algorithm. It learns to solve a target task from scratch without leveraging the offline dataset nor the meta-training tasks.
- **SPiRL** (Pertsch et al., 2020) is a method designed to leverage offline data through the transfer of learned skills. It acquires skills and a skill prior from the offline dataset but does not utilize the meta-training tasks. This investigates the benefits our method can obtain from leveraging the meta-training tasks.
- **PEARL** (Rakelly et al., 2019) is a state of the art off-policy meta-RL algorithm that learns a policy which can quickly adapt to unseen test tasks. It learns from the meta-training tasks but does not use the offline dataset. This examines the benefits of using learned skills in meta-RL.
- **PEARL-ft** demonstrates the performance of a PEARL (Rakelly et al., 2019) model further fine-tuned on a target task using SAC (Haarnoja et al., 2018).
- **Multi-task RL (MTRL)** is a multi-task RL baseline which learns from the meta-training tasks by distilling individual policies specialized in each task into a shared policy, similar to Distal (Teh et al., 2017). Each individual policy is trained using SPiRL by leveraging skills extracted from the offline dataset. Therefore, it utilizes both the meta-training tasks and offline dataset similar to our method. This provides a direct comparison of multi-task learning (MTRL) from the training tasks vs. meta-learning using them (ours).

More implementation details on the baselines can be found in Section B.

5.3 RESULTS

We present the quantitative results in Figure 4 and the qualitative results on the maze navigation domain in Figure 5. In Figure 4, SiMPL demonstrates much better sample efficiency for learning the unseen target tasks compared to all the baselines. Without leveraging the offline dataset and meta-training tasks, SAC is not able to make learning progress on most of the target tasks. While PEARL is first trained on the meta-training tasks, it still achieves poor performance on the target tasks and fine-tuning it (PEARL-ft) does not yield significant improvement. We believe this is because both environments provide only sparse rewards yet require the model to exhibit long-horizon and complex behaviors, which is known to be difficult for meta-RL methods (Mitchell et al., 2021).

On the other hand, by first extracting skills and acquiring a skill prior from the offline dataset, SPiRL’s performance consistently improves with more samples from the target tasks. Yet, it requires significantly more environment interactions than our method to solve the target tasks since the policy is optimized using vanilla RL, which is not designed to learn to quickly learn new tasks. While the multi-task RL (MTRL) baseline first learns a multi-task policy from the meta-training tasks, its sample efficiency is similar to SPiRL on target task learning, which highlights the strength of our proposed method – meta-learning from the meta-training tasks for fast target task learning.

Compared to the baselines, our method learns the target tasks much quicker. Within only a few episodes the policy converges to solve more than 80% of the target tasks in the maze environment and

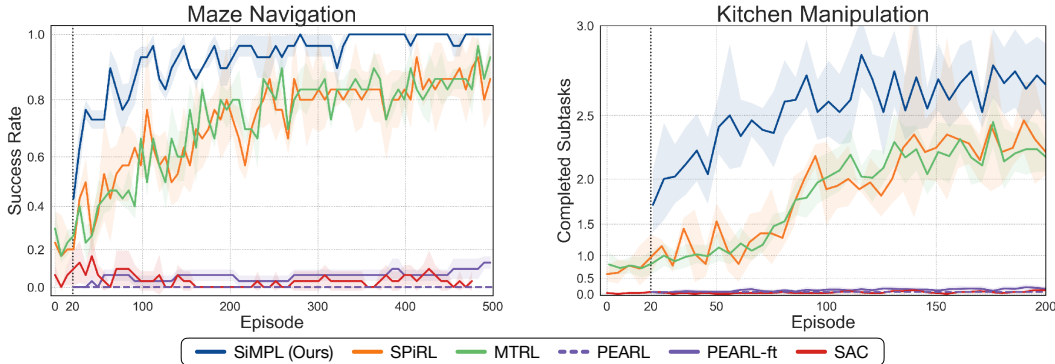


Figure 4: **Target Task Learning Efficiency.** SiMPL demonstrates better sample efficiency compared to all the baselines, verifying the efficacy of meta-learning on long-horizon tasks by leveraging skills and skill prior extracted from an offline dataset. For both the two environments, we train each model on each target task with 3 different random seeds. SiMPL and PEARL-ft first collect 20 episodes of environment interactions (vertical dotted line) for conditioning the meta-trained policy before fine-tuning it on target tasks.

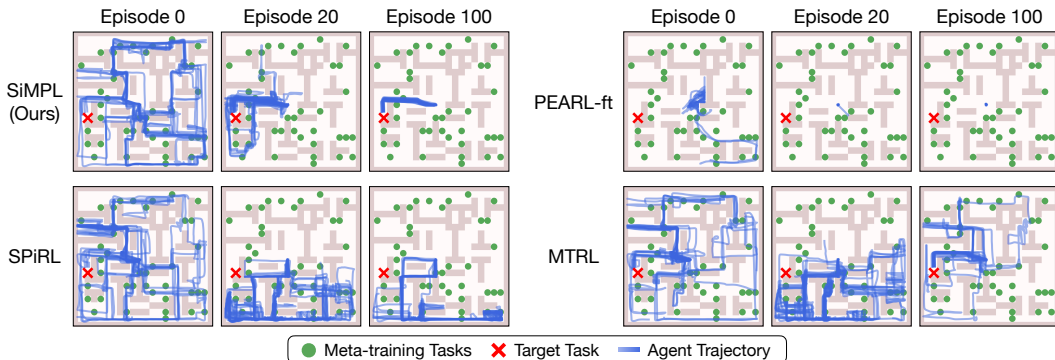


Figure 5: **Qualitative Results.** All the methods that leverage the offline dataset (*i.e.* SiMPL, SPiRL, and MTRL) effectively explore the maze in the first episode. Then, SiMPL converges with much fewer episodes compared to SPiRL and MTRL. In contrast, PEARL-ft is not able to make learning progress.

two out of four subtasks in the kitchen manipulation environment. The prior-regularized fine-tuning then continues to improve performance. The rapidly increasing performance and the overall faster convergence show the benefits of leveraging meta-training tasks in addition to learning from offline data: by first learning to learn how to quickly solve tasks using the extracted skills and the skill prior, our policy can efficiently solve the target tasks.

The qualitative results presented in Figure 5 show that all the methods that leverage the offline dataset (*i.e.* SiMPL, SPiRL, and MTRL) effectively explore the maze in the first episode. Then, SiMPL converges with much fewer episodes compared to SPiRL and MTRL, underlining the effectiveness of meta-training. In contrast, PEARL-ft is not able to make learning progress, justifying the necessity of employing offline datasets for acquiring long-horizon, complex behaviors.

5.4 META-TRAINING TASK DISTRIBUTION ANALYSIS

In this section, we aim to investigate the effect of the meta-training task distribution on our skill-based meta-training and target task learning phases. Specifically, we examine the effect of (1) the number of tasks in the meta-training task distribution and (2) the alignment between a meta-training task distribution and target task distribution. We conduct experiments and analyses in the maze navigation domain. More details on task distributions can be found in Section C.1.

Number of meta-training tasks. To investigate how the number of meta-training tasks affects the performance of our method, we train our method with fewer numbers meta-training tasks (*i.e.* 10 and 20) and evaluate it with the same set of target tasks. The quantitative results presented in Figure 6(a)

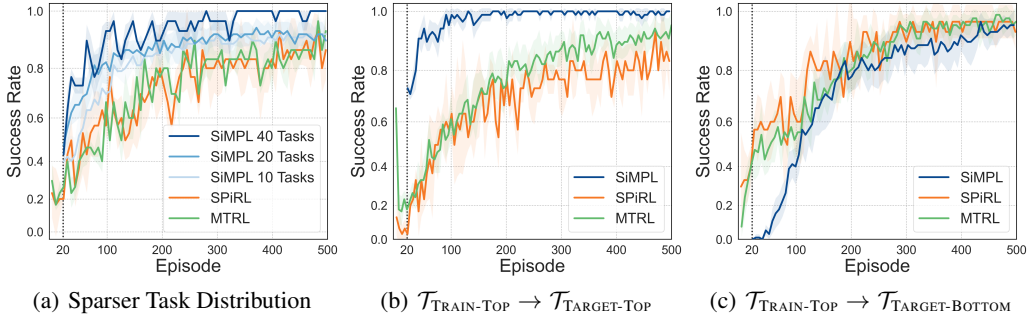


Figure 6: **Meta-training Task Distribution Analysis.** (a) With sparser meta-training task distributions (*i.e.* fewer numbers of meta-training tasks), SiMPL still achieves better sample efficiency compared to SPiRL, highlighting the benefit of leveraging meta-training tasks. (b) When trained on a meta-training task distribution that aligns better with the target task distribution, SiMPL achieves improved performance. (c) When trained on a meta-training task distribution that is mis-aligned with the target tasks, SiMPL yields worse performance. For all the analyses, we train each model on each target task with 3 different random seeds.

suggest that even with sparser meta-training task distributions (*i.e.* fewer numbers of meta-training tasks), SiMPL is still more sample efficient compared to the best-performing baseline (*i.e.* SPiRL).

Meta-train / test task alignment. We aim to examine if a model trained on a meta-training task distribution that aligns better/worse with the target tasks would yield improved/deteriorated performance. To this end, we create biased meta-training / test task distributions: we create a meta-train set by sampling goal locations from only the top 25% portion of the maze ($\mathcal{T}_{\text{TRAIN-TOP}}$). To rule out the effect of the density of the task distribution, we sample 10 (*i.e.* $40 \times 25\%$) meta-training tasks. Then, we create two target task distributions that have good and bad alignment with this meta-training distribution respectively by sampling 10 target tasks from the top 25% portion of the maze ($\mathcal{T}_{\text{TARGET-TOP}}$) and 10 target tasks from the bottom 25% portion of the maze ($\mathcal{T}_{\text{TARGET-BOTTOM}}$).

Figure 6(b) and Figure 6(c) present the target task learning efficiency for models trained with good task alignment (meta-train on $\mathcal{T}_{\text{TRAIN-TOP}}$, learn target tasks from $\mathcal{T}_{\text{TARGET-TOP}}$) and bad task alignment (meta-train on $\mathcal{T}_{\text{TRAIN-TOP}}$, learn target tasks from $\mathcal{T}_{\text{TARGET-BOTTOM}}$), respectively. The results demonstrate that SiMPL can achieve improved performance when trained on a better aligned meta-training task distribution. On the other hand, not surprisingly, SiMPL and MTRL perform slightly worse compared to SPiRL when trained with misaligned meta-training tasks (see Figure 6(c)). This is expected given that SPiRL does not learn from the misaligned meta-training tasks. In summary, from Figure 6, we can conclude that meta-learning from either a diverse task distribution or a better informed task distribution can yield improved performance for our method.

6 CONCLUSION

We propose a skill-based meta-RL method, dubbed SiMPL, that can meta-learn on long-horizon tasks by leveraging prior experience in the form of large offline datasets without additional reward and task annotations. Specifically, our method first learns to extract reusable skills and a skill prior from the offline data. Then, we propose to meta-train a high-level policy that leverages these skills for efficient learning of unseen target tasks. To effectively utilize learned skills, the high-level policy is regularized by the acquired prior. The experimental results on challenging continuous control long-horizon navigation and manipulation tasks with sparse rewards demonstrate that our method outperforms the prior approaches in deep RL, skill-based RL, meta-RL, and multi-task RL. In the future, we aim to demonstrate the scalability of our method to high-DoF continuous control problems on real robotic systems to show the benefits of our improved sample efficiency.

REFERENCES

- Anurag Ajay, Aviral Kumar, Pulkit Agrawal, Sergey Levine, and Ofir Nachum. Opal: Offline primitive discovery for accelerating offline reinforcement learning. In *International Conference on Learning Representations*, 2021.
- OpenAI: Marcin Andrychowicz, Bowen Baker, Maciek Chociej, Rafal Jozefowicz, Bob McGrew, Jakub Pachocki, Arthur Petron, Matthias Plappert, Glenn Powell, Alex Ray, et al. Learning dexterous in-hand manipulation. *The International Journal of Robotics Research*, 2020.
- Yevgen Chebotar, Karol Hausman, Yao Lu, Ted Xiao, Dmitry Kalashnikov, Jake Varley, Alex Irpan, Benjamin Eysenbach, Ryan Julian, Chelsea Finn, et al. Actionable models: Unsupervised offline reinforcement learning of robotic skills. *arXiv preprint arXiv:2104.07749*, 2021.
- Ignasi Clavera, Jonas Rothfuss, John Schulman, Yasuhiro Fujita, Tamim Asfour, and Pieter Abbeel. Model-based reinforcement learning via meta-policy optimization. In *Conference on Robot Learning*, 2018.
- Ignasi Clavera, Anusha Nagabandi, Simin Liu, Ronald S. Fearing, Pieter Abbeel, Sergey Levine, and Chelsea Finn. Learning to adapt in dynamic, real-world environments through meta-reinforcement learning. In *International Conference on Learning Representations*, 2019.
- Sudeep Dasari, Frederik Ebert, Stephen Tian, Suraj Nair, Bernadette Bucher, Karl Schmeckpeper, Siddharth Singh, Sergey Levine, and Chelsea Finn. Robonet: Large-scale multi-robot learning. In *Conference on Robot Learning*, 2019.
- Ron Dorfman, Idan Shenfeld, and Aviv Tamar. Offline meta learning of exploration. In *Neural Information Processing Systems*, 2021.
- Yan Duan, John Schulman, Xi Chen, Peter L Bartlett, Ilya Sutskever, and Pieter Abbeel. RL²: Fast reinforcement learning via slow reinforcement learning. *arXiv preprint arXiv:1611.02779*, 2016.
- Chelsea Finn, Pieter Abbeel, and Sergey Levine. Model-agnostic meta-learning for fast adaptation of deep networks. In *International Conference on Machine Learning*, 2017.
- Justin Fu, Aviral Kumar, Ofir Nachum, George Tucker, and Sergey Levine. D4rl: Datasets for deep data-driven reinforcement learning. *arXiv preprint arXiv:2004.07219*, 2020.
- Shixiang Gu, Ethan Holly, Timothy Lillicrap, and Sergey Levine. Deep reinforcement learning for robotic manipulation with asynchronous off-policy updates. In *IEEE International Conference on Robotics and Automation*, 2017.
- Caglar Gulcehre, Ziyu Wang, Alexander Novikov, Tom Le Paine, Sergio Gómez Colmenarejo, Konrad Zolna, Rishabh Agarwal, Josh Merel, Daniel Mankowitz, Cosmin Paduraru, et al. R1 unplugged: Benchmarks for offline reinforcement learning. *arXiv preprint arXiv:2006.13888*, 2020.
- Abhishek Gupta, Russell Mendonca, YuXuan Liu, Pieter Abbeel, and Sergey Levine. Meta-reinforcement learning of structured exploration strategies. In *Neural Information Processing Systems*, 2018.
- Abhishek Gupta, Vikash Kumar, Corey Lynch, Sergey Levine, and Karol Hausman. Relay policy learning: Solving long-horizon tasks via imitation and reinforcement learning. In *Conference on Robot Learning*, 2019.
- Tuomas Haarnoja, Aurick Zhou, Pieter Abbeel, and Sergey Levine. Soft actor-critic: Off-policy maximum entropy deep reinforcement learning with a stochastic actor. In *International Conference on Machine Learning*, 2018.
- Karol Hausman, Jost Tobias Springenberg, Ziyu Wang, Nicolas Heess, and Martin Riedmiller. Learning an embedding space for transferable robot skills. In *International Conference on Learning Representations*, 2018.

- Irina Higgins, Loic Matthey, Arka Pal, Christopher Burgess, Xavier Glorot, Matthew Botvinick, Shakir Mohamed, and Alexander Lerchner. beta-VAE: Learning basic visual concepts with a constrained variational framework. In *International Conference on Learning Representations*, 2017.
- Jan Humplik, Alexandre Galashov, Leonard Hasenclever, Pedro A Ortega, Yee Whye Teh, and Nicolas Heess. Meta reinforcement learning as task inference. *arXiv preprint arXiv:1905.06424*, 2019.
- Dmitry Kalashnikov, Jacob Varley, Yevgen Chebotar, Benjamin Swanson, Rico Jonschkowski, Chelsea Finn, Sergey Levine, and Karol Hausman. Mt-opt: Continuous multi-task robotic reinforcement learning at scale. *arXiv preprint arXiv:2104.08212*, 2021.
- Diederik P Kingma and Jimmy Ba. Adam: A method for stochastic optimization. In *International Conference on Learning Representations*, 2015.
- Aviral Kumar, Aurick Zhou, George Tucker, and Sergey Levine. Conservative q-learning for offline reinforcement learning. In *Neural Information Processing Systems*, 2020.
- Juho Lee, Yoonho Lee, Jungtaek Kim, Adam Kosior, Seungjin Choi, and Yee Whye Teh. Set transformer: A framework for attention-based permutation-invariant neural networks. In *International Conference on Machine Learning*, 2019.
- Youngwoon Lee, Shao-Hua Sun, Sriram Somasundaram, Edward S Hu, and Joseph J Lim. Composing complex skills by learning transition policies. In *International Conference on Learning Representations*, 2018.
- Sergey Levine, Aviral Kumar, George Tucker, and Justin Fu. Offline reinforcement learning: Tutorial, review, and perspectives on open problems. *arXiv preprint arXiv:2005.01643*, 2020.
- Evan Z Liu, Aditi Raghunathan, Percy Liang, and Chelsea Finn. Decoupling exploration and exploitation for meta-reinforcement learning without sacrifices. In *International Conference on Machine Learning*, 2021.
- Corey Lynch, Mohi Khansari, Ted Xiao, Vikash Kumar, Jonathan Tompson, Sergey Levine, and Pierre Sermanet. Learning latent plans from play. In *Conference on Robot Learning*, 2020.
- Ajay Mandlekar, Yuke Zhu, Animesh Garg, Jonathan Booher, Max Spero, Albert Tung, Julian Gao, John Emmons, Ancht Gupta, Emre Orbay, Silvio Savarese, and Li Fei-Fei. Roboturk: A crowdsourcing platform for robotic skill learning through imitation. In *Conference on Robot Learning*, 2018.
- Josh Merel, Saran Tunyasuvunakool, Arun Ahuja, Yuval Tassa, Leonard Hasenclever, Vu Pham, Tom Erez, Greg Wayne, and Nicolas Heess. Catch & carry: Reusable neural controllers for vision-guided whole-body tasks. *ACM Transactions on Graphics*, 2020.
- Eric Mitchell, Rafael Rafailov, Xue Bin Peng, Sergey Levine, and Chelsea Finn. Offline meta-reinforcement learning with advantage weighting. In *International Conference on Machine Learning*, 2021.
- Anusha Nagabandi, Chelsea Finn, and Sergey Levine. Deep online learning via meta-learning: Continual adaptation for model-based rl. In *International Conference on Learning Representations*, 2019.
- Karl Pertsch, Youngwoon Lee, and Joseph J. Lim. Accelerating reinforcement learning with learned skill priors. In *Conference on Robot Learning*, 2020.
- Karl Pertsch, Youngwoon Lee, Yue Wu, and Joseph J. Lim. Demonstration-guided reinforcement learning with learned skills. In *Conference on Robot Learning*, 2021.
- Vitchyr H Pong, Ashvin Nair, Laura Smith, Catherine Huang, and Sergey Levine. Offline meta-reinforcement learning with online self-supervision. *arXiv preprint arXiv:2107.03974*, 2021.

- Kate Rakelly, Aurick Zhou, Chelsea Finn, Sergey Levine, and Deirdre Quillen. Efficient off-policy meta-reinforcement learning via probabilistic context variables. In *International Conference on Machine Learning*, 2019.
- Jonas Rothfuss, Dennis Lee, Ignasi Clavera, Tamim Asfour, and Pieter Abbeel. ProMP: Proximal meta-policy search. In *International Conference on Learning Representations*, 2019.
- Stefan Schaal, Jan Peters, Jun Nakanishi, and Auke Ijspeert. Learning movement primitives. In Paolo Dario and Raja Chatila (eds.), *Robotics Research*, 2005.
- Archit Sharma, Shixiang Gu, Sergey Levine, Vikash Kumar, and Karol Hausman. Dynamics-aware unsupervised discovery of skills. In *International Conference on Learning Representations*, 2020.
- Noah Y Siegel, Jost Tobias Springenberg, Felix Berkenkamp, Abbas Abdolmaleki, Michael Neunert, Thomas Lampe, Roland Hafner, and Martin Riedmiller. Keep doing what worked: Behavioral modelling priors for offline reinforcement learning. In *International Conference on Learning Representations*, 2020.
- Yee Teh, Victor Bapst, Wojciech M. Czarnecki, John Quan, James Kirkpatrick, Raia Hadsell, Nicolas Heess, and Razvan Pascanu. Distral: Robust multitask reinforcement learning. In *Neural Information Processing Systems*, 2017.
- Hado Van Hasselt, Arthur Guez, and David Silver. Deep reinforcement learning with double q-learning. In *AAAI Conference on Artificial Intelligence*, 2016.
- Risto Vuorio, Shao-Hua Sun, Hexiang Hu, and Joseph J Lim. Toward multimodal model-agnostic meta-learning. *arXiv preprint arXiv:1812.07172*, 2018.
- Risto Vuorio, Shao-Hua Sun, Hexiang Hu, and Joseph J Lim. Multimodal model-agnostic meta-learning via task-aware modulation. In *Neural Information Processing Systems*, 2019.
- Jane X Wang, Zeb Kurth-Nelson, Dhruva Tirumala, Hubert Soyer, Joel Z Leibo, Remi Munos, Charles Blundell, Dharshan Kumaran, and Matt Botvinick. Learning to reinforcement learn. In *Annual Meeting of the Cognitive Science Society (CogSci)*, 2017.
- Yuxiang Yang, Ken Caluwaerts, Atil Iscen, Jie Tan, and Chelsea Finn. Norml: No-reward meta learning. In *International Conference on Autonomous Agents and Multiagent Systems*, 2019.
- Tianhe Yu, Chelsea Finn, Annie Xie, Sudeep Dasari, Tianhao Zhang, Pieter Abbeel, and Sergey Levine. One-shot imitation from observing humans via domain-adaptive meta-learning. *arXiv preprint arXiv:1802.01557*, 2018.
- Tianhe Yu, Aviral Kumar, Rafael Rafailov, Aravind Rajeswaran, Sergey Levine, and Chelsea Finn. Combo: Conservative offline model-based policy optimization. *arXiv preprint arXiv:2102.08363*, 2021.
- Luisa Zintgraf, Kyriacos Shiarli, Vitaly Kurin, Katja Hofmann, and Shimon Whiteson. Fast context adaptation via meta-learning. In *International Conference on Machine Learning*, 2019.
- Luisa Zintgraf, Kyriacos Shiarlis, Maximilian Igl, Sebastian Schulze, Yarın Gal, Katja Hofmann, and Shimon Whiteson. Varibad: A very good method for bayes-adaptive deep rl via meta-learning. In *International Conference on Learning Representations*, 2020.

APPENDIX

Table of Contents

A Implementation Details on Our Method	13
A.1 Model architecture	13
A.2 Training details	14
B Implementation Details on Baselines	14
B.1 SAC	14
B.2 PEARL and PEARL-ft	14
B.3 SPiRL	15
B.4 Multi-task RL (MTRL)	15
C Meta-training Tasks and Target Tasks.	15
C.1 Maze Navigation	15
C.2 Kitchen Manipulation	16

A IMPLEMENTATION DETAILS ON OUR METHOD

In this section, we describe the additional implementation details on our proposed method. The details on model architecture is presented in Section A.1, followed by the training detailed described in Section A.2.

A.1 MODEL ARCHITECTURE

We describe the details on our model architecture in this section.

A.1.1 SKILL PRIOR

We followed architecture and learning procedure of Pertsch et al. (2020) for learning a low-level skill policy and a skill prior. Please refer to Pertsch et al. (2020) for more details on the architectures for learning skills and skill priors from offline datasets.

A.1.2 TASK ENCODER

Following Rakelly et al. (2019), our task encoder is a permutation invariant neural network. Specifically, we adopt Set Transformer (Lee et al., 2019) that consists of layers $[2 \times \text{ISAB}_{32} \rightarrow \text{PMA}_1 \rightarrow 3 \times \text{MLP}]$ for expressive and efficient set encoding. All the hidden layers are 128-dimensional and all attention layers have 4 attention heads. The encoder takes a set of high-level transitions as input, where each transition is a vector concatenation of high-level transition tuple. The output of the encoder is (μ_e, σ_e) which are the parameters of Gaussian task posterior $p(e|c) = \mathcal{N}(e; \mu_e, \sigma_e)$. We varied task vector dimension $\dim(e)$ depends on task distribution complexity. $\dim(e) = 10$ for Kitchen Manipulation, $\dim(e) = 6$ for Maze Navigation with 40 meta-training tasks, and $\dim(e) = 5$, otherwise.

A.1.3 POLICY

We parameterize our policy with neural network. We employed 4-layer MLPs with 256 hidden units for Maze Navigation, and 6-layer MLPs with 128 hidden unit for Kitchen Manipulation experiment. Instead of direct parameterization of policy, the network output is added to skill-prior to make learning more stable. Specifically, the policy network takes concatenation of (s, e) as input, and then outputs residual parameters $(\mu_z, \log \sigma_z)$ to skill-prior distribution $p(z|s) = \mathcal{N}(z|\mu_p, \sigma_p)$. Resulting distribution by this residual parameterization is $\pi(z|s) = \mathcal{N}(z|\mu_p + \mu_z, \exp(\log \sigma_p + \log \sigma_z))$

A.1.4 CRITIC

The critic network takes concatenation of s , e , and skill z as input and outputs an estimation of task-conditioned Q-value $Q(s, z, e)$. We employ double Q networks (Van Hasselt et al., 2016) to mitigate Q-value overestimation. The architecture of critic follows the policy.

A.2 TRAINING DETAILS

For all the network updates, we used Adam optimizer (Kingma & Ba, 2015) with a learning rate of $3e-4$, $\beta_1 = 0.9$, and $\beta_2 = 0.999$. We describe the training details of the skill-based meta-training phase in Section A.2.1 and the target task learning phase Section A.2.2.

A.2.1 SKILL-BASED META-TRAINING

Our meta-training procedure is similar to the procedure adopted in (Rakelly et al., 2019). Encoder and critics networks are updated to minimize MSE between Q-value prediction and target Q value. Policy network is updated to optimize Equation 4 without updating the encoder network. All network are updated with the average gradients of 20 randomly sampled tasks. Each batch of gradients is computed from 1024 and 256 transitions for Maze Navigation and Kitchen Manipulation experiment, respectively. We train our models for 10000, 18000, and 16000 episodes for the Maze Navigation experiments with 10, 20, 40 meta-training tasks, respectively, and 3450 episodes for Kitchen Manipulation.

As stated in Section 4.2, we apply different regularization coefficients depending on the size of the conditioning transitions. In Maze Navigation experiment, we set target KL divergence to 0.1 for batch that is conditioned on size 4 transitions and 0.4 for batch conditioned on size 8192 transitions. In Kitchen Manipulation experiment, we set target KL divergence to 0.4 for bath conditioned with a size 1024 transitions while KL coefficient for batch conditioned on size 2 transitions is fixed to 0.3.

A.2.2 TARGET TASK LEARNING

We initialize the Q function and the auto-tuning value α with the values that learned in the skill-based meta-training phase. The policy is initialized after observing and encoding 20 episodes obtained from the task unconditioned policy rollouts. For the target task learning phase, the target KL δ is 1 for Maze Navigation, and 2 for Kitchen Manipulation experiments. To compute a gradient step, 256 high-level transitions are sampled from a replay buffer with size 20000. Note that we used same setup for baselines that uses SPiRL fine-tuning (SPiRL and MTRL).

B IMPLEMENTATION DETAILS ON BASELINES

In this section, we describe the additional implementation details on producing the results of the baselines.

B.1 SAC

The SAC (Haarnoja et al., 2018) baseline learns to solve a target task from scratch without leveraging the offline dataset nor the meta-training tasks.

We initialize α to 0.1 and set the target entropy to $\mathcal{H} = -\dim(\mathcal{A})$. To compute a gradient step, 4096 and 1024 environment transitions are sampled from a replay buffer for Maze Navigation and Kitchen Navigation experiments, respectively.

B.2 PEARL AND PEARL-FT

PEARL (Rakelly et al., 2019) learns from the meta-training tasks but does not use the offline dataset. Therefore, we directly train PEARL models on the meta-training tasks without the phase of learning from offline datasets. We use gradients averaged from 20 randomly sampled tasks where each task gradient is computed by batch sampled from a per-task buffer. The target entropy is set to $\mathcal{H} = -\dim(\mathcal{A})$ and α is initialized to 0.1.

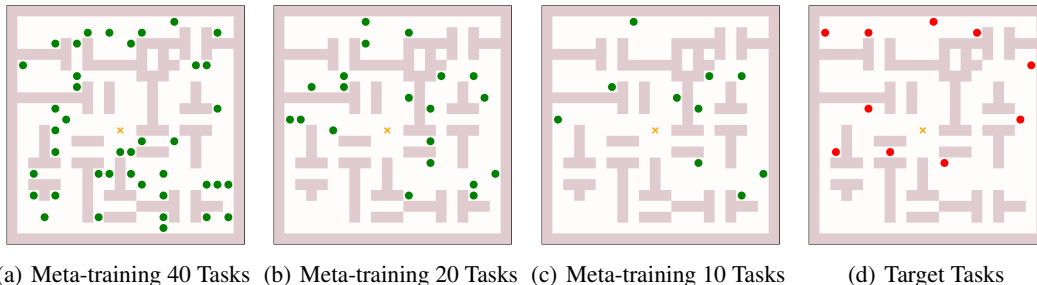


Figure 7: **Maze Meta-training and Target Task Distributions.** The green dots represent the goal locations of meta-training tasks and the red dots represent the goal locations of target tasks. The yellow cross represent the initial location of the agent.

While the method proposed in Rakelly et al. (2019) does not fine-tune on target/meta-testing tasks, we extend PEARL to be fine-tuned on target tasks for a fair comparison, called PEARL-ft. Since PEARL does not use learned skills or a skill prior, the target task learning of PEARL is simply running SAC with task-encoded initialization. Similar to the target task learning of our method, we initialize the Q function and entropy coefficient α to the value learned during the meta-training phase. Also, we initialize the policy to the task conditioned policy after observing 20 episodes of experience from the task unconditioned policy rollouts. The hyperparameters used for fine-tuning are the same as SAC.

B.3 SPiRL

Similar to our method, we initialize the high-level policy to skill-prior while fixing low-level policy for target task learning for SPiRL. α is initialized to 0.01 and we use the same hyperparameters for the SPiRL models as our method.

B.4 MULTI-TASK RL (MTRL)

Inspired by Distral (Teh et al., 2017), our multi-task RL baseline is designed to first learn a set of individual policies, where each of them is specialized in one task; then, a shared/multi-task policy is learned by distilling the individual policies. Since it is inefficient to learn an individual policy from scratch, we learn each individual policy using SPiRL with learned skills and a skill prior. Then, we distill the individual policies using the following objective :

$$\max_{\pi_0} \mathbb{E}_{\mathcal{T} \sim p_{\mathcal{T}}} \left[\sum_t \mathbb{E}_{(s_t, z_t) \sim \rho_{\pi_0}} [r_{\mathcal{T}}(s_t, z_t) - \alpha D_{\text{KL}}(\pi_0(z|s_t, e), p(z|s_t))] \right]. \quad (6)$$

We use the same setup for α as our method, where α is auto-tuned to satisfy a target KL, $\delta = 0.1$ for Maze Navigation and $\delta = 0.2$ for Kitchen Manipulation.

While the target task learning phase for MTRL is similar to ours, except that MTRL is not initialized with a meta-trained Q function and learned α .

C META-TRAINING TASKS AND TARGET TASKS.

In this section, we present the meta-training tasks and target tasks used in the maze navigation domain and the kitchen manipulation domain.

C.1 MAZE NAVIGATION

The meta-training tasks and target tasks are visualized in Figure 7 and Figure 8.

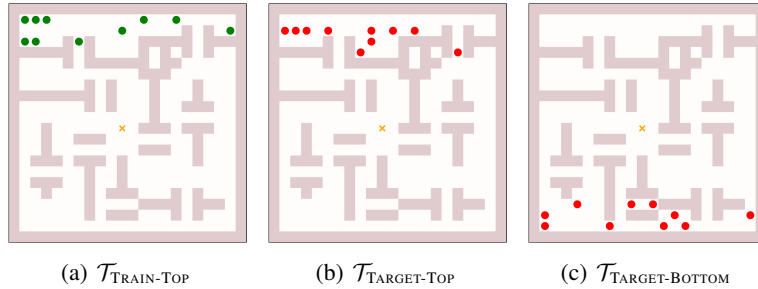


Figure 8: **Maze Meta-training and Target Task Distributions for Meta-training Task Distribution Analysis.** The green dots represent the goal locations of meta-training tasks and the red dots represent the goal locations of target tasks. The yellow cross represent the initial location of the agent.

C.2 KITCHEN MANIPULATION

The meta-training tasks are:

- microwave→kettle→bottom burner→slide cabinet
- microwave→bottom burner→top burner→slide cabinet
- microwave→top burner→light switch→hinge cabinet
- kettle→bottom burner→light switch→hinge cabinet
- microwave→bottom burner→hinge cabinet→top burner
- kettle→top burner→light switch→slide cabinet
- microwave→kettle→slide cabinet→bottom burner
- kettle→light switch→slide cabinet→bottom burner
- microwave→kettle→bottom burner→top burner
- microwave→kettle→slide cabinet→hinge cabinet
- microwave→bottom burner→slide cabinet→top burner
- kettle→bottom burner→light switch→top burner
- microwave→kettle→top burner→light switch
- microwave→kettle→light switch→hinge cabinet
- microwave→bottom burner→light switch→slide cabinet
- kettle→bottom burner→top burner→light switch
- microwave→light switch→slide cabinet→hinge cabinet
- microwave→bottom burner→top burner→hinge cabinet
- kettle→bottom burner→slide cabinet→hinge cabinet
- bottom burner→top burner→slide cabinet→light switch
- microwave→kettle→light switch→slide cabinet
- kettle→bottom burner→top burner→hinge cabinet
- bottom burner→top burner→light switch→slide cabinet

The target tasks are:

- microwave→bottom burner→light switch→top burner
- microwave→bottom burner→top burner→light switch
- kettle→bottom burner→light switch→slide cabinet
- microwave→kettle→top burner→hinge cabinet
- kettle→bottom burner→slide cabinet→top burner
- kettle→light switch→slide cabinet→hinge cabinet

- kettle→bottom burner→top burner→slide cabinet
- microwave→bottom burner→slide cabinet→hinge cabinet
- bottom burner→top burner→slide cabinet→hinge cabinet
- microwave→kettle→bottom burner→hinge cabinet