

# ChartAnchor: Chart Grounding with Structural-Semantic Fidelity and Data Recovery

Anonymous ACL submission

## Abstract

Recent advances in multimodal large language models (MLLMs) highlight the need for benchmarks that rigorously evaluate structured chart comprehension. Chart grounding refers to the bidirectional alignment between a chart’s visual appearance and the structured semantics. This task requires models to produce a symbolic specification that faithfully captures the chart’s visual and structural intent, while also recovering the underlying tabular data with precise values and relationships. Chart grounding directly reflects a model’s capabilities in numerical reasoning, multimodal alignment, and structural reconstruction, and has several important applications in real-world scenarios. Existing benchmarks, constrained by narrow chart diversity, isolated tasks, and incomplete evaluation frameworks, fail to holistically assess grounding. To address this, we propose ChartAnchor, a comprehensive benchmark of 8k+ chart-table-code triples spanning 30 chart types drawn from diverse real-world and augmented sources. ChartAnchor introduces two complementary tasks: chart-to-code generation and controlled chart-to-table reconstruction, enabling cross-validation of visual and numerical fidelity. A multi-level evaluation framework integrates semantic validation, stylistic analysis, and perceptual metrics to assess both structural and content-level correctness. Extensive experiments on MLLMs reveal critical limitations in numerical precision and code synthesis, emphasizing the need for structured reasoning beyond surface-level perception. By unifying symbolic and data-driven grounding, ChartAnchor establishes a rigorous foundation for chart grounding, offering meaningful insights for advancing MLLMs in scientific, financial, and industrial domains.

## 1 Introduction

“A picture is worth a thousand words.” Charts exemplify this principle by converting complex datasets into intuitive visual representations, enabling rapid

and effective communication of quantitative insights. As a result, data visualizations are essential tools across domains such as science, finance, journalism, and public policy. With the rise of multimodal large language models (MLLMs), there is increasing interest in extending their capabilities to understand and reason about charts—by jointly interpreting visual features and underlying symbolic structures.

One of the core capabilities of MLLMs in chart understanding and reasoning lies in the challenge of chart grounding—aligning a chart’s visual presentation (marks, axes, layout, colours, chart type) with its structured semantics (tabular data, scales). A grounding model must therefore (i) recover the exact data values from the image (chart  $\rightarrow$  table) and (ii) capture the visual–structural encoding that turns those values into graphics (chart  $\rightarrow$  code). Although such structural encodings could be summarised in natural language, we formalise them as executable plotting code: code provides an unambiguous, machine-verifiable specification of marks, scales, and layout, whereas free-text descriptions are often underspecified and cannot guarantee identical rendering. Mastery of both tasks evidences genuine numerical reasoning, spatial-layout comprehension, and multimodal alignment.

Chart grounding has significant applications in real-world scenarios. Fundamental use cases include the extraction of numerical values from charts for in-depth data analysis, as well as the regeneration of chart code to facilitate the creation of similar visualizations using new data. More importantly, chart grounding enables MLLMs to develop a comprehensive understanding of charts, providing a foundation for more advanced tasks. Potential applications include: (1) chat-based chart modification, in which users issue natural language instructions to alter a chart’s visual presentation or underlying data; (2) chart-grounded retrieval, where detailed chart code and data derived from

charts can be indexed for downstream tasks such as retrieval-augmented generation (RAG); and (3) multi-chart reasoning, where grounding information from multiple charts and natural language instructions are integrated to support complex reasoning tasks. Therefore, it is crucial to assess the chart grounding capabilities of MLLMs—a important dimension that has not yet been fully explored.

While recent chart-related benchmarks such as visual QA (e.g., ChartQA(Masry et al., 2022), PlotQA(Methani et al., 2020)) and the summarization (e.g., Chart-to-Text(Kantharaj et al., 2022b), ChartSumm (Rahman et al., 2023)) have advanced chart understanding, they evaluate only unstructured outputs—offering limited insight into a model’s ability to recover symbolic or structured content. Tasks like chart-to-table and chart-to-code begin to address structured aspects, but each only tells part of the story. Chart-to-table benchmarks assess data recovery but ignore style and structure. Conversely, chart-to-code (e.g. ChartMimic(Yang et al., 2024b), Plot2Code(Wu et al., 2024a)) benchmarks are predominantly focus on visual appearance, including layout, styling, and chart-surface text. While they may assess textual accuracy on the chart surface, these benchmarks still judge success primarily through visual similarity and do not enforce consistency with the underlying structured data, which poses serious risks in data-sensitive scenarios.

Critically, most tasks in chart understanding are evaluated in isolation. This fragmented approach allows models to exploit superficial shortcuts: for instance, question-answering systems may guess answers based solely on surface-level cues, without genuinely interpreting the underlying chart structure. While code-generation models may reproduce a chart’s appearance while silently altering the underlying data. Without unified evaluation, such partial successes can mask critical failures. Compounding the issue, existing benchmarks are limited in scope — they cover only a narrow range of chart types, exclude domain-specific formats, and depend on a single plotting library. This narrow design fails to capture the diversity of real-world visualizations and lacks robust, comprehensive evaluation metrics.

To bridge these gaps, we propose ChartAnchor, a large-scale benchmark specifically designed for comprehensive chart grounding. It comprises 8,068 chart–table–code triples spanning 30 diverse chart types, sourced from over 6,533 real-world exam-

ples manually collected by us, along with 1,535 augmented instances derived from existing datasets. The images and corresponding code are drawn from a selection of popular plotting libraries, reflecting diverse visual styles and implementation patterns found in real-world settings. Crucially, it introduces two complementary tasks designed to probe different facets of grounding. The first task, Chart-to-Code Generation, requires the model to synthesize executable Python code use indicated plotting library that replicates a given chart. This assesses the model’s understanding of stylistic and structural components—such as axis configuration, data-to-mark mapping, and layout decisions—while implicitly requiring correct data recovery. The second task, Controlled Chart-to-Table Reconstruction, focuses explicitly on data accuracy: given column headers, the model is required to extract the tabular data from the chart image, isolating numerical precision and structural alignment. By providing headers, the task eliminates label ambiguity and allows for a more focused evaluation of data fidelity. Beyond task design, ChartAnchor introduces a four-dimensional evaluation framework tailored to assessing and guiding the development of MLLMs for chart grounding and understanding. It provides the first unified diagnostic system that jointly evaluates functional validity (execution pass rate), visual rigor (verification of chart type, color, text, and layout), semantic data fidelity (structured tuple matching), and perceptual consistency (CLIP-based semantic alignment). Rather than relying on limited or isolated metrics, this framework enables comprehensive assessment of both code-level reasoning and data-level understanding, laying a foundation for building multimodal models that integrate computational precision with visual and semantic coherence.

## 2 Related Work

**MLLMs.** Proprietary pioneers, notably Claude-Sonnet-4 (Anthropic, 2025), GPT-5 (OpenAI, 2025), and Gemini-2.5-Pro (Comanici et al., 2025), have unlocked potential for addressing complex realistic applications. Concurrently, the open-source community has released diverse high-quality models. This includes prominent series like QwenVL (Yang et al., 2025) and InternVL (Zhu et al., 2025), alongside models such as MiMo-VL (Xiaomi and Team, 2025), GLM-4V (GLM et al., 2024a), and Deepseek-VL (Lu et al., 2024). Together, they

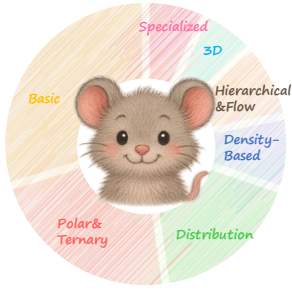


Figure 1: Chart Type Distribution in ChartAnchor.

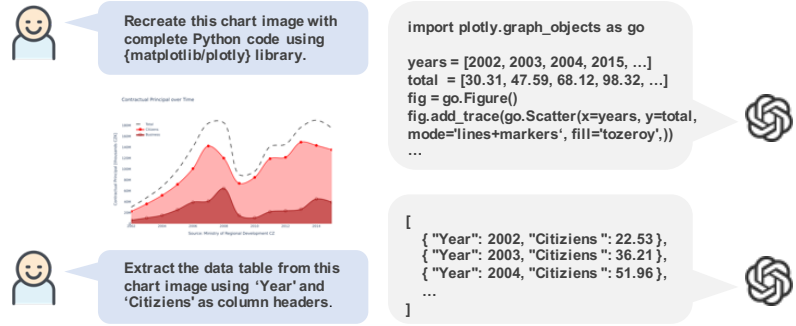


Figure 2: Illustration of our chart-to-code generation task and controlled chart-to-table reconstruction task.

188 significantly advance the field of visual-textual un-  
 189 derstanding.

190 **Chart Benchmark.** The growing importance of  
 191 chart comprehension in multimodal reasoning has  
 192 driven the development of numerous benchmarks.  
 193 Existing datasets target distinct capabilities, rang-  
 194 ing from summarization (Kantharaj et al., 2022b;  
 195 Rahman et al., 2023) and VQA (Masry et al., 2022;  
 196 Methani et al., 2020; Zhu et al., 2024) to code  
 197 generation (Yang et al., 2024b; Wu et al., 2024a;  
 198 Si et al., 2024). Although ChartBench (Xu et al.,  
 199 2023) and ChartX (Xia et al., 2024) move beyond  
 200 isolated tasks by incorporating diverse reasoning  
 201 challenges, they fail to unify visual understanding  
 202 with structured semantic outputs. Moreover, exist-  
 203 ing datasets are limited by their diversity in chart  
 204 types, fixed rendering libraries, and rigid metrics.

205 In contrast to existing benchmarks, we introduce  
 206 ChartAnchor, a benchmark that formalizes chart  
 207 grounding—a unified task mapping visual inputs  
 208 to both executable code and tabular data. ChartAn-  
 209 chor bridges bridging chart-to-code generation and  
 210 controlled table extraction within a single frame-  
 211 work. It features 30 diverse chart types and over  
 212 8k+ instances rendered via multiple libraries, pro-  
 213 viding rich image–table–code tuples for robust eval-  
 214 uation.

### 215 3 The ChartAnchor Benchmark

216 ChartAnchor evaluates chart grounding via chart-  
 217 to-code generation and controlled table recon-  
 218 struction. We construct a diverse corpus of  
 219 chart–table–code triplets from existing and real-  
 220 world sources (distribution in Fig. 1). Our pipeline  
 221 integrates parametric generation with augmenta-  
 222 tion, followed by a rigorous hybrid filtering process  
 223 to ensure high data quality and semantic fidelity.

### 224 3.1 Task Definitions

225 As illustrated in Fig. 2, we define two core tasks  
 226 grounded in our chart–table–code triplets:

227 **Chart-to-Code Generation.** This task requires  
 228 generating executable Python code from a chart  
 229 image  $I$ . The model must produce a valid script  
 230 that accurately reconstructs visual and structural  
 231 elements (e.g., chart type, data, layout, and style).  
 232 This assesses capabilities in visual abstraction and  
 233 symbolic reasoning, demanding output that is both  
 234 syntactically correct and semantically faithful to  
 235 the input.

236 **Controlled Chart-to-Table Reconstruction.**  
 237 This task recovers tabular data under constrained  
 238 header supervision. Given an image  $I$  and head-  
 239 ers  $\mathcal{H} = \{h_1, \dots, h_n\}$ , the model generates a ta-  
 240 ble  $\mathcal{T} = [r_1, \dots, r_m]$  aligning numerical values to  
 241 corresponding headers. The inclusion of headers  
 242 removes label ambiguity, enabling a more targeted  
 243 and reliable evaluation of data fidelity.

### 244 3.2 Data Collection

245 This section presents the data collection pipeline  
 246 for ChartAnchor, which comprises 8,068 samples:  
 247 1,535 (19%) augmented from existing datasets and  
 248 6,533 (81%) curated from real-world sources. De-  
 249 tailed procedures are provided in Appendix A.

#### 250 3.2.1 Data Source

251 As illustrated in Fig 3, we collect a diverse set of  
 252 chart–table–code triplets from two main sources:

- 253 • **Existing datasets.** We leverage chart–table pairs  
 254 from PlotQA (Methani et al., 2020), DVQA  
 255 (Kafle et al., 2018), FigureQA (Kahou et al.,  
 256 2017), and Vistext (Tang et al., 2023). Given  
 257 the absence of original code, we synthesize plot-  
 258 ting scripts from metadata, applying systematic

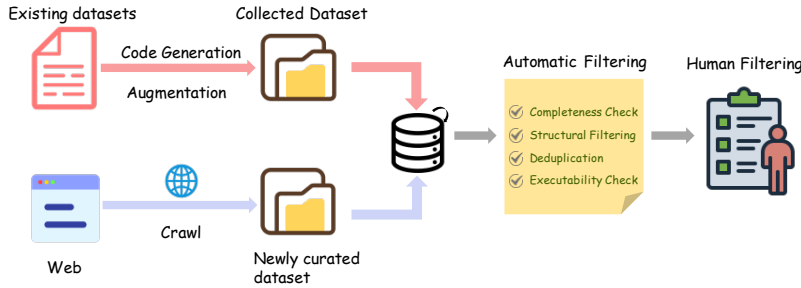


Figure 3: Illustration of the Data Collection Pipeline.

Statistics	Value
<b>Chart Images</b>	
Total Charts	8,068
Avg. Width	3,346
Avg. Height	2,266
Aspect Ratio	1.43
Brightness Std	42.35
Entropy	1.41
<b>Python Code</b>	
Mean Chars	1,469
Mean Tokens	627.67
<b>Table</b>	
Mean Rows	20.35
Mean Cols	3.05

Table 1: Dataset statistics.

Type Num	Scatterpolar 653	Scatter3d 223	Line3d 62	Pie 700	Barpolar 350	Mesh3d 103	Violin 214	Line 617	Histogram2d 174	Bar 659
Type Num	Box 423	Scatterternary 142	Waterfall 111	Heatmap 372	Scatter 675	Cone 44	Surface 84	Histogram 482	Carpet 23	Treemap 121
Type Num	Parcoords 71	Funnelarea 97	Funnel 175	Sankey 231	Candlestick 116	Contour 246	Sunburst 283	Histogram2dcontour 142	Areachart 425	Ohlc 50

Table 2: Chart counts across types.

259 augmentations to visual and semantic attributes  
 260 to ensure diversity and mitigate leakage.

- 261 • **Newly curated dataset.** We curate a large collection  
 262 of charttable-code triples from publicly web  
 263 sources, where charts are created and contributed  
 264 by real users across a wide range of domains.

### 265 3.2.2 Code Generation and Augmentation for 266 Existing Datasets.

267 To address the lack of source code in existing chart  
 268 datasets, we propose a parametric pipeline that  
 269 translates chart metadata into executable plotting  
 270 scripts. The pipeline consists of three main stages:  
 271 semantic mapping of chart elements to primitives  
 272 in visualization libraries, parameterization of vi-  
 273 sual attributes such as colors, fonts, and layout, and  
 274 systematic augmentation through controlled style  
 275 variations. These augmentations include changes  
 276 to color schemes, marker types, axis scales, legend  
 277 positions, font settings, and label orientations.

### 278 3.2.3 Filtering.

279 Our filtering process consists the following two  
 280 stages, more details are in Appendix A.3.

281 **Automated Filtering.** To ensure data fidelity,  
 282 we implement a four-stage pipeline: (a) *Completeness*,  
 283 pruning incomplete data triples; (b) *Structural*  
 284 *Filtering*, excluding unstructured formats such as  
 285 rasterized tables or maps; (c) *Deduplication*, re-  
 286 moving redundancies via exact matching of com-  
 287 pact statistical signatures; and (d) *Executability*,  
 288 discarding scripts that trigger runtime errors or ren-  
 289 dering failures.

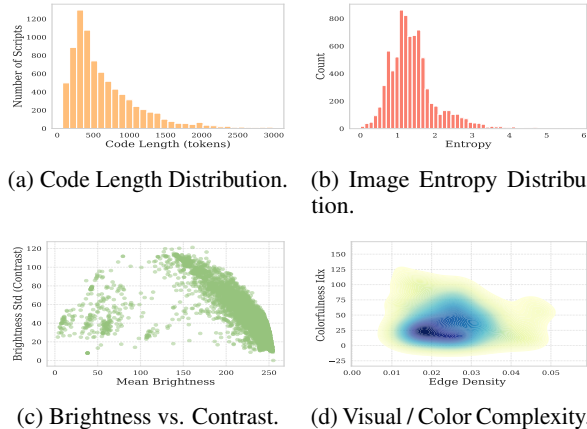


Figure 4: Chart-level visual statistics.

290 **Human Filtering.** We enforced rigorous qual-  
 291 ity control through a double-blind review process  
 292 involving experts proficient in deep learning and  
 293 data visualization. Samples were grouped by chart  
 294 type and filtered within each group to ensure con-  
 295 sistency across families. Independent reviewers  
 296 evaluated the triples based on a standardized rubric  
 297 for semantic accuracy, visual clarity, and stylistic  
 298 diversity, with discrepancies resolved by a third  
 299 adjudicator to guarantee high annotation reliability.

### 300 3.3 Dataset Analysis

301 Tab. 1 and Fig. 4 summarize the structural and vi-  
 302 sual diversity of ChartAnchor: 8,068 charts with a  
 303 range of resolutions, averaging at 3,346×2,266px,  
 304 brightness variability ( $\sigma = 42.35$ ), and entropy ( $\mu =$   
 305 1.41). Code length spans from concise to complex  
 306 scripts (Fig. 4a), while visual metrics show mod-  
 307 erate entropy (Fig. 4b), diverse brightness/contrast

Dataset	Types	Test Set	Input Format	Output Format	Multi-task Eval	Visual	Open Source	Plot Library	Data Eval	Full Ground
<b>Chart Benchmarks</b>										
ChartQA(Masry et al., 2022)	3	10k	I+NL	NL	✓	✓	✓	-	-	✓
PlotQA(Methani et al., 2020)	3	34k	I+NL	NL	✓	✓	✓	-	-	✓
Chart-to-text(Kancharaj et al., 2022b)	6	44k	I+NL	NL	✓	✓	✓	-	-	✓
OpenCQA(Kancharaj et al., 2022a)	5	1.2k	I+NL	NL	✓	✓	✓	-	-	✓
ChartSumm(Rahman et al., 2023)	3	84k	I+NL	NL	✓	✓	✓	-	-	✓
Charxiv(Wang et al., 2024)	18	1.32k	I+NL	NL	✓	✓	✓	-	-	✓
MMC(Liu et al., 2023)	6	2k	I+NL	NL	✓	✓	✓	-	-	✓
ChartX(Xia et al., 2024)	18	6k	I+NL	NL	✓	✓	✓	-	-	✓
ChartBench(Xu et al., 2023)	9	2.1k	I+NL	NL	✓	✓	✓	-	-	✓
<b>Code Generation Benchmarks</b>										
HumanEval(Chen et al., 2021)	-	164	Code	Code	✓	-	✓	-	-	-
MBPP(Austin et al., 2021)	-	500	NL+Code	Code	✓	-	✓	-	-	-
MMCode(Li et al., 2024b)	-	263	I+NL	Code	✓	-	✓	-	-	-
MatPlotBench(Yang et al., 2024c)	13	100	NL	Code	✓	✓	✓	Mixture	✓	✓
Plot2Code(Wu et al., 2024a)	15	132	I+NL	Code	✓	✓	✓	Singal	✓	✓
ChartMimic(Yang et al., 2024b)	22	4.8k	I+NL	Code	✓	✓	✓	Singal	✓	✓
Design2Code(Si et al., 2024)	-	484	I+NL	Code	✓	✓	✓	Singal	✓	✓
<b>ChartAnchor</b>	30	8.1k	I+NL	Code+NL	✓	✓	✓	Mixture	✓	✓

Table 3: Comparison of benchmarks for chart understanding and code generation. “I” = image, “NL” = natural language. “Visual” assesses unannotated chart reasoning. “Plot Library” denotes the use of multiple plotting libraries in the chart-to-code task, while “Data Eval” indicates whether data fidelity is evaluated within the chart-to-code task.

(Fig. 4c), and broad color-structural distributions (Fig. 4d), reflecting its real-world relevance by a balance between informativeness and realism. Token counts are computed using the GPT-4 tokenizer for tokenization.

As detailed in Tab. 2, ChartAnchor encompasses 30 visualization families. Beyond canonical 2D plots, it covers diverse categories including advanced 3D charts, hierarchical diagrams, polar variants, and financial charts. The distribution mimics realistic usage patterns, balancing frequent types (e.g., *bar*, *line*) with long-tail complex charts. By integrating curated benchmarks with real-world code, ChartAnchor incorporates diverse plotting libraries (e.g., Matplotlib, Plotly) and styling idioms, establishing a robust benchmark for MLLM chart grounding. Detailed statistics and visual examples are provided in Appendices B and G.

### 3.4 Comparison with Other Benchmarks

Table 3 presents a comprehensive comparison between our proposed benchmark and a wide range of existing datasets related to chart understanding and code generation.

Early benchmarks (e.g., ChartQA, PlotQA, Chart-to-Text) focus on NL tasks like QA and summarization, without structured protocols to evaluate bidirectional alignment between chart visuals and their underlying data or specifications. More recent multi-task datasets such as ChartArxiv and ChartBench broaden the scope, yet still omit code-based grounding, limiting their ability to assess executable understanding of visual semantics.

Code generation benchmarks like HumanEval and MBPP target text-to-code synthesis and lack visual input, making them unsuitable for evaluating multimodal alignment. Conversely, multimodal

datasets like Plot2Code and ChartMimic introduce image-to-code tasks but fail to explicitly assess numerical fidelity or data reconstruction.

In contrast, ChartAnchor is explicitly designed to evaluate comprehensive chart grounding. It uniquely integrates the following features: (1) High diversity with 30 chart types and multiple plotting libraries to support varied symbolic mappings; (2) Fidelity checks for both stylistic rendering and precise data recovery; (3) Support for unannotated chart images to facilitate unsupervised visual reasoning; (4) Chart–table–code supervision for rigorous evaluation of symbolic, visual, and structural alignment.

## 4 Evaluation Metrics

While existing chart-to-code benchmarks typically rely on basic metrics such as execution success or superficial visual similarity, they fail to capture semantic fidelity, particularly the correctness of underlying chart data. To address this, we introduce a multi-level evaluation framework that jointly examines the functional correctness, visual integrity, and data faithfulness of model outputs. This enables more precise assessment of chart grounding performance in real-world scenarios.

**Functional Validity.** Pass Rate measures the proportion of model outputs that execute or parse without errors—i.e., valid chart-rendering code or well-formed tables—indicating baseline reliability.

**Visual Structure Consistency.** To go beyond functional success, we perform fine-grained evaluation of visual structure through four key aspects extracted directly from the rendered chart objects:

1) *Textual Components Match.* We extract textual components (titles, axis labels, legends, annotations) and compare against reference charts to verify semantic and positional consistency.

2) *Color Fidelity*. We quantify perceptual color differences using the CIEDE2000 (Sharma et al., 2005) metric in the CIE Lab color space, which aligns with human vision sensitivity. This evaluation covers both static elements and dynamic color mappings. For multi-color comparisons, we apply the Hungarian algorithm to optimally pair generated and reference colors, minimizing the total perceptual deviation ( $\Delta E_{00}$ ) across matched pairs. This ensures semantic alignment of color associations while preserving numerical fidelity.

3) *Chart Type Identification*. Chart types indicate the structural intent of a visualization. We determine the type distribution for both generated and reference charts by identifying the type of each visual element, and measure accuracy through distributional comparison.

4) *Layout Alignment*. We evaluate the presence, number, size, and arrangement of subplots to ensure structural correctness in multi-panel charts.

**Semantic Data Fidelity.** To evaluate whether models can faithfully recover the underlying chart data, we introduce *data-level fidelity metric* for both *chart-to-code* and *controlled chart-to-table* tasks.

In the *chart-to-code*, we first parse the generated figure objects and dispatch them to type-specific extractors  $\text{Extract}_T$ , where each  $T \in \mathcal{T}$  corresponds to a supported chart type. Each extractor retrieves the relevant data fields—such as  $(x, y)$  for line or  $(x, \text{low}, \text{high}, \text{open}, \text{close})$  for candlestick charts—and formats each data point as a normalized tuple  $\tau_i = (n, x_i, y_i, \dots)$ , where  $n$  is the trace name and the remaining elements are type-specific field values. The final structured form is a set  $\mathcal{L}_T = \{\tau_1, \tau_2, \dots, \tau_n\}$ . In the *controlled chart-to-table* task, each table row is similarly treated as a tuple  $\tau_i = (t_1, t_2, \dots, t_m)$ , resulting in a comparable structured set  $\mathcal{L}_T$ , allowing both tasks to be evaluated under a unified tuple-based framework.

To assess prediction quality, we adopt a matching scheme inspired by the Structuring Chart-oriented Representation Metric (SCRM) (Xia et al., 2023). For each predicted tuple  $p$  and ground-truth tuple  $q$ , we compare corresponding fields  $p_i$  and  $q_i$ , where  $i = 0, 1, \dots, n-1$  and  $n$  is the tuple length. String fields are evaluated using edit distance  $J(p_i, q_i)$ , and numerical fields using relative error  $e(p_i, q_i)$ . A tuple is considered correct only if **all fields satisfy their respective tolerance**, with three tolerance levels: *strict* ( $J \leq 0$  or  $e \leq 0$ ), *slight* ( $J \leq 3$  or  $e \leq 0.05$ ), and *high* ( $J \leq 5$  or

$e \leq 0.10$ ).

We evaluate structural reconstruction using Precision ( $P = n_m/n_p$ ), Recall ( $R = n_m/n_{gt}$ ), F1 score ( $2PR/(P + R)$ ), and IoU ( $n_m/(n_p + n_{gt} - n_m)$ ). Here,  $n_m$ ,  $n_p$ , and  $n_{gt}$  denote the counts of matched, predicted, and ground-truth tuples, respectively. These metrics provide a principled assessment of semantic alignment and numerical fidelity.

**Perceptual Similarity.** To bridge the gap between syntax and human perception, we employ CLIPScore to measure semantic consistency via embedding alignment. This complements structured metrics by quantifying conceptual fidelity grounded in visual cognition.

## 5 Evaluation

This section benchmarks diverse proprietary and open-source MLLMs using ChartAnchor, offering a holistic performance comparison.

### 5.1 Evaluated Models and Implementation

We benchmark 24 MLLMs across two categories. For the open-source models, total parameters ranging from 2B to 235B, including: Qwen2.5-VL series, Qwen3-VL series, InternVL3 series, DeepSeek-VL series, GLM series, and MiMo-VL-7B variants, alongside Gemma-3-4B-it, LLaVA-v1.6-Mistral-7B, MiniCPM-V-2.6-8B, and CogVLM2-Llama3-Chat-19B. For proprietary models, we include GPT-4o, GPT-5, Claude-3.7-Sonnet, Claude-4.5-Sonnet, and Gemini-3-Pro. For reproducibility, detailed experimental settings and the full list of prompts are relegated to Appendix E.

### 5.2 Key Insights from Results

Tab. 4 and 5 present the results for the Chart-to-Code and controlled Chart-to-Table reconstruction tasks, respectively. Key insights are discussed below, with further details in Appendix E.

1) **GPT-5 establishes a new state-of-the-art across both tasks.** GPT-5 achieves the highest overall score in chart-to-code generation (72.93) and strong F1 scores in chart-to-table reconstruction (F1-High: 55.36). Its superior visual reasoning capabilities are evidenced by exceptional pass rates and leading scores in both Visual Structure Consistency and Data Fidelity. While open-source models exhibit recent advancements, a distinct performance gap remains, particularly regarding generation accuracy and structural robustness compared to the proprietary baseline.

Model	Pass Rate	Visual Structure Consistency							Data Fidelity	Clip Score	Overall	
		Text					Color	Type				Layout
		Legend	Title	Axis Label	Annos	Avg.						
<b>Proprietary Multimodal Large Language Models</b>												
GPT4o (OpenAI, 2024)	91.88	63.53	72.83	67.20	76.36	69.98	34.64	70.06	80.73	35.85	74.25	58.25
GPT-5 (OpenAI, 2025)	91.93	66.11	86.18	83.63	87.17	80.77	51.21	82.21	92.3	46.55	84.52	72.93
Claude-3-7-Sonnet (Anthropic, 2025)	78.60	54.97	69.11	67.19	70.57	65.46	40.79	59.89	76.53	30.30	65.82	54.59
Claude-4-5-Sonnet (Anthropic, 2025)	83.89	60.46	79.15	74.86	80.65	73.78	49.44	65.9	85.05	36.7	78.93	64.97
Gemini-3-Pro (Comanici et al., 2025)	83.86	60.31	79.84	76.97	83.25	75.09	48.32	71.98	87.38	41.58	75.33	66.61
<b>Open-Source Multimodal Large Language Models</b>												
InternVL3-2B (Zhu et al., 2025)	28.97	18.75	17.41	17.63	20.88	18.67	8.98	16.01	21.55	13.56	17.93	15.75
Qwen2.5-VL-3B-Instruct (Yang et al., 2024a)	48.07	28.24	31.80	26.86	39.44	31.58	12.29	27.01	40.19	16.71	38.63	25.55
Gemma-3-4B-it (Team et al., 2025c)	66.20	42.29	38.72	36.41	57.50	43.73	18.74	33.53	60.46	24.21	47.48	36.13
DeepSeek-VL2-27B-A4B (Wu et al., 2024b)	7.98	5.93	5.53	6.38	5.41	5.81	2.7	6.08	5.54	3.25	4.51	4.65
DeepSeek-VL-7B (Lu et al., 2024)	32.05	17.59	20.41	17.62	23.19	19.70	9.56	17.37	24.83	7.74	20.35	15.84
LLaVA-v1.6-Mistral-7B (Li et al., 2024a)	15.32	8.74	8.37	4.96	4.91	6.75	6.03	7.79	5.05	4.76	4.39	6.07
Qwen2.5-VL-7B-Instruct (Yang et al., 2024a)	67.59	41.75	41.46	43.60	61.90	47.18	18.45	41.83	64.30	27.85	51.85	39.92
MiMo-VL-7B-SFT (Team et al., 2025b)	35.56	24.95	28.95	28.52	24.6	26.76	15.06	26.91	25.64	18.53	26.91	23.30
MiMo-VL-7B-RL (Team et al., 2025b)	41.51	30.19	34.79	34.01	30.26	32.31	18.76	32.77	31.96	22.92	29.9	28.10
MiniCPM-V-2.6-8B (Yao et al., 2024)	26.87	16.76	16.88	14.21	16.18	16.01	7.91	13.77	16.92	12.95	14.35	13.51
Qwen3-VL-8B-Instruct (Bai et al., 2025)	62.16	43.11	48.8	48.82	52.92	48.41	30.97	48.45	55.56	27.27	54.96	44.27
InternVL3-9B (Zhu et al., 2025)	69.19	44.75	47.48	45.06	59.57	49.20	22.06	40.72	66.20	29.20	55.14	41.47
GLM-4V-9B (GLM et al., 2024b)	46.04	26.55	27.86	24.55	43.78	30.68	12.02	23.32	45.69	15.51	36.66	25.44
CogVLM2-Llama3-Chat-19B (Hong et al., 2024)	7.82	7.12	6.03	4.79	1.25	4.80	3.77	5.61	1.21	3.52	6.15	3.78
InternVL3-14B (Zhu et al., 2025)	80.60	52.80	55.69	54.90	75.12	59.63	26.13	53.08	80.63	30.59	64.7	50.01
Qwen2.5-VL-32B-Instruct (Yang et al., 2024a)	67.59	42.71	48.69	48.91	73.55	53.47	23.56	48.29	82.08	21.14	66.58	45.70
Qwen3-VL-32B-Instruct (Bai et al., 2025)	73.56	51.15	46.67	50.64	66.39	53.71	38.51	58.46	70.14	33.86	63.87	53.09
GLM-4.5V-106B (Team et al., 2025a)	66.77	49.18	61.44	58.12	55.49	56.06	32.55	55.54	57.97	34.03	52.58	48.12
Qwen3-VL-235B-A22B-Instruct (Bai et al., 2025)	79.62	57.23	64.54	62.65	73.67	64.52	37.2	62.88	76.81	38.07	68.62	58.02

Table 4: Comprehensive performance comparison of proprietary and open-source MLLMs on the Chart-to-Code generation task. For data fidelity, we report IoU score under a slight tolerance stage. As our collected matplotlib images do not include annotations by design, they are excluded from the annotation metric evaluation. The overall score is defined as  $(text_{avg} + layout + type + color + data\ fidelity + clip\ score)/6$ .

Model	Pass Rate	P <span style="color:red">■</span>	R <span style="color:red">■</span>	F1 <span style="color:red">■</span>	P <span style="color:orange">■</span>	R <span style="color:orange">■</span>	F1 <span style="color:orange">■</span>	P <span style="color:green">■</span>	R <span style="color:green">■</span>	F1 <span style="color:green">■</span>
<b>Proprietary Multimodal Large Language Models</b>										
GPT-4o (OpenAI, 2024)	97.12	10.74	8.44	8.65	37.71	23.30	24.69	60.42	35.44	37.72
GPT-5 (OpenAI, 2025)	99.94	19.62	17.88	17.64	61.41	44.63	45.89	77.48	53.79	55.36
Claude-3-7-Sonnet (Anthropic, 2025)	94.85	12.75	11.02	10.86	44.64	29.43	30.52	58.12	37.11	38.62
Claude-4-5-Sonnet (Anthropic, 2025)	98.66	14.89	14.46	13.65	43.94	40.22	38.29	54.87	49.6	47.11
Gemini-3-Pro (Comanici et al., 2025)	95.19	19.96	18.03	18.15	57.78	45.18	46.48	70.61	52.93	54.72
<b>Open-Source Multimodal Large Language Models</b>										
InternVL3-2B (Zhu et al., 2025)	55.16	5.84	3.86	4.08	22.18	10.88	11.98	51.04	18.29	21.19
Qwen2.5-VL-3B-Instruct (Yang et al., 2024a)	92.18	9.11	6.13	6.51	36.70	17.28	19.12	61.01	27.43	30.73
Gemma-3-4B-it (Team et al., 2025c)	96.23	7.35	5.38	5.52	32.05	18.33	19.72	48.89	26.49	28.60
DeepSeek-VL2-27B-A4B (Wu et al., 2024b)	75.18	3.81	3.03	3.08	17.33	12.15	12.76	24.83	15.65	16.76
DeepSeek-VL-7B (Lu et al., 2024)	98.34	1.72	0.36	0.49	5.47	0.90	1.33	26.95	4.79	7.02
LLaVA-v1.6-Mistral-7B (Li et al., 2024a)	76.11	4.57	1.66	2.02	22.22	6.33	7.72	44.38	12.15	14.89
Qwen2.5-VL-7B-Instruct (Yang et al., 2024a)	95.05	12.17	8.18	8.67	48.45	23.75	26.35	69.58	30.96	34.90
MiMo-VL-7B-SFT (Team et al., 2025b)	97.5	12.38	9.71	9.91	47.48	28.72	30.5	70.72	38.2	41.09
MiMo-VL-7B-RL (Team et al., 2025b)	97.36	12.55	9.86	10.07	47.63	28.92	30.64	68.91	37.96	40.64
MiniCPM-V-2.6-8B (Yao et al., 2024)	79.66	5.07	3.03	3.30	26.80	11.07	12.51	53.36	18.98	22.09
Qwen3-VL-8B-Instruct (Bai et al., 2025)	92.76	13.18	10.02	10.31	51	29.44	31.63	69.2	36.7	39.97
InternVL3-9B (Zhu et al., 2025)	88.43	11.42	8.79	8.95	44.54	25.36	26.98	63.49	34.47	36.96
GLM-4V-9B (GLM et al., 2024b)	91.93	7.14	4.86	5.12	27.42	13.17	14.50	59.50	24.64	27.70
InternVL3-14B (Zhu et al., 2025)	66.18	8.19	7.47	7.28	29.27	22.30	22.81	40.90	29.67	30.49
CogVLM2-Llama3-Chat-19B (Hong et al., 2024)	78.41	2.43	0.87	1.06	10.28	3.92	4.56	25.84	8.37	10.36
Qwen2.5-VL-32B-Instruct (Yang et al., 2024a)	97.83	13.05	9.87	10.10	48.65	28.94	30.99	68.14	37.97	41.04
Qwen3-VL-32B-Instruct (Bai et al., 2025)	97.56	16.04	12.92	13.15	55.91	35.9	37.86	72.7	43.53	46.37
GLM-4.5V-106B (Team et al., 2025a)	99.8	14.13	11.71	11.83	52.7	34.48	36.12	71.98	43.49	45.87
Qwen3-VL-235B-A22B-Instruct (Bai et al., 2025)	99.58	17.59	13.75	14.19	63.76	37.97	40.57	85.25	45.7	49.45

Table 5: Comparison of model performance on the controlled chart-to-table task. Pass Rate indicates the proportion of examples for which the model produced a parsable table. P, R, and F1 denote precision, recall, and F1-score, respectively. Colored markers represent different tolerance levels: ■ for strict, ■ for slight, and ■ for high.

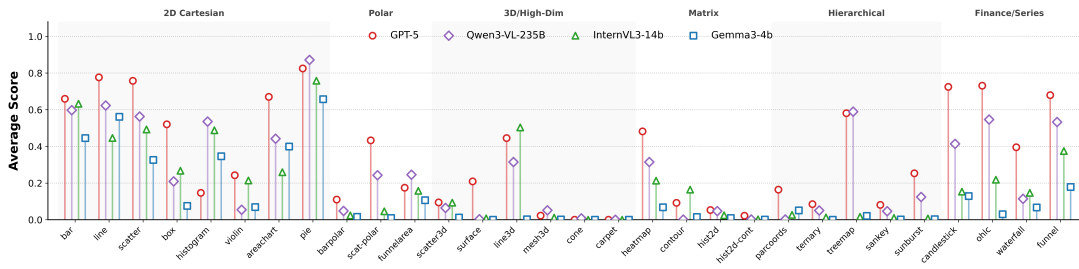


Figure 5: Comparison of Data Attribute Prediction Across Chart Types for Different Models

2) *The "Thinking" Paradox: Reasoning enhances structural alignment but risks amplifying perceptual errors.* Models equipped with "thinking" modes (e.g., GPT-5, Gemini 3) excel in layout alignment and chart type recognition by logically deducing structural composition. However, this capabilities does not guarantee improvements in data or color fidelity; in fact, reasoning chains may inadvertently amplify hallucinations by logically rationalizing initial perception errors. Ultimately, "thinking" upgrades logical planning rather than low-level visual acuity.

3) *On-Policy RL catalyzes structural reasoning and code synthesis.* Relative to MiMo-VL-7B-SFT, MiMo-VL-7B-RL achieves a substantial qualitative leap in Chart-to-Code generation, elevating the pass rate from 35.56 to 41.51 and overall score from 23.30 to 28.10. Driven by the Mixed On-policy RL (MORL) framework, the model transcends the surface-level mimicry characteristic of SFT to internalize visual logical hierarchies. This advancement is evidenced by superior Visual Structure Consistency—where RL effectively aligns COT reasoning with the rigorous global topological constraints of code syntax.

4) *Chart-to-code generation reveals consistent weaknesses in color replication and data fidelity.* Even top models (e.g., GPT-5) achieve lower scores in Color and Data Fidelity compared to structural elements like Title or Layout, indicating that fine-grained visual detail understanding remains a major bottleneck in generative chart reasoning.

### 5.3 Type Analysis

Figure 5 shows a comparative analysis of data attribute prediction accuracy across chart types in the Chart-to-Code task. Overall, GPT-5 establishes a *performance ceiling*, particularly in 2D Cartesian and Finance/Series categories, while Qwen3-VL remains a competitive baseline, often matching GPT-5 in fundamental types like pie and histogram.

Crucially, we observe a substantial **Geometric Reasoning Gap**. Performance for all models degrades sharply in Polar and 3D categories. While models handle rectilinear layouts effectively, performance collapses on their radial or multi-dimensional counterparts. This indicates that current VLMs rely heavily on visual pattern recognition rather than intrinsic geometric reasoning. They struggle to map pixel-space information to non-orthogonal coordinate systems or to resolve spatial occlusions in 3D projections, highlighting a lack of

spatial inductive bias for complex topologies.

Furthermore, all models, including GPT-5, exhibit a **Struggle with Statistical Abstraction**. They underperform on Matrix and abstract statistical charts (e.g., box, violin, heatmap). Unlike scatter plots that map raw data points directly, these charts require interpreting aggregated statistical distributions or dense grid encodings. This implies that chart-to-code capabilities are currently constrained by the models' limited ability to deconstruct high information density and interpret abstract visual summaries.

### 5.4 Alignment with Human Evaluation

Metric	Acc (%)	Kendall's $\tau$
Visual Structure Consistency	88.0	0.76
Perceptual Quality	84.0	0.68
Semantic Data Fidelity	85.0	0.71

Table 6: Human alignment analysis.

To verify whether our evaluation metrics reflect human preferences, we conduct a pairwise comparison study. We sample 300 chart pairs generated by different models from the same ground-truth input and ask domain experts to indicate their preference along *Visual Structure Consistency*, *Semantic Data Fidelity*, and *Perceptual Quality*. As shown in Tab. 6, both Consistency Accuracy and Kendall's  $\tau$  demonstrate strong agreement between metric-induced rankings and human judgments. Experimental setup and annotation details are provided in Appendix E.5.

## 6 Conclusion

In this work, we introduce ChartAnchor, a comprehensive benchmark for evaluating chart grounding. Unlike prior tasks, ChartAnchor unifies chart-to-code generation and controlled table reconstruction to rigorously assess visual, structural, and numerical fidelity. The dataset encompasses 8,068 chart-table-code triplets spanning 30 diverse types and multiple plotting libraries. We further proposed a multi-level evaluation protocol covering functional validity, visual consistency, data accuracy and perceptual similarity. Experiments across 24 MLLMs reveal that even the performance leader, GPT-5, continues to struggle with fine-grained data recovery and visual structure consistency. These findings underscore the need for integrating symbolic reasoning with visual precision, and we hope ChartAnchor catalyzes research on robust chart comprehension in critical domains.

## 7 Limitations and Future Work

While ChartAnchor currently targets static charts, real-world visualizations increasingly leverage interactive and dynamic components. Future work aims to extend the benchmark to encompass a broader spectrum of dynamics, such as drill-down plots, animated data transitions, and multi-view dashboards. This expansion enables the evaluation of model proficiency in handling dynamic semantics and multi-state rendering, significantly broadening the benchmark’s relevance to realistic analytical environments.

## References

Anthropic. 2025. Claude 3.7 sonnet and claude code. <https://www.anthropic.com/news/claude-3-7-sonnet/>.

Anthropic. 2025. *Introducing claude 4. Preprint*.

Jacob Austin, Augustus Odena, Maxwell Nye, Maarten Bosma, Henryk Michalewski, David Dohan, Ellen Jiang, Carrie Cai, Michael Terry, Quoc Le, and 1 others. 2021. Program synthesis with large language models. *arXiv preprint arXiv:2108.07732*.

Shuai Bai, Yuxuan Cai, Ruizhe Chen, Keqin Chen, Xionghui Chen, Zesen Cheng, Lianghao Deng, Wei Ding, Chang Gao, Chunjiang Ge, Wenbin Ge, Zhifang Guo, Qidong Huang, Jie Huang, Fei Huang, Binyuan Hui, Shutong Jiang, Zhaohai Li, Mingsheng Li, and 45 others. 2025. *Qwen3-vl technical report. Preprint*, arXiv:2511.21631.

Mark Chen, Jerry Tworek, Heewoo Jun, Qiming Yuan, Henrique Ponde De Oliveira Pinto, Jared Kaplan, Harri Edwards, Yuri Burda, Nicholas Joseph, Greg Brockman, and 1 others. 2021. Evaluating large language models trained on code. *arXiv preprint arXiv:2107.03374*.

Gheorghe Comanici, Eric Bieber, Mike Schaekermann, Ice Pasupat, Noveen Sachdeva, Inderjit Dhillon, Marcel Blistein, Ori Ram, Dan Zhang, Evan Rosen, and 1 others. 2025. Gemini 2.5: Pushing the frontier with advanced reasoning, multimodality, long context, and next generation agentic capabilities. *arXiv preprint arXiv:2507.06261*.

Team GLM, Aohan Zeng, Bin Xu, Bowen Wang, Chenhui Zhang, Da Yin, Diego Rojas, Guanyu Feng, Hanlin Zhao, Hanyu Lai, Hao Yu, Hongning Wang, Jiadai Sun, Jiajie Zhang, Jiale Cheng, Jiayi Gui, Jie Tang, Jing Zhang, Juanzi Li, and 37 others. 2024a. *Chatglm: A family of large language models from glm-130b to glm-4 all tools. Preprint*, arXiv:2406.12793.

Team GLM, Aohan Zeng, Bin Xu, Bowen Wang, Chenhui Zhang, Da Yin, Dan Zhang, Diego Rojas, Guanyu Feng, Hanlin Zhao, and 1 others. 2024b. Chatglm: A

family of large language models from glm-130b to glm-4 all tools. *arXiv preprint arXiv:2406.12793*.

Wenyi Hong, Weihang Wang, Ming Ding, Wenmeng Yu, Qingsong Lv, Yan Wang, Yean Cheng, Shiyu Huang, Junhui Ji, Zhao Xue, and 1 others. 2024. Cogvlm2: Visual language models for image and video understanding. *arXiv preprint arXiv:2408.16500*.

Kushal Kafle, Brian Price, Scott Cohen, and Christopher Kanan. 2018. Dvqa: Understanding data visualizations via question answering. In *Proceedings of the IEEE conference on computer vision and pattern recognition*, pages 5648–5656.

Samira Ebrahimi Kahou, Vincent Michalski, Adam Atkinson, Ákos Kádár, Adam Trischler, and Yoshua Bengio. 2017. Figureqa: An annotated figure dataset for visual reasoning. *arXiv preprint arXiv:1710.07300*.

Shankar Kantharaj, Xuan Long Do, Rixie Tiffany Ko Leong, Jia Qing Tan, Enamul Hoque, and Shafiq Joty. 2022a. Opencqa: Open-ended question answering with charts. *arXiv preprint arXiv:2210.06628*.

Shankar Kantharaj, Rixie Tiffany Ko Leong, Xiang Lin, Ahmed Masry, Megh Thakkar, Enamul Hoque, and Shafiq Joty. 2022b. Chart-to-text: A large-scale benchmark for chart summarization. *arXiv preprint arXiv:2203.06486*.

Feng Li, Renrui Zhang, Hao Zhang, Yuanhan Zhang, Bo Li, Wei Li, Zejun Ma, and Chunyuan Li. 2024a. Llava-next-interleave: Tackling multi-image, video, and 3d in large multimodal models. *arXiv preprint arXiv:2407.07895*.

Kaixin Li, Yuchen Tian, Qisheng Hu, Ziyang Luo, Zhiyong Huang, and Jing Ma. 2024b. Mmcode: Benchmarking multimodal large language models for code generation with visually rich programming problems. *arXiv preprint arXiv:2404.09486*.

Fuxiao Liu, Xiaoyang Wang, Wenlin Yao, Jianshu Chen, Kaiqiang Song, Sangwoo Cho, Yaser Yacoob, and Dong Yu. 2023. Mmc: Advancing multimodal chart understanding with large-scale instruction tuning. *arXiv preprint arXiv:2311.10774*.

Haoyu Lu, Wen Liu, Bo Zhang, Bingxuan Wang, Kai Dong, Bo Liu, Jingxiang Sun, Tongzheng Ren, Zhuoshu Li, Hao Yang, and 1 others. 2024. Deepseek-vl: towards real-world vision-language understanding. *arXiv preprint arXiv:2403.05525*.

Ahmed Masry, Do Xuan Long, Jia Qing Tan, Shafiq Joty, and Enamul Hoque. 2022. Chartqa: A benchmark for question answering about charts with visual and logical reasoning. *arXiv preprint arXiv:2203.10244*.

Nitesh Methani, Pritha Ganguly, Mitesh M Khapra, and Pratyush Kumar. 2020. Plotqa: Reasoning over scientific plots. In *Proceedings of the IEEE/CVF Winter Conference on Applications of Computer Vision*, pages 1527–1536.



797 Zifeng Zhu, Mengzhao Jia, Zhihan Zhang, Lang Li,  
 798 and Meng Jiang. 2024. Multichartqa: Benchmark-  
 799 ing vision-language models on multi-chart problems.  
 800 *arXiv preprint arXiv:2410.14179*.

<b>Appendix</b>		801
<b>Contents</b>		802
<b>1 Introduction</b>	<b>1</b>	803
<b>2 Related Work</b>	<b>2</b>	804
<b>3 The ChartAnchor Benchmark</b>	<b>3</b>	805
3.1 Task Definitions . . . . .	3	806
3.2 Data Collection . . . . .	3	807
3.2.1 Data Source . . . . .	3	808
3.2.2 Code Generation and Augmentation for Existing Datasets. . . . .	4	809
3.2.3 Filtering. . . . .	4	810
3.3 Dataset Analysis . . . . .	4	811
3.4 Comparison with Other Benchmarks	5	812
<b>4 Evaluation Metrics</b>	<b>5</b>	813
<b>5 Evaluation</b>	<b>6</b>	814
5.1 Evaluated Models and Implementation . . . . .	6	815
5.2 Key Insights from Results . . . . .	6	816
5.3 Type Analysis . . . . .	8	817
5.4 Alignment with Human Evaluation	8	818
<b>6 Conclusion</b>	<b>8</b>	819
<b>7 Limitations and Future Work</b>	<b>9</b>	820
<b>Appendices</b>	<b>12</b>	821
<b>A Detailed Data Collection and Processing Procedures</b>	<b>12</b>	822
A.1 Data Sources and Corpus Composition . . . . .	12	823
A.2 Detailed Code Generation and Augmentation for Existing Datasets . . . . .	13	824
A.3 Filtering Strategy and Statistics . . . . .	14	825
<b>B More Analysis about Dataset</b>	<b>15</b>	826
<b>C Model License</b>	<b>16</b>	827
<b>D Broader Impacts</b>	<b>16</b>	828
<b>E Experiments</b>	<b>18</b>	829
E.1 Implementation Details . . . . .	18	830
E.2 Prompts . . . . .	18	831
E.3 Additional Analysis . . . . .	18	832
E.4 Analysis Across Chart Types . . . . .	20	833
E.5 Correlation with Human Evaluation	20	834

842	<b>F Case Study of ChartAnchor</b>	<b>21</b>
843	<b>G Chart Examples</b>	<b>27</b>
844	<b>H Volunteer Recruitment and Payment</b>	<b>27</b>
845	<b>I Data Consent</b>	<b>27</b>
846	<b>J AI Assistance Disclosure</b>	<b>27</b>
847	<b>K Data Screening and Privacy Protection</b>	<b>27</b>
848	<b>L Data Provenance and Licensing</b>	<b>27</b>
849	L.1 Data Sources and Original Licenses	27
850	L.2 Details on Newly Curated Plotly	
851	Data . . . . .	27
852	L.3 Redistribution Arrangements . . .	27

## 853 **A Detailed Data Collection and**

### 854 **Processing Procedures**

855 In this appendix, we provide a comprehensive de-  
856 scription of our data collection, code synthesis,  
857 and quality filtering procedures for constructing  
858 the ChartAnchor dataset, a large-scale corpus of  
859 chart–table–code triples designed to support chart  
860 understanding and structured generation tasks. The  
861 goal of our pipeline is to ensure semantic fidelity,  
862 visual diversity, and execution reliability, making  
863 the dataset suitable for rigorous evaluation of large  
864 multimodal models (MLLMs).

#### 865 **A.1 Data Sources and Corpus Composition**

866 We collect a total of **230,549 raw chart–table**  
867 **pairs**, which serve as the foundation for construct-  
868 ing the ChartAnchor corpus. These samples are  
869 derived from two sources:

- 870 • **218,549 chart–table–code triplets** crawled  
871 from open-source visualization platforms,  
872 where each sample includes a rendered chart  
873 image, the structured data table, and the cor-  
874 responding plotting script (mainly written in  
875 Plotly).
- 876 • **12,000 chart–table pairs** sampled from four  
877 existing chart-related datasets that provide  
878 image–table pairs but do not include source  
879 code.

880 In the remainder of this section, we describe the  
881 composition and characteristics of both sources in  
882 detail.

883 **1. Existing Datasets.** To bootstrap the construc-  
884 tion of ChartAnchor, we leverage four well-known

885 chart-centric datasets: *PlotQA*, *DVQA*, *FigureQA*,  
886 and *VisText*. These datasets collectively comprise  
887 over **750,000 chart samples**, each offering paired  
888 chart images and tabular data, but lacking exe-  
889 cutable plotting code. From each dataset, we uni-  
890 formly sample **3,000 representative chart–table**  
891 **pairs**, yielding a total of **12,000 initial samples** for  
892 downstream code synthesis. The sampled charts  
893 span **five major types**: bar, line, scatter, area, and  
894 pie charts.

895 Below, we briefly describe the origin and struc-  
896 ture of each dataset:

- 897 • **PlotQA** is a large-scale dataset constructed from  
898 real-world sources such as the World Bank, gov-  
899 ernment portals, and open data platforms. It cov-  
900 ers diverse domains including economics, health,  
901 education, and the environment. It contains  
902 **224,377 chart images**, primarily bar, line, and  
903 scatter plots, each paired with structured table  
904 data and metadata.
- 905 • **DVQA** is a synthetic dataset focused on bar  
906 chart understanding, comprising **300,000 high-**  
907 **resolution images** generated via Matplotlib.  
908 Each sample is associated with its underlying  
909 data table and metadata describing chart layout  
910 elements.
- 911 • **FigureQA** contains **over 100,000 synthetic**  
912 **chart images** generated using the Bokeh library,  
913 covering five figure types with structural annota-  
914 tions such as bounding boxes and labels.
- 915 • **VisText** comprises **12,441 chart–caption sam-**  
916 **ples**, each including a chart image, data table,  
917 and scene graph. Charts are rendered using  
918 Vega-Lite with real-world data from Statista.

919 **2. Newly Curated Dataset.** To enhance chart  
920 diversity and obtain source code supervision, we  
921 crawl **218,549 chart–table–code triplets** from  
922 open-source visualization communities. These  
923 samples are created by users across a wide range  
924 of domains and include full plotting scripts. Each  
925 sample contains a rasterized chart image, the un-  
926 derlying data table, and a Python script that can  
927 regenerate the visualization.

928 This collection spans **over 36 chart types**, in-  
929 cluding both standard (e.g., bar, line, scatter) and  
930 specialized forms (e.g., candlestick, violin, sankey).  
931 Table 7 summarizes the sample distribution by  
932 chart type.

Type Num	Scatterpolar 8193	Cone 384	Line3d 10000	Carpet 164	Barpolar 1599	Mesh3d 10000	Ohlc 3949	Line 10000	Histogram2d 4873
Type Num	Areachart 5740	Box 9530	Scatterternary 3915	Waterfall 395	Heatmap 9980	Scatter 10000	Scatter3d 7300	Surface 10000	Histogram 10000
Type Num	Treemap 1122	Violin 7960	Parcoords 3567	Funnelarea 219	Funnel 716	Sankey 8910	Candlestick 4750	Contour 10000	Sunburst 2962
Type Num	bar 8920	pie 10000	histogram2dcontour 5250	Density Tile Map 585	Tile Map 9382	Atlas Map 9675	Choropleth Atlas Map 9260	Choropleth Tile Map 513	Image-based Table 8736

Table 7: Number of samples per chart type in the newly curated dataset.

## A.2 Detailed Code Generation and Augmentation for Existing Datasets

To address the lack of source code in existing chart datasets, we design a parameterized code generation pipeline that translates chart metadata into executable Python plotting scripts. This enables us to construct chart–table–code triplets from datasets that originally only contain chart images and tabular data. The pipeline consists of three sequential stages: (1) semantic mapping, (2) visual attribute parameterization, and (3) controlled data augmentation.

**Semantic Mapping.** We first parse the metadata associated with each chart (e.g., chart type, data structure, labels, axis information) and map it to corresponding primitives in popular visualization libraries. For example, bar charts are mapped to calls like `plt.bar()`, line charts to `plt.plot()`, and scatter plots to `plt.scatter()`. We also infer high-level layout logic such as multiple series plotting, stacked vs. grouped bar configurations.

**Visual Attribute Parameterization.** We define a structured set of visual attributes that govern the appearance of chart renderings. These attributes cover visual elements such as colors, strokes, fonts, axes, legends, and layout. Each attribute corresponds to a configurable parameter in the plotting code and forms the basis for subsequent augmentation.

- **Color schemes:** parameters defining the color of key visual elements including lines, bars, markers, and background.
- **Stroke and marker styles:** properties such as line width, dash pattern, and marker shape applicable to strokes or data points.
- **Font settings:** parameters specifying font size, family, and weight for chart titles, axis labels, and tick labels.
- **Axis configuration:** includes axis visibility, tick mark density and orientation, label formatting,

and scaling behavior (e.g., linear vs. log).

- **Legend configuration:** layout options including visibility, location, frame style, and padding.
- **Canvas layout:** overall figure width, height, and aspect ratio, affecting spatial organization and density.

**Systematic Augmentation.** To further increase style diversity, we apply controlled random perturbations over the sampled parameters. All augmentations are range-constrained to preserve semantic structure while introducing sufficient variability. The applied strategies include:

- **Color perturbation:** visual element colors are augmented through multi-level sampling and transformation. Initial base colors are perturbed in HSV color space by applying random shifts to hue ( $\pm 0.2$ ), saturation ( $\pm 0.25$ ), and brightness ( $\pm 0.25$ ), resulting in perceptually similar yet distinct styles. For elements requiring visual separation (e.g., gridlines or multiple series), two contrasting strategies are adopted: (i) *same-family* perturbation with minimal hue deviation to maintain stylistic consistency, and (ii) *complementary sampling*, where colors are rotated approximately 180 degrees in hue and slightly jittered to avoid exact symmetry. All foreground colors—such as text, ticks, and gridlines—are dynamically adjusted based on the chart background to ensure a minimum contrast ratio of 3:1, as computed using relative luminance. If automatic contrast resolution fails, fallback binary colors (black or white) are applied to maintain legibility.
- **Line and stroke styling:** visual stroke properties—including line width, line pattern, and marker shape—are randomly selected from constrained sets. Line widths are sampled uniformly from a predefined range (e.g., 1.2 to 3.5 pt), and styles are chosen from standard patterns such as

solid, dashed, dotted, and dash-dot. This variation simulates a broad range of visual densities and chart semantics, while ensuring clarity and readability.

- **Grid and frame styling:** the presence of grid-lines is toggled with a fixed probability (e.g., 70%). If enabled, grid properties including color, alpha transparency (range: 0.2–0.6), and line style are randomly assigned. Grid color may be either a low-contrast perturbation of the primary visual element (same-family) or a dynamically selected complementary color that satisfies a minimum contrast ratio relative to the background. Chart frame (spine) color and width are also independently perturbed if specified, or otherwise randomly assigned.
- **Tick and axis label formatting:** font size for tick labels is sampled from a narrow range (e.g., 8–12 pt), and axis label font size is sampled separately (e.g., 10–14 pt). Tick direction, length, and visibility are randomized across axes. Label rotation angles are applied conditionally when present, or left unset to trigger automatic formatting. Axis spine visibility and style may also vary with domain-specific settings.
- **Text and title layout:** title font size is sampled within a broader range (e.g., 12–18 pt) to accommodate both compact and expanded figure layouts. To preserve clarity in narrow plots, chart titles are automatically wrapped at fixed character widths (e.g., 50 characters per line) to avoid horizontal overflow and truncation, ensuring consistent rendering across canvas aspect ratios.
- **Legend configuration:** legend display is toggled probabilistically. When shown, layout options including position (e.g., top-right, bottom-center), spacing, and frame style are randomly selected. This simulates visual clutter or compression effects common in real-world plots with many categories.
- **Canvas and layout variation:** figure width and height are sampled from uniform distributions (e.g., width =  $6 \pm 3$  units, height =  $5 \pm 2$  units), producing aspect ratios ranging from portrait to landscape. These adjustments impact element scaling, whitespace, and overall plot density, thereby exposing models to varying layout constraints and visual balance conditions.

These attribute-level augmentations collectively simulate a broad range of real-world chart styles. By systematically varying color schemes, marker designs, axis configurations, legend layouts, font properties, and layout structures, the resulting code-image pairs exhibit substantial stylistic diversity while preserving semantic fidelity. This enables more robust training and evaluation of models in chart understanding and generation tasks. All scripts are programmatically verified for syntax correctness and rendering completeness, ensuring reproducibility and consistency across the constructed dataset.

### A.3 Filtering Strategy and Statistics

Filtering Stage	Removed	Retained
Completeness Check	51,582	178,967
Structural Filtering	52,963	126,004
Deduplication	62,525	63,479
Executability Check	15,011	48,468
Manual Filtering	40,400	8,068

Table 8: Sample counts at each filtering stage.

#### Automated filtering.

– *Completeness filtering:* We removed all samples missing any of the core components: structured table, chart image, or generation code. This includes examples with null or corrupt image files, empty tables, or scripts lacking plotting calls. A total of **51,582** examples were eliminated at this step.

– *Structural filtering:* We excluded chart instances whose structure could not be reliably reconstructed into code without external visual assets. This includes geospatial plots (e.g., choropleth tile map), rasterized or image-based tables, and charts containing embedded logos and background images that are not specified in the underlying table. In addition, we filtered out samples whose generated code exceeded a predefined length threshold, indicating excessive verbosity, redundant operations, or inclusion of unrelated plotting logic. This step removed **52,963** samples in total.

– *Deduplication:* For each data table, we extracted column-level features including column type (categorical or quantitative), column length, and a representative statistic determined by type: the most frequent value for categorical columns and the mean for quantitative columns. These features were computed for all columns and concatenated

in column order to form a string-based table signature. Charts with identical signatures were treated as duplicates, and only one instance was retained. This filtering step removed **62,525** structurally duplicated samples.

**Example.** The following table:

City	Category	Score
Paris	A	88.0
Paris	B	92.0
London	A	84.0
London	B	94.0

is processed column by column to compute the table signature:

- **Column 1 (City):**

- Type: Categorical
- Length: 4
- Representative statistic: Most frequent value = Paris

- **Column 2 (Category):**

- Type: Categorical
- Length: 4
- Representative statistic: Most frequent value = A

- **Column 3 (Score):**

- Type: Quantitative
- Length: 4
- Representative statistic: Mean = 89.5

These features are concatenated in column order to produce the table signature:

categorical4Pariscategorical4A-quantitative489.5

If another chart shares the same signature, it is considered structurally equivalent and is filtered out.

– *Executability check:* Each Python script was executed in an isolated environment. We discarded any sample whose script resulted in errors (e.g., due to missing fields or malformed syntax), produced no visual output, or generated a blank or invalid image file. This step filtered **15,011** additional cases.

After automated filtering, a total of **48,468** high-confidence samples were retained from the crawled corpus.

## Human Filtering Protocol.

Each chart–table–code triple was manually reviewed to ensure semantic correctness, visual interpretability, and style variation. Reviewers were graduate-level annotators with experience in Python scripting and data visualization. A total of six reviewers participated in the process, which was completed over the course of ten days.

The review was conducted in two passes: independent blind annotation followed by adjudication in case of disagreement. To ensure intra-group consistency, samples were first grouped by structural chart type (e.g., bar, line, scatter). Each triple was then evaluated along three axes—*semantic accuracy*, *visual clarity*, and *stylistic diversity*—following the rubric in Table 9.

Each dimension was assigned one of three labels: (1)Accept, (2)Borderline, or (3)Reject. Samples receiving a double-Reject on any axis were removed. Disagreements or borderline cases were reviewed by a third annotator, who was allowed to execute or minimally adjust code to resolve ambiguity.

In total, **48,468** samples were flagged for human review, of which **40,400** were removed, **8,068** accepted without change.

## B More Analysis about Dataset

We tokenize each code script in the benchmark and compute the token length for each example. The analysis shows an average length of approximately 628 tokens with a standard deviation of 466, and a minimum of 58 tokens. This indicates that the dataset includes both concise, logically clear scripts and longer, more complex ones, reflecting a broad range of task difficulty and coverage of real-world scenarios. Such diversity provides a solid foundation for evaluating the generalization capabilities of multimodal models across varying levels of complexity.

We categorize all table columns in the dataset into three types: string, numeric, and date. Numeric columns include both integers and floating-point numbers. Columns that do not meet either criterion are classified as strings by default. Our analysis shows that 71% of the columns are numeric, 23% are string, and 6% are date. This distribution indicates that numeric fields dominate the dataset, aligning with the inherently quantitative nature of most data visualizations. At the same time, the substantial presence of string and date fields

Dimension	Accept	Borderline	Reject
<b>Semantic Accuracy</b>	All columns in the table are correctly encoded in the chart; axis titles match column names; all data series are included; data-to-visual mappings are accurate and complete.	Most relevant columns are included; minor mismatches in field-to-axis mapping, partial omission of non-critical fields, or inaccurate axis labeling may exist.	One or more key columns are missing or misused; axis assignments do not match table structure; values are incorrectly encoded or hardcoded; chart misrepresents the data.
<b>Visual Clarity</b>	All text is readable; tick marks, labels, and gridlines are well-aligned; spacing and font sizes are appropriate; the chart has no overlaps or clipping.	The chart is generally legible but contains minor issues such as crowded labels, small text, or slight misalignment of elements.	The chart contains severe layout problems, including overlapping text, unreadable labels, distorted scaling, or clipped elements that obstruct interpretation.
<b>Stylistic Diversity</b>	The chart uses varied formatting choices in color, font size, spacing, or layout; visual elements (e.g., legend placement, label orientation) differ from other charts of the same type.	Some formatting differences are present, but the chart closely resembles many others in the same category; variation is minimal.	Formatting is nearly identical to multiple other charts; visual parameters (e.g., spacing, label orientation, font, and color) are reused without change.

Table 9: Review rubric for chart–table–code triples.

highlights the dataset’s semantic diversity, supporting categorical labeling and temporal trends. These findings demonstrate that ChartAnchor offers broad coverage of semantic structures commonly found in real-world data analysis tasks.

## C Model License

Table 10 summarizes the licenses of all models evaluated in ChartAnchor, including both model weights and accompanying code repositories.

## D Broader Impacts

This work introduces a benchmark designed to evaluate the chart grounding ability of multimodal models through structured generation tasks—specifically, producing executable code and aligned tabular data from visual input. By formulating chart-centric understanding as a code- and table-grounded task, the benchmark enables more precise assessment of a model’s capacity to recover structured semantics from complex visualizations. The dataset is constructed from publicly available

and license-compliant sources, with a focus on semantic traceability, syntactic validity, and reproducibility.

To mitigate potential risks, we adopt several safeguards: (1) the dataset emphasizes structured and verifiable content; (2) our filtering and annotation protocols (see Appendix A) enforce consistency across modalities; (3) the evaluation suite includes tests for code execution, alignment fidelity, and structural coverage.

While the benchmark is designed to support research in grounded and interpretable generation, we acknowledge the possibility of unintended use. For instance, models trained or evaluated on ChartAnchor might be applied in automated settings without verification, potentially leading to misleading outputs. Although the benchmark itself does not directly enable such misuse, we recommend that future applications incorporate human oversight, validation mechanisms, and appropriate deployment constraints. Ensuring output traceability is particularly important when models are used in domains such as scientific computing, data journal-

<b>Model</b>	<b>Model License</b>	<b>Code License</b>
GPT-4o	Proprietary	Proprietary
GPT-5	Proprietary	Proprietary
Claude-3-7-Sonnet	Proprietary	Proprietary
Claude-4-5-Sonnet	Proprietary	Proprietary
Gemini-3-Pro	Proprietary	Proprietary
InternVL3-2B	Apache 2.0	MIT
Qwen2.5-VL-3B-Instruct	Apache 2.0	Apache 2.0
Gemma-3-4B-it	gemma	Not Applicable
DeepSeek-VL2-27B-A4B	deepseek	MIT
DeepSeek-VL-7B	deepseek	MIT
LLaVA-v1.6-Mistral-7B	Apache 2.0	Apache 2.0
Qwen2.5-VL-7B-Instruct	Apache 2.0	Apache 2.0
MiMo-VL-7B-SFT	MIT	MIT
MiMo-VL-7B-RL	MIT	MIT
MiniCPM-V-2.6-8B	minicpm	Apache 2.0
Qwen3-VL-3B-Instruct	Apache 2.0	Apache 2.0
InternVL3-9B	Apache 2.0	MIT
GLM-4V-9B	glm-4	Not Applicable
CogVLM2-Llama3-Chat-19B	llama3 + cogvlm2	Apache 2.0
InternVL3-14B	Apache 2.0	MIT
Qwen2.5-VL-32B-Instruct	Apache 2.0	Apache 2.0
Qwen3-VL-32B-Instruct	Apache 2.0	Apache 2.0
GLM-4.5V-106B	MIT	Apache 2.0
Qwen3-VL-235B-A22B-Instruct	Apache 2.0	Apache 2.0

Table 10: Summary of licenses in models that are evaluated in ChartAnchor. Entries marked with “Not Applicable” indicate that authors do not have an explicit code license displayed within the codebase or model checkpoint page.

ism, and business reporting.

We hope that ChartAnchor serves as a resource for advancing multimodal systems that prioritize structured reasoning, factual alignment, and transparency.

## E Experiments

### E.1 Implementation Details

For all models, we set the temperature to  $\tau = 0.1$  and use top- $p$  sampling with  $p = 0.95$  for decoding. The maximum generation length is capped at 16384 tokens. For open-weight models, we adopt `bf16` precision during inference. All experiments are conducted on H100 80G GPUs. Results are reported from a single run per setting, with low-temperature decoding ensuring stability.

### E.2 Prompts

We design tailored input prompts for each task to guide model behavior effectively. Figure 6 illustrates the prompt used in the Chart-to-Code task, which specifies the desired output format and allows the model to choose between visualization libraries (e.g., Plotly or Matplotlib). Figure 7 further presents the prompt format for the Controlled Chart-to-Table task, where key placeholders are dynamically adjusted based on the provided table headers.

### E.3 Additional Analysis

As shown in Table 4 and Table 5, we can see:

- *Chart-to-Code Is Fundamentally Constrained by Long-Horizon Execution Requirements.* Both DeepSeek-VL and DeepSeek-VL2 exhibit consistently low pass rates on the Chart-to-Code task (32.05/7.98), both operate under a maximum sequence length of 4096 tokens. Chart-to-Code requires long-horizon contextual coherence and strict execution fidelity, as successful generation depends on preserving object-level consistency across multiple code segments, including figure initialization, axis construction, and API-level correctness. Under limited context budgets, even minor inconsistencies in earlier object definitions can propagate into non-executable outputs. In contrast, tasks that do not enforce execution validity are far less sensitive to such long-context constraints. This indicates that Controlled Chart-to-Code inherently demands stronger long-context modeling and larger effective context windows, making it substantially more

challenging than perception-oriented chart understanding tasks.

- *Reasoning-Oriented Upgrades Yield Divergent Effects Across Chart Tasks.* While DeepSeek-VL2 shows clear improvements over VL on Controlled Chart-to-Table, it exhibits a performance drop on Chart-to-Code, revealing a model-level trade-off introduced by enhanced reasoning capabilities. Controlled Chart-to-Table benefits from stronger high-level abstraction and structural planning, as it primarily involves localized perception and short-context reasoning without strict execution constraints. In contrast, Chart-to-Code requires faithful continuation of previously established object states. Under limited effective context length, VL2’s stronger reasoning tendency may reconstruct code structures based on inferred intent rather than preserved execution history, leading to logically plausible but non-executable outputs. This effect may be further amplified by VL2’s mixture-of-experts architecture, where dynamic expert routing can improve specialization for localized reasoning but introduces additional challenges in maintaining stable, long-horizon state consistency across generation steps. As a result, reasoning-centric and MoE-based upgrades can jointly benefit short-context understanding tasks while exacerbating failure modes in long-context, execution-sensitive generation.

- *Color Feature Presents Unique Challenges in Visual Decoding.* Color accuracy remains the lowest-scoring aspect within the Visual Structure Consistency metrics, even for top-performing models such as GPT-5 (51.21), Claude-4-5-Sonnet(49.44) and Qwen3-VL-32B-Instruct(38.51). This suggests that fine-grained color differentiation poses unique challenges for current visual encoders, especially in complex or low-contrast chart regions. In many cases, the visual abstraction processes used by these models may reduce sensitivity to precise pixel-level color features.

- *High Pass Rate but Low Fidelity.* Another failure mode is models generating syntactically valid outputs that “mask critical failures” in content. For example, in controlled chart-to-table task, DeepSeek-VL-7B successfully produces parsable code nearly every time ( about 98% pass rate) , yet its data extraction is almost nonexistent (strict F1 <1%). It often writes basic chart code that runs but does not capture the actual data or visual details. This strategy yields a high functional score but ex-

You are an AI assistant capable of understanding charts and quickly transforming chart information into Python plotting code. I have an image of a chart, and I would like you to use the `{library name}` library to recreate it. Please deduce or extract the data shown in the chart, accurately restore the chart type, axis labels, ranges, legend, title, color scheme, and other details. Only provide the complete, directly executable Python code for plotting, without any explanation or reasoning process.

Figure 6: Prompt for Chart-to-Code task. The orange text in curly braces denotes a selectable visualization library.

You are a vision-capable AI data analyst with expert-level proficiency in interpreting and estimating numerical data from visualized charts and graphs. Given an image of a chart and a list of column headers, your task is to reconstruct the underlying tabular data as accurately as possible by analyzing axis ticks, gridlines, data points, and other visual cues. You must always provide a complete table – do not skip values or omit estimates, even if some data points require approximation.

Return the result strictly as a JSON array of rows. Each row must be a JSON object where keys are the given column names and values are the corresponding data entries for that row. Maintain strict row-wise structure: the *n*th object in the array must represent the *n*th row of the table.

If a value is missing for a particular column in a given row, represent it as `None` to preserve alignment. If any column contains structured or multi-dimensional data, expand it into a flat table by outputting one row per value, each paired with its corresponding coordinate values. Use defined coordinate columns when available; otherwise, infer them visually from axis labels, tick marks, or gridlines to ensure alignment with meaningful chart-based positions.

Do not include any explanations, descriptions, or additional text – only return the JSON array.

Use the following structure as a reference:

```
```json
[
  { "ColumnName1": value1, "ColumnName2": value2, "ColumnName3": None },
  { "ColumnName1": value3, "ColumnName2": None, "ColumnName3": value4 },
  { "ColumnName1": value5, "ColumnName2": value6, "ColumnName3": value7 }
]
```

Now, I have provided a chart image, and the column headers are `{Column names list}`. Please output the table data in JSON format.

Figure 7: Prompt for Controlled Chart-to-Table task. The orange text represents placeholders, which varies according to different table headers.

1332	tremely low data fidelity, indicating the model is	value extraction despite visual complexity.	1383
1333	defaulting to trivial or placeholder outputs to avoid		
1334	errors rather than truly understanding the chart.		
1335	<i>A High CLIP Score Does Not Guarantee Accu-</i>	<b>E.5 Correlation with Human Evaluation</b>	1384
1336	<i>rate Data Reconstruction.</i> A model may gener-	To assess the extent to which our multi-level evalu-	1385
1337	ate a chart that is visually convincing—possessing	ation framework aligns with human judgments, we	1386
1338	the correct chart type, structure, and color distri-	conduct a human preference study based on pair-	1387
1339	bution—yet fails to preserve the underlying data.	wise comparisons in the chart-to-code generation	1388
1340	For instance, Claude-4.5-Sonnet achieves a high	task, which reduces annotator calibration bias and	1389
1341	CLIP score (78.93), yet its data fidelity (36.70) falls	enables more reliable assessment of relative quality	1390
1342	slightly below that of Qwen3-VL-235B (38.07), de-	differences than absolute scoring.	1391
1343	spite the latter having a significantly lower CLIP	<b>Data Sampling.</b> To ensure the evaluation ac-	1392
1344	score (68.62). This divergence illustrates that vi-	curely reflected the dataset’s diversity, we first	1393
1345	sual similarity and data accuracy are distinct dimen-	grouped the test set by chart type. We then per-	1394
1346	sions. As noted in the introduction, a model may	formed proportional random sampling within each	1395
1347	"reproduce a chart’s appearance while silently alter-	group to construct the final set of $N = 300$ pairs	1396
1348	ing the data." Consequently, CLIP scores and Data	from the ChartAnchor test set. The detail are il-	1397
1349	F1 metrics must be viewed as complementary: the	lustrated in table 11. For each pair $(C_A, C_B)$ ,	1398
1350	former detects visual discrepancies, while the latter	two different models generate executable plotting	1399
1351	reveals semantic errors. Both are indispensable for	code from the same ground-truth chart input, ensur-	1400
1352	a comprehensive evaluation of chart fidelity.	ing that any observed differences arise solely from	1401
1353		model behavior rather than input variation.	1402
1354	<b>E.4 Analysis Across Chart Types</b>	<b>Annotation Protocol.</b> We recruit domain experts	1403
1355	Figure 8 shows that overall model performance	with prior experience in data visualization and chart	1404
1356	varies significantly by chart type. Models perform	analysis as annotators. For each chart pair, annota-	1405
1357	best on simple 2D Cartesian charts like bar and	tors are presented with the reference chart image	1406
1358	line, which have consistent structures and are likely	together with the two rendered candidate charts.	1407
1359	well-represented in training data. In contrast, per-	Following the core dimensions of our evaluation	1408
1360	formance drops sharply on 3D, matrix-style, and	framework, annotators independently indicate their	1409
1361	hierarchical charts, which involve complex layouts	preference (“ <i>A is better</i> ” or “ <i>B is better</i> ”) along	1410
1362	or dense data encoding. Financial charts show mod-	three axes:	1411
1363	erate stability, likely due to their standardized for-		
1364	ats.	• <b>Visual Structure Consistency</b> , focusing on	1412
1365	Compared to data fidelity prediction (Figure 5),	chart type, layout, textual elements, and color	1413
1366	some differences emerge. For instance, pie charts	usage;	1414
1367	score high in data recovery but only moderately	• <b>Semantic Data Fidelity</b> , emphasizing numer-	1415
1368	in overall performance, suggesting structural ele-	ical accuracy and preservation of underlying	1416
1369	ments (e.g., legends) are hard to reproduce. Mean-	data relationships;	1417
1370	while, 3D and matrix charts perform worse in data	• <b>Perceptual Quality</b> , capturing overall visual	1418
1371	accuracy than in overall score, highlighting the	plausibility and semantic coherence.	1419
1372	difficulty of recovering exact values from visually		
1373	dense charts.	No ties are allowed, enforcing a strict preference	1420
1374	Figure 9 shows model performance on the chart-	decision for each dimension.	1421
1375	to-table task under slight tolerance. Basic Carte-		
1376	sian charts (e.g., bar, line) achieve the highest F1	<b>Agreement Metrics.</b> Rather than evaluating ab-	1422
1377	scores due to their clear value mappings. In con-	solute quality, this study focuses on relative ranking	1423
1378	trast, 3D, polar, and matrix-style charts perform	alignment. For each chart pair and evaluation di-	1424
1379	poorly across models, reflecting challenges from	dimension, we compare the chart preferred by human	1425
1380	visual distortion or dense layouts. Notably, hierar-	annotators with the chart assigned a higher score	1426
1381	chical charts (e.g., sunburst, treemap) perform bet-	by the corresponding automated metric. We re-	1427
1382	ter here than in data attribute prediction (Figure 5),	port Consistency Accuracy (Acc) as the fraction	1428
	suggesting that structured table formats help guide	of pairs for which the metric agrees with human	1429

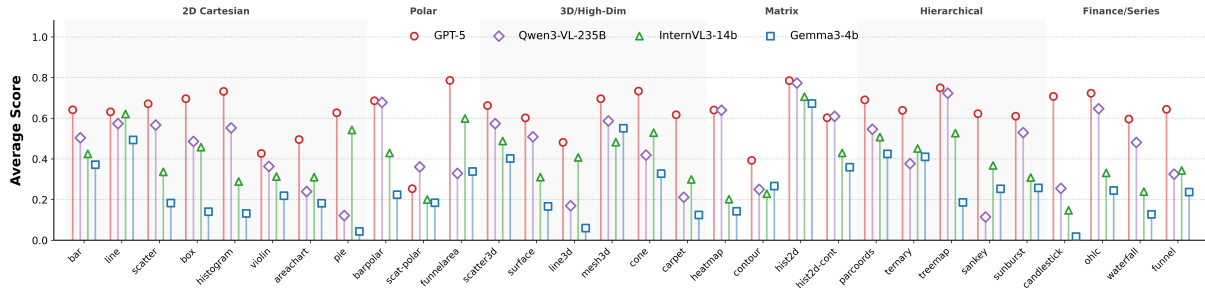


Figure 8: Comparison of Overall Across Chart Types for Different Models on Chart-to-Code Task

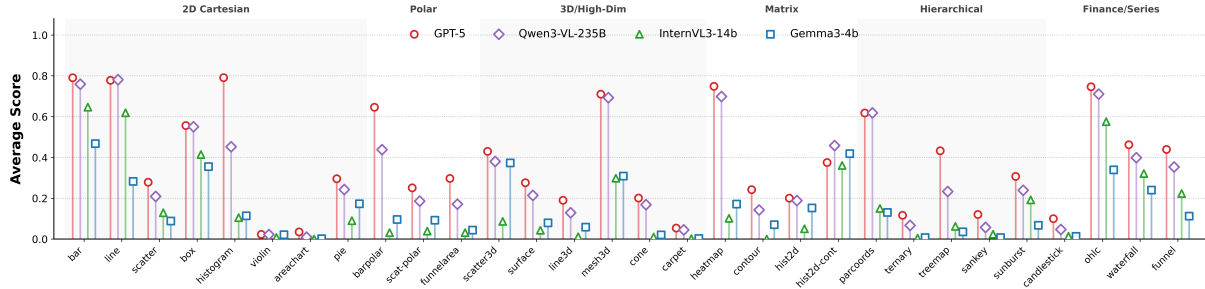


Figure 9: Comparison of Slight F1-Score Across Chart Types for Different Models on Controlled Chart-to-Table Task

1430 preference. In addition, we compute Kendall’s rank  
 1431 correlation coefficient ( $\tau$ ) to measure global agree-  
 1432 ment between metric-induced rankings and human  
 1433 preference orderings.

## 1434 F Case Study of ChartAnchor

1435 **Example 1:** Figure 10 illustrates the output of a  
 1436 Chart-to-Code task, comparing the gold reference  
 1437 image with the charts generated by three models:  
 1438 GPT-4o, Gemma3-4b, and InternVL3-14b. Among  
 1439 them, GPT-4o demonstrates the highest fidelity  
 1440 in visual styling, closely mimicking the original  
 1441 chart’s color fill, line smoothness, and overall aes-  
 1442 thetic. In contrast, InternVL3-14b more accurately  
 1443 captures the data trends and year-to-year fluctua-  
 1444 tions, reflecting the original curve’s structure with  
 1445 greater numerical precision.

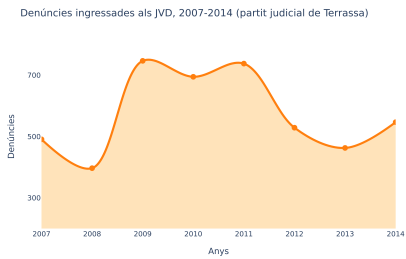
1446 **Example 2:** As shown in figure 11, GPT-4o of-  
 1447 fers the most faithful reproduction overall, closely  
 1448 matching the original chart’s data values and  
 1449 bar patterns, including the distinctive crosshatch  
 1450 fill—though it uses a dark background instead of  
 1451 light. In contrast, both Gemma3-4b and InternVL3-  
 1452 14b lack the patterned bars and display fewer, less  
 1453 precise data points, resulting in lower fidelity in  
 1454 both appearance and accuracy. While all models  
 1455 preserve the general upward trend, GPT-4o stands  
 1456 out for its high consistency in both visual styling  
 1457 and numerical detail.

1458 **Example 3:** As shown in figure 12, in this ex-  
 1459 ample, GPT-4o is the only model that successfully  
 1460 replicates the candlestick chart structure from the  
 1461 gold image, preserving both the visual format and  
 1462 financial data elements. InternVL3-14b fails to pro-  
 1463 duce a candlestick chart, instead outputting a mis-  
 1464 leading bar chart with incorrect trends. Gemma3-  
 1465 4b completely fails to render a valid image, as in-  
 1466 dicated by the gray placeholder.

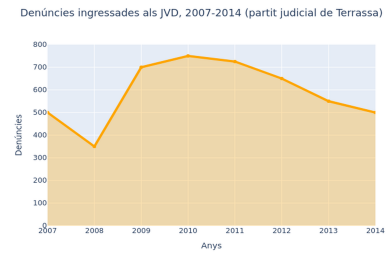
1467 **Example 4:** As shown in figure 13, in this ex-  
 1468 ample, Claude-3-7-Sonnet is the closest to replicat-  
 1469 ing the contour style of the gold image, correctly  
 1470 preserving the shape and gradient regions, though  
 1471 with reduced detail. GPT-4o fails to generate  
 1472 contours, instead producing a simplified heatmap  
 1473 with horizontal bands that ignore spatial gradients.  
 1474 InternVL3-14b fails entirely, indicated by the gray  
 1475 placeholder.

1476 **Example 5:** As shown in figure 14, only Claude-  
 1477 3-7-Sonnet successfully generates valid funnelarea  
 1478 charts, although the layout differs from the original:  
 1479 rearranges their positions. GPT-4o and InternVL3-  
 1480 14b both fail to render any output, shown as gray  
 1481 placeholders. While Claude’s version lacks stylistic  
 1482 fidelity, it maintains correct data values and  
 1483 category separation.

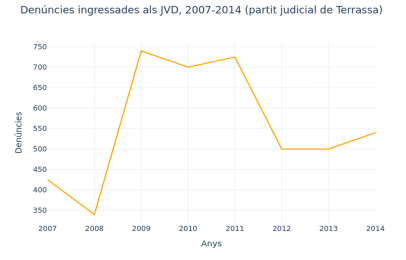
1484 **Example 6:** As shown in figure 15, GPT-4o is  
 1485 the only model that successfully reproduces the  
 1486 heatmap format of the gold image, including the



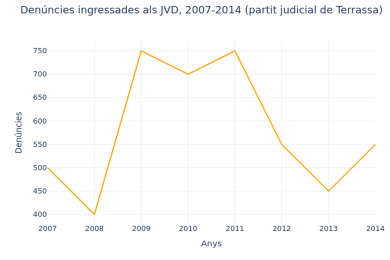
(a) Gold Image



(b) GPT4-o

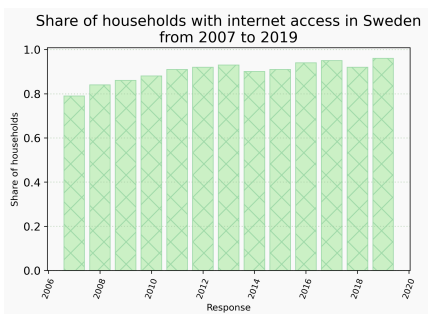


(c) Gemma3-4b

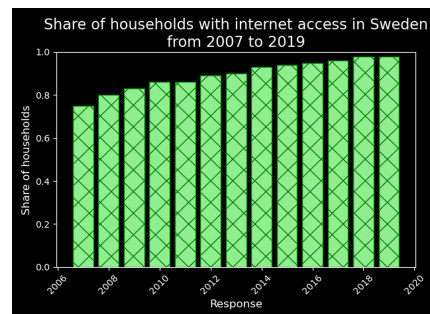


(d) InternVL3-14b

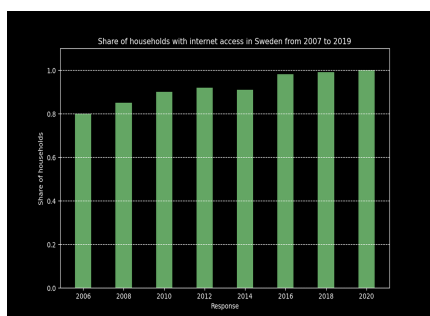
Figure 10: Image Example1 for Chart-to-Code Task.



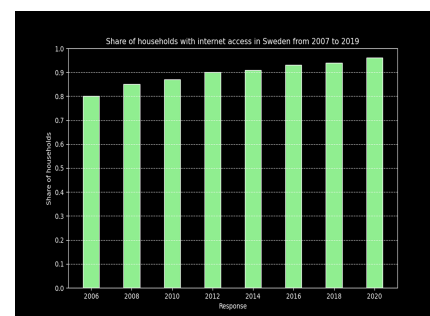
(a) Gold Image



(b) GPT4-o



(c) Gemma3-4b



(d) InternVL3-14b

Figure 11: Image Example2 for Chart-to-Code Task.

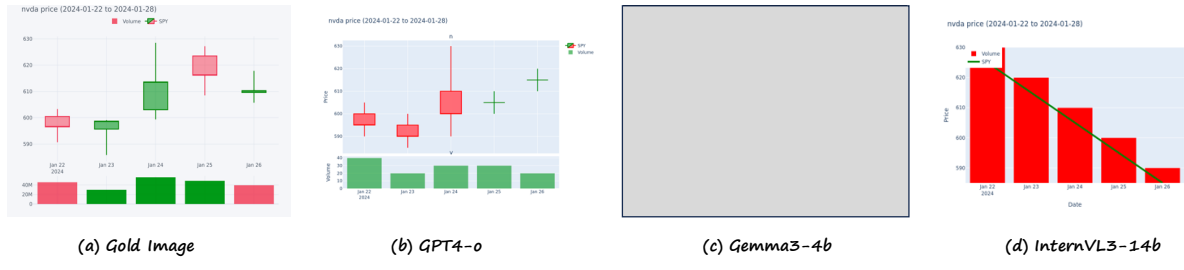


Figure 12: Image Example3 for Chart-to-Code Task. The gray image indicates that the model did not generate a valid image or the code parsing failed

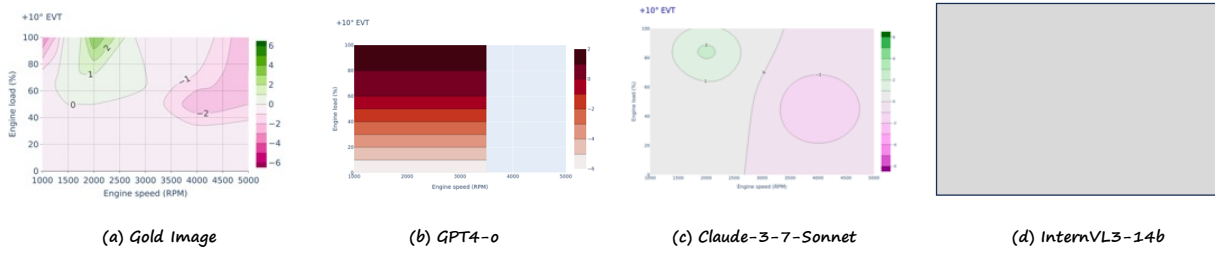


Figure 13: Image Example4 for Chart-to-Code Task. The gray image indicates that the model did not generate a valid image or the code parsing failed

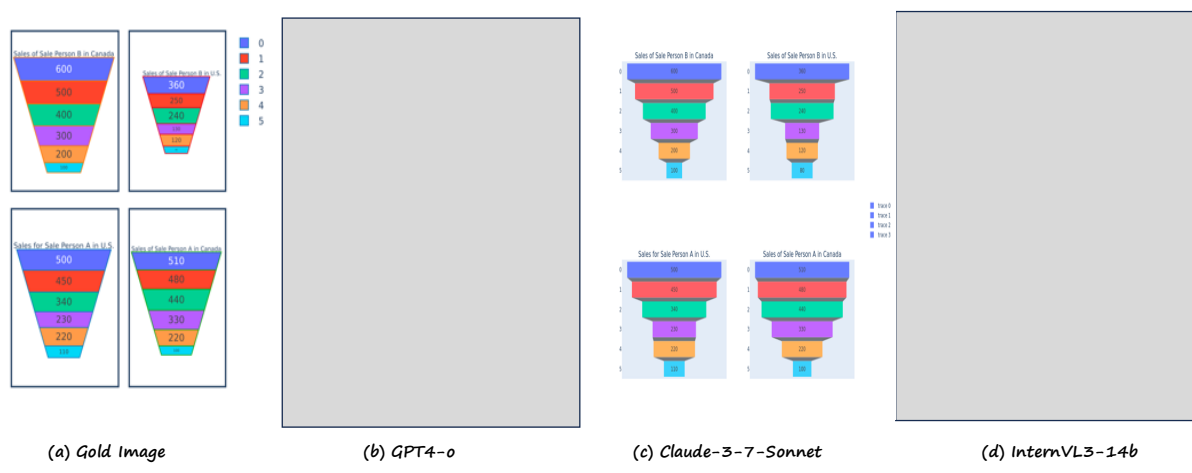


Figure 14: Image Example5 for Chart-to-Code Task. The gray image indicates that the model did not generate a valid image or the code parsing failed

Type Num	Scatterpolar 24	Scatter3d 8	Line3d 2	Pie 26	Barpolar 13	Mesh3d 4	Violin 8	Line 23	Histogram2d 6	Bar 24
Type Num	Box 16	Scatterternary 5	Waterfall 4	Heatmap 14	Scatter 25	Cone 2	Surface 3	Histogram 18	Carpet 1	Treemap 4
Type Num	Parcoords 3	Funnelarea 4	Funnel 7	Sankey 9	Candlestick 4	Contour 9	Sunburst 11	Histogram2dcontour 5	Areachart 16	Ohlc 2

Table 11: Exact distribution of chart types in the human evaluation set.

layout of cities and categories. While the color mapping is slightly off, the structural format is well preserved. Gemma3-4b and InternVL3-14b both deviate significantly by converting the data into grouped bar charts. Although their bar heights roughly reflect the underlying values, they lose the compact matrix layout and visual impact of the original.

**Example 7:** As shown in figure 16, all models correctly reproduce a pie chart with the same numerical values as the gold image. GPT-4o and InternVL3-14b maintain both the correct labels and proportions, although GPT-4o’s layout is elliptical rather than circular. Gemma3-4b also retains the right proportions but uses a completely different color scheme and label placement. Overall, GPT-4o and InternVL3-14b achieve high fidelity, while Gemma3-4b is accurate in data but less faithful in appearance.

**Example 8:** From figure 17, we can see, InternVL3-14b is the closest to the gold image, successfully generating both the box-and-whisker plot and the dot plot with a similar layout, color scheme, and annotated sample. GPT-4o captures only the dot plot and omits the box plot entirely, resulting in partial fidelity. Gemma3-4b fails to render any output, as shown by the gray placeholder. While InternVL3-14b slightly alters the orientation and spacing, it delivers the most accurate visual and structural reproduction overall.

**Example 9:** From the gold table (Table 12) and the generated tables (Figure 18), by comparing the row structures and numeric alignments, we observe that claude-3-7-Sonnet produces a table closely aligned with the gold table, with all values either correct or slightly off. Qwen2.5-VL-7B shows noticeable deviations in the "RDS 18–49" and "RDS Total" columns for 2014 and 2016. Qwen2.5-VL-32B gets closer but still introduces uniform values in 2015 that deviate from the gold data. Claude-3-7-Sonnet demonstrates the highest data fidelity and variation consistency across rows.

**Example 10:** From the gold table (Table 13) and

Table 12: Example 9: Gold Table

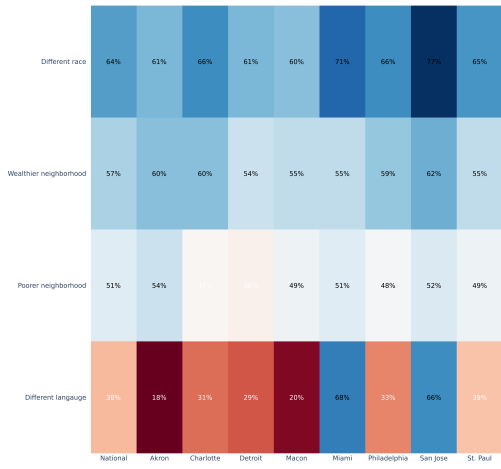
Year	RDS 18_49	RDS Total	TSN 18_49	TSN Total
2014	58,000	191,000	209,000	660,000
2015	63,000	201,000	157,000	535,000
2016	41,000	142,000	170,000	553,000

theta	Today-r	Mean-r
AL29	66.87	44.09
AL30	76.31	40.65
AE38	26.49	39.08
AL41	43.25	50.65
AL35	40.96	45.12
GD29	56.15	44.77
GD30	51.42	43.54
GD38	6.06	46.96
GD41	25.54	51.53
GD35	26.17	41.69

Table 13: Example 10: Gold Table

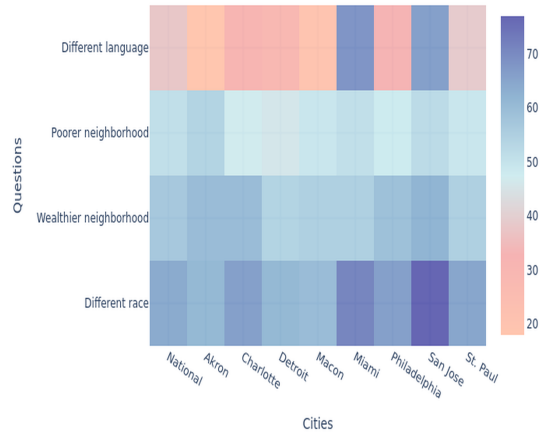
the generated tables (Figure 19), we can see, in this example, Claude-3-7-Sonnet is the only model that correctly identifies the categorical theta labels (e.g., AL29, GD35) and extracts reasonable numerical values for both "Today-r" and "Mean-r," achieving the highest alignment with the gold table. In contrast, Qwen2.5-VL-7B and Qwen2.5-VL-32B fail to capture the label names and instead generate numerical theta angles, indicating a misunderstanding of the scatterpolar chart structure. Their values also significantly diverge from the reference data, limiting their usability for structured analysis.

**Example 11:** From the gold table (Table 14) and the generated tables (Figure 20), we can see, Claude-3-7-Sonnet is the only model that accurately captures both the structure and values of the gold table. It correctly identifies incremental changes (including positive and negative values) and matches the final "Price current" result. In contrast, Qwen2.5-VL-7B and Qwen2.5-VL-32B misinterpret the chart as cumulative values rather than stepwise deltas. As a result, their tables lose



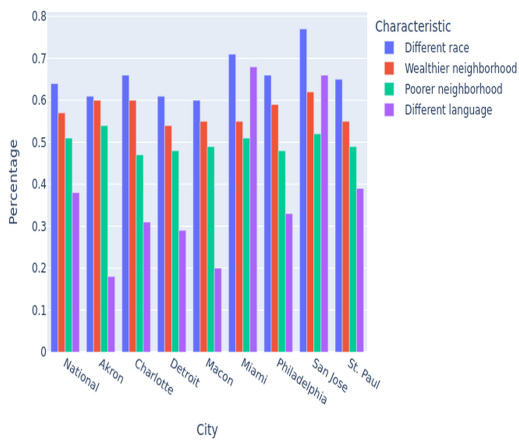
(a) Gold Image

Survey Data across Cities



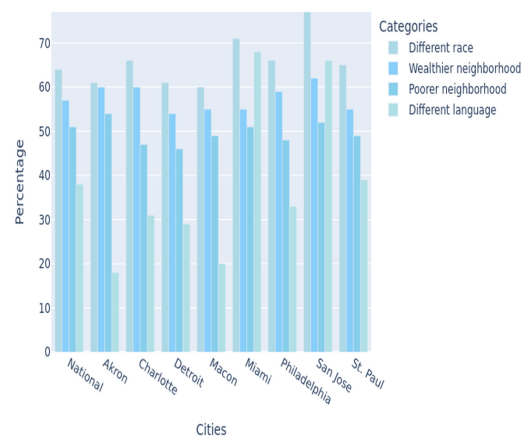
(b) GPT4-o

Neighborhood Characteristics



(c) Gemma3-4b

Comparison of Demographic Factors Across Cities



(d) InternVL3-14b

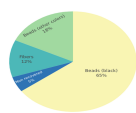
Figure 15: Image Example6 for Chart-to-Code Task.

Microplastics recovered by NaCl separation



(a) Gold Image

Microplastics recovered by NaCl separation



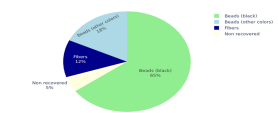
(b) GPT-4o

Microplastics recovered by NaCl separation



(c) Gemma3-4b

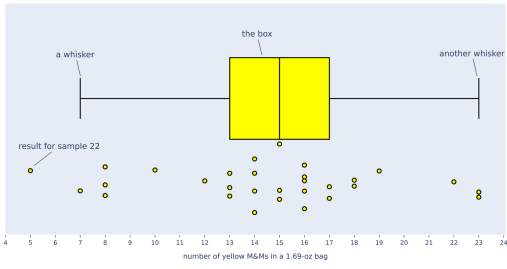
Microplastics recovered by NaCl separation



(d) InternVL3-14b

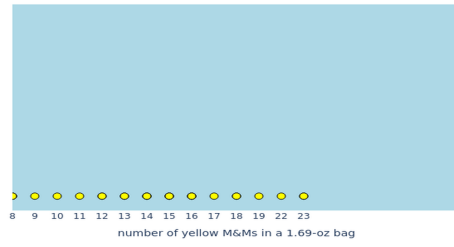
Figure 16: Image Example7 for Chart-to-Code Task. Each subfigure shows the output from a different model.

Figure 1: Box and Whisker Plot and Dot Plot for Yellow M&Ms



(a) Gold Image

Figure 1: Box and Whisker Plot and Dot Plot for Yellow M&Ms

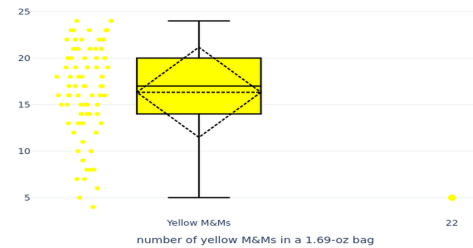


(b) GPT4-o



(c) Gemma3-4b

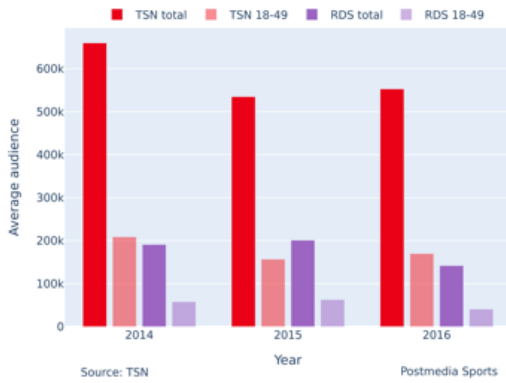
Figure 1: Box and Whisker Plot and Dot Plot for Yellow M&Ms



(d) InternVL3-14b

Figure 17: Image Example8 for Chart-to-Code Task. The gray image indicates that the model did not generate a valid image or the code parsing failed.

CFL on TSN: Average audience, 2014-16



Year	RDS 18-49	RDS Total	TSN 18-49	TSN Total
2014	58,000	190,000	205,000	650,000
2015	63,000	200,000	160,000	530,000
2016	42,000	140,000	170,000	550,000

*Claude-3-7-Sonnet*

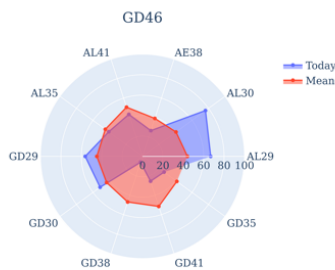
Year	RDS 18-49	RDS Total	TSN 18-49	TSN Total
2014	50,000	180,000	200,000	650,000
2015	60,000	200,000	160,000	530,000
2016	30,000	140,000	170,000	550,000

*Qwen2.5-VL-7B*

Year	RDS 18-49	RDS Total	TSN 18-49	TSN Total
2014	60,000	200,000	200,000	650,000
2015	60,000	200,000	160,000	530,000
2016	40,000	140,000	170,000	550,000

*Qwen2.5-VL-32B*

Figure 18: Example9. Gold Image and Generated Tables for Controlled Chart-to-Table Task.



theta	Today-r	Mean-r
AL30	90	60
AL29	95	70
GD35	65	55
GD41	50	60
GD38	40	65
GD30	55	70
GD29	70	50
AL35	60	65
AL41	65	75
AE38	55	60

*Claude-3-7-Sonnet*

theta	Today-r	Mean-r
30	80	40
20	60	40
10	40	20
10	20	20
20	40	40
30	60	40
30	80	40

*Qwen2.5-VL-7B*

theta	Today-r	Mean-r
0	60	50
60	50	40
120	40	30
180	30	40
240	40	50
300	50	60

*Qwen2.5-VL-32B*

Figure 19: Example10. Gold Image and Generated Tables for Controlled Chart-to-Table Task.

the core logic of a waterfall breakdown and deviate significantly from the reference.

trace0-x	trace0-y
Price previous year	200,000.0
Quantity difference	-10,000.0
Currency impact	-10,000.0
Market impact	15,000.0
Price reduction	-10,000.0
Not controlled	-25,000.0
Price current	100,000.0

Table 14: Example 11: Gold Table

### G Chart Examples

This section presents visual examples of the chart categories included in our benchmark. Each image illustrates a distinct chart type, showcasing the diversity in structure, data encoding, and visual design. Figures 21 and Figures 22 display representative samples from all 30 categories.

### H Volunteer Recruitment and Payment

All annotations were completed by five student volunteers from our institution. Given the light workload of the annotation task, participation was voluntary and uncompensated. All five annotators were graduate student members of our research group, and the annotation work was conducted as part of routine academic research collaboration within the group. Before participating, all annotators were fully informed of the research objectives, the content of the annotation tasks, the expected time commitment, and the intended use and publication of the annotated data. Participation was entirely voluntary, and annotators were free to withdraw at any time without any adverse consequences for their academic progress or research standing.

We further ensured that annotators’ identities would remain anonymous in all public materials; the annotation tasks involved only non-sensitive, publicly available data; no personal information was collected from the annotators; and the work involved no intervention in their personal lives. Because the study involved only standard data processing of non-sensitive public data and did not include any intervention in participants’ personal lives, formal approval from an Institutional Review Board (IRB) was not sought.

### I Data Consent

All data used in this work are publicly accessible and freely downloadable from their respective websites.

### J AI Assistance Disclosure

AI assistants were used solely for editorial assistance, including grammar and wording refinement, with all substantive content authored and reviewed by the authors.

### K Data Screening and Privacy Protection

We verified that all datasets used in this work are publicly available and do not contain personally identifiable information or offensive content. As the data are sourced from curated public repositories and websites, no additional anonymization or filtering was required.

### L Data Provenance and Licensing

#### L.1 Data Sources and Original Licenses

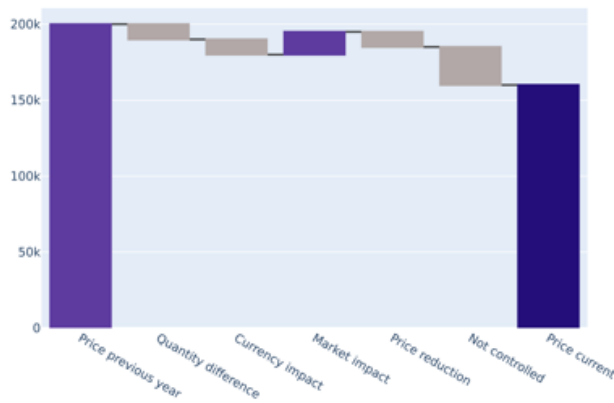
Table 15 summarizes the specific platforms, URLs, collection time windows, and original licenses of our data sources.

#### L.2 Details on Newly Curated Plotly Data

Our newly curated subset was collected exclusively from Plotly Chart Studio and its public API. The collection process was completed in **May 2025**. We strictly filtered our collection to include only charts that were explicitly marked as publicly shared by their creators. At the time of collection, accessing and aggregating these public charts was fully consistent with the platform’s open API guidelines and terms of use. Please note that Plotly Chart Studio underwent a service update in **October 2025**, which occurred after our data collection was concluded. We confirm that our data originates entirely from user-public content available prior to this update and does not contain any private, restricted, or post-update proprietary material.

#### L.3 Redistribution Arrangements

To ensure downstream compliance with all source constraints, we will release our combined dataset under GPL-3.0 with a Non-Commercial clause, or alternatively, the CC BY-NC-SA 4.0 license.



trace0-x	trace0-y
Price previous year	200000
Quantity difference	-15000
Currency impact	-20000
Market impact	30000
Price reduction	-15000
Not controlled	-30000
Price current	150000

**Claude-3-7-Sonnet**

trace0-x	trace0-y
Price previous year	200000
Quantity difference	190000
Currency impact	180000
Market impact	190000
Price reduction	180000
Not controlled	170000
Price current	160000

trace0-x	trace0-y
Price previous year	200,000
Quantity difference	190,000
Currency impact	180,000
Market impact	195,000
Price reduction	190,000
Not controlled	170,000
Price current	160,000

**Qwen2.5-VL-7B**

**Qwen2.5-VL-32B**

Figure 20: Example11. Gold Image and Generated Tables for Controlled Chart-to-Table Task.

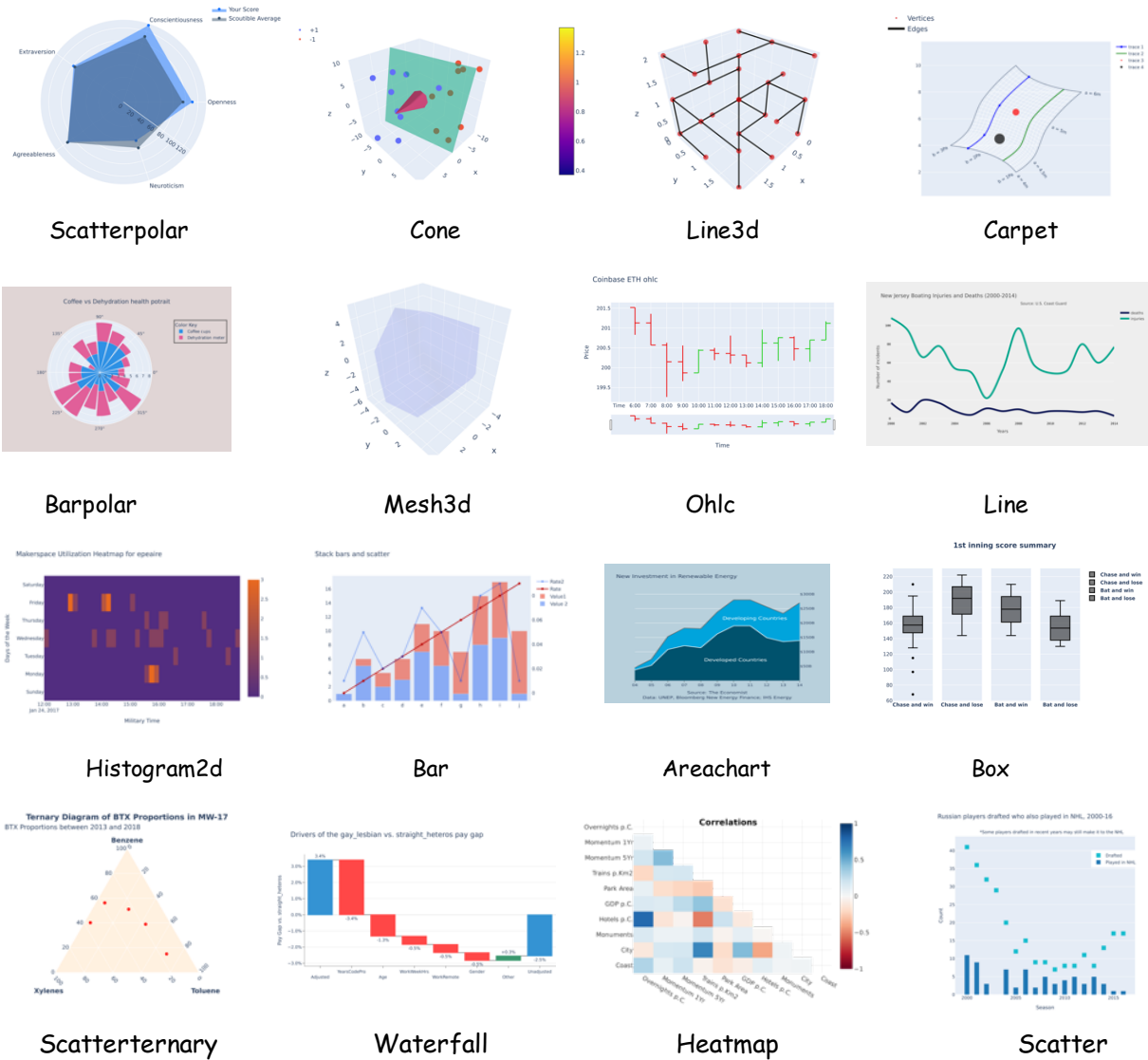


Figure 21: Representative chart images in our benchmark.

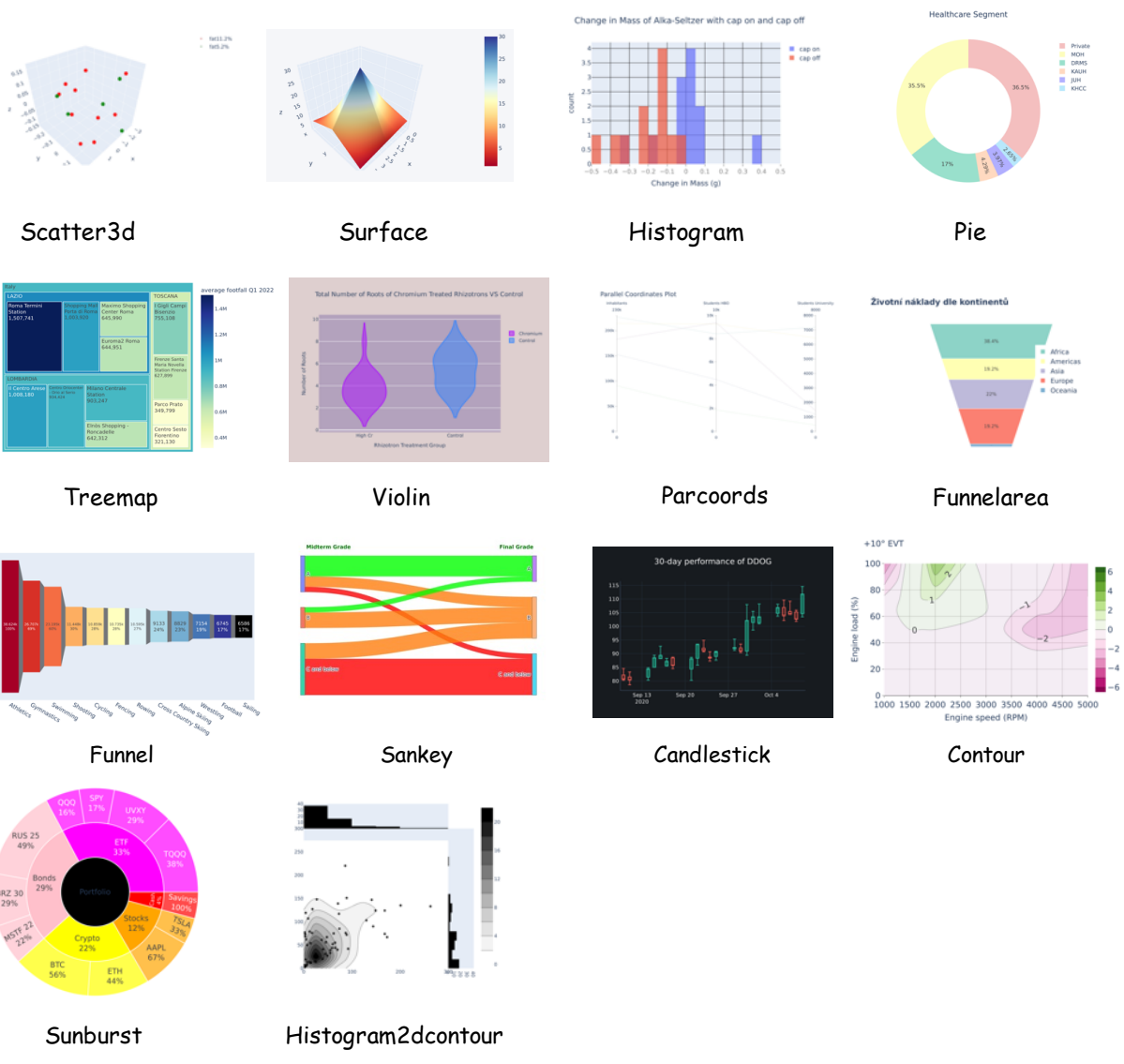


Figure 22: Representative chart images in our benchmark.

<b>Data Source</b>	<b>Platform / URL</b>	<b>Collection Window</b>	<b>Original License / Terms</b>
PlotQA	<a href="https://github.com/NiteshMethani/PlotQA">https://github.com/NiteshMethani/PlotQA</a>	Pre-existing	CC-BY-4.0
FigureQA	<a href="https://github.com/Maluuba/FigureQA">https://github.com/Maluuba/FigureQA</a>	Pre-existing	MIT License
DVQA	<a href="https://github.com/kushalkafle/DVQA_dataset">https://github.com/kushalkafle/DVQA_dataset</a>	Pre-existing	CC BY-NC 4.0
VisText	<a href="https://github.com/mitvis/vistext">https://github.com/mitvis/vistext</a>	Pre-existing	GPL-3.0
Plotly Chart Studio	<a href="https://chart-studio.plotly.com/">https://chart-studio.plotly.com/</a>	Jan 2025 – May 2025	Publicly Shared

Table 15: Summary of Data Sources and Original Licenses